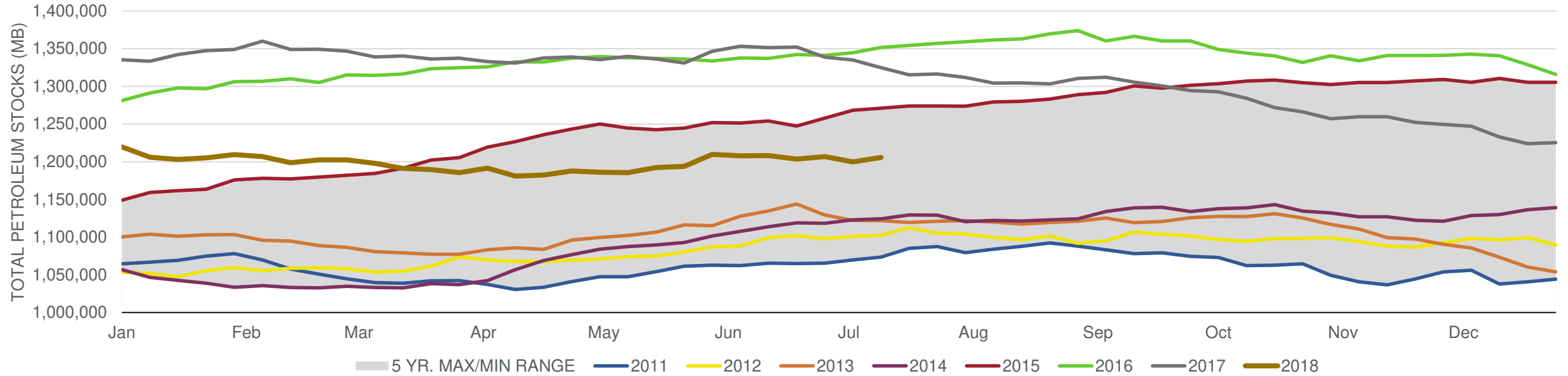


## EIA Weekly Petroleum Status Report

Week Ending: 7/13/2018

Total Stocks: **6,003 Mb** Crude Oil Stocks (excl. SPR): **5,836 Mb** Production: **100 Mbd**

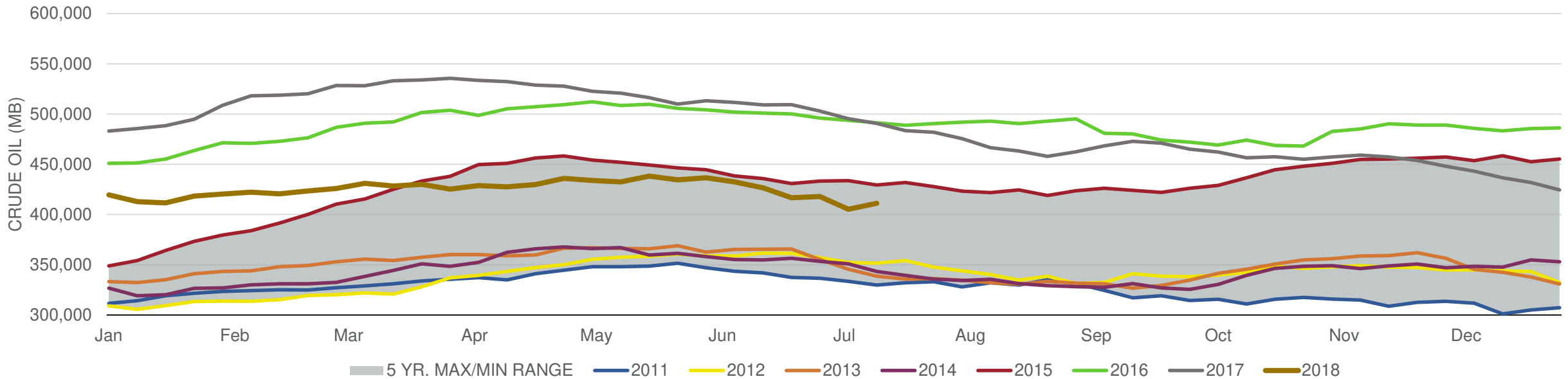
### Total Petroleum Stocks



Week Ending	WTI	Change	GC Gaso	Change	NY No 2	Change	Crude	Change	Gasoline	Change	Distillate	Change	Kero	Change	Resid	Change	Total Stocks	Change
6/15/2018	\$65.35	(\$1.80)	\$2.01	(\$0.01)	\$2.13	\$0.01	426,527	(5,914)	240,040	3,277	117,408	2,715	41,761	(986)	31,623	820	1,208,163	192
6/22/2018	\$66.21	\$0.86	\$1.94	(\$0.07)	\$2.07	(\$0.06)	416,636	(9,891)	241,196	1,156	117,423	15	41,944	183	31,193	(430)	1,203,603	(4,560)
6/29/2018	\$66.32	\$0.12	\$2.01	\$0.06	\$2.11	\$0.04	417,881	1,245	239,691	(1,505)	117,557	134	40,965	(979)	29,646	(1,547)	1,206,904	3,301
7/6/2018	\$74.03	\$7.70	\$2.06	\$0.06	\$2.14	\$0.04	405,248	(12,633)	238,997	(694)	121,682	4,125	40,269	(696)	27,733	(1,913)	1,199,733	(7,171)
7/13/2018	\$73.73	(\$0.30)	\$2.06	(\$0.01)	\$2.13	(\$0.02)	411,084	5,836	235,832	(3,165)	121,311	(371)	40,768	499	28,076	343	1,205,736	6,003

Total Stocks: **6,003 Mb** Crude Oil Stocks (excl. SPR): **5,836 Mb** Production: **100 Mbd**

**Commercial Crude Oil Stocks**



Week Ending	WTI	Change	Production	Change	Imports	Change	Exports	Change	Capacity	Inputs	Change	Utilization	Crude Oil Stocks	Change
6/15/2018	\$65.35	(\$1.80)	10,900	0	8,242	143	2374	344	18,125	17,701	196	96.7%	426,527	(5,914)
6/22/2018	\$66.21	\$0.86	10,900	0	8,356	114	3000	626	18,125	17,816	115	97.5%	416,636	(9,891)
6/29/2018	\$66.32	\$0.12	10,900	0	9,055	699	2336	(664)	18,125	17,653	(163)	97.1%	417,881	1,245
7/6/2018	\$74.03	\$7.70	10,900	0	7,431	(1,624)	2027	(309)	18,125	17,652	(1)	96.7%	405,248	(12,633)
7/13/2018	\$73.73	(\$0.30)	11,000	100	9,066	1,635	1461	(566)	18,125	17,239	(413)	94.3%	411,084	5,836