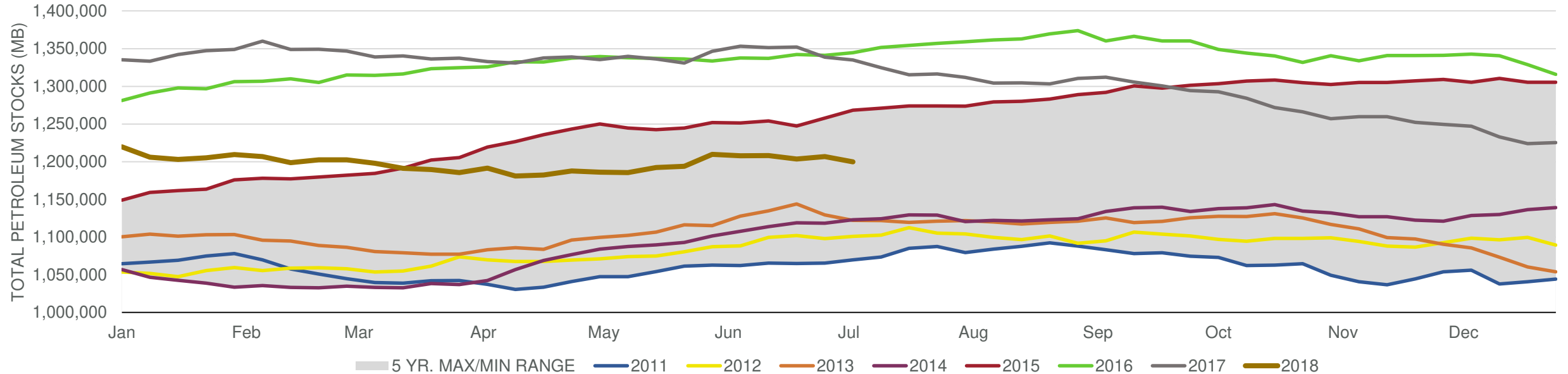


EIA Weekly Petroleum Status Report

Week Ending: 7/6/2018

Total Stocks: **-7,171 Mb** Crude Oil Stocks (excl. SPR): **-12,633 Mb** Production: **0 Mbd**

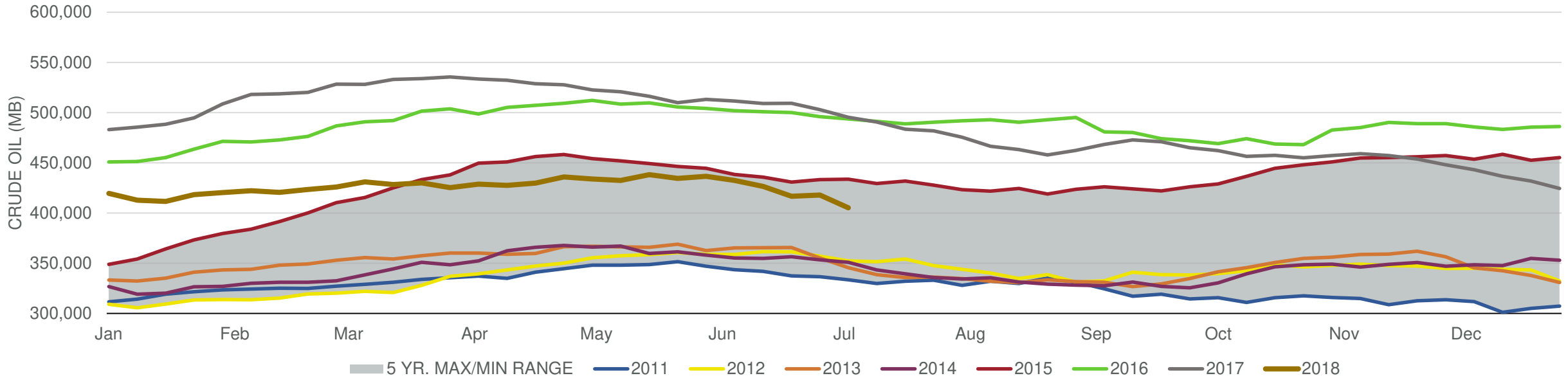
Total Petroleum Stocks



Week Ending	WTI	Change	GC Gaso	Change	NY No 2	Change	Crude	Change	Gasoline	Change	Distillate	Change	Kero	Change	Resid	Change	Total Stocks	Change
6/8/2018	\$65.35	(\$1.80)	\$2.02	(\$0.05)	\$2.12	(\$0.05)	432,441	(4,143)	236,763	(2,271)	114,693	(2,101)	42,747	1,817	30,803	(1,425)	1,207,971	(1,790)
6/15/2018	\$66.21	\$0.86	\$1.99	(\$0.02)	\$2.12	(\$0.00)	426,527	(5,914)	240,040	3,277	117,408	2,715	41,761	(986)	31,623	820	1,208,163	192
6/22/2018	\$66.32	\$0.12	\$1.96	(\$0.04)	\$2.08	(\$0.04)	416,636	(9,891)	241,196	1,156	117,423	15	41,944	183	31,193	(430)	1,203,603	(4,560)
6/29/2018	\$74.03	\$7.70	\$2.01	\$0.05	\$2.12	\$0.04	417,881	1,245	239,691	(1,505)	117,557	134	40,965	(979)	29,646	(1,547)	1,206,904	3,301
7/6/2018	\$73.73	(\$0.30)	\$2.06	\$0.06	\$2.14	\$0.01	405,248	(12,633)	238,997	(694)	121,682	4,125	40,269	(696)	27,733	(1,913)	1,199,733	(7,171)

Total Stocks: **-7,171 Mb** Crude Oil Stocks (excl. SPR): **-12,633 Mb** Production: **0 Mbd**

Commercial Crude Oil Stocks



Week Ending	WTI	Change	Production	Change	Imports	Change	Exports	Change	Capacity	Inputs	Change	Utilization	Crude Oil Stocks	Change
6/8/2018	\$65.35	(\$1.80)	10,900	100	8,099	(247)	2030	316	18,125	17,505	136	95.7%	432,441	(4,143)
6/15/2018	\$66.21	\$0.86	10,900	0	8,242	143	2374	344	18,125	17,701	196	96.7%	426,527	(5,914)
6/22/2018	\$66.32	\$0.12	10,900	0	8,356	114	3000	626	18,125	17,816	115	97.5%	416,636	(9,891)
6/29/2018	\$74.03	\$7.70	10,900	0	9,055	699	2336	(664)	18,125	17,653	(163)	97.1%	417,881	1,245
7/6/2018	\$73.73	(\$0.30)	10,900	0	7,431	(1,624)	2027	(309)	18,125	17,652	(1)	96.7%	405,248	(12,633)