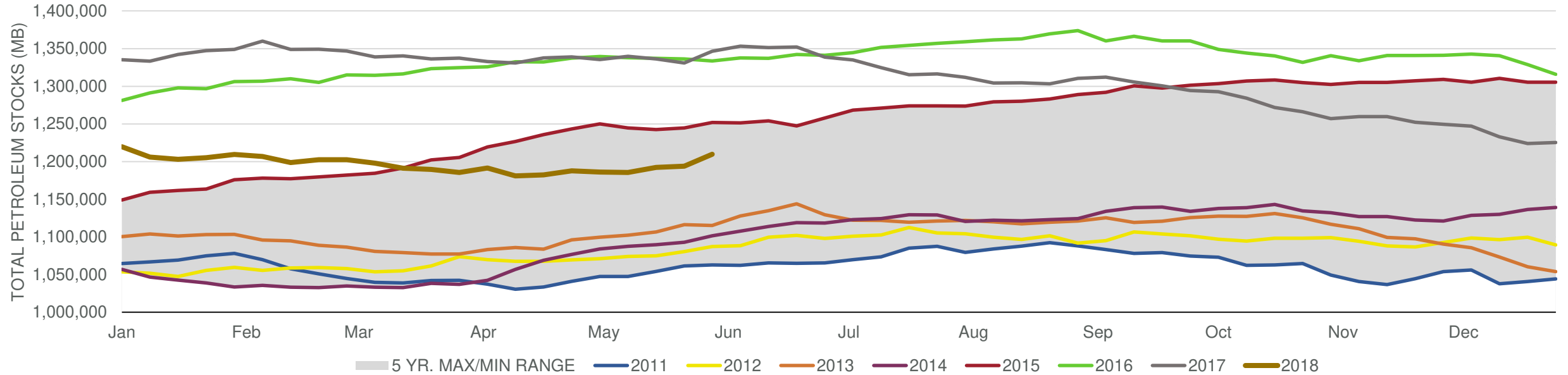


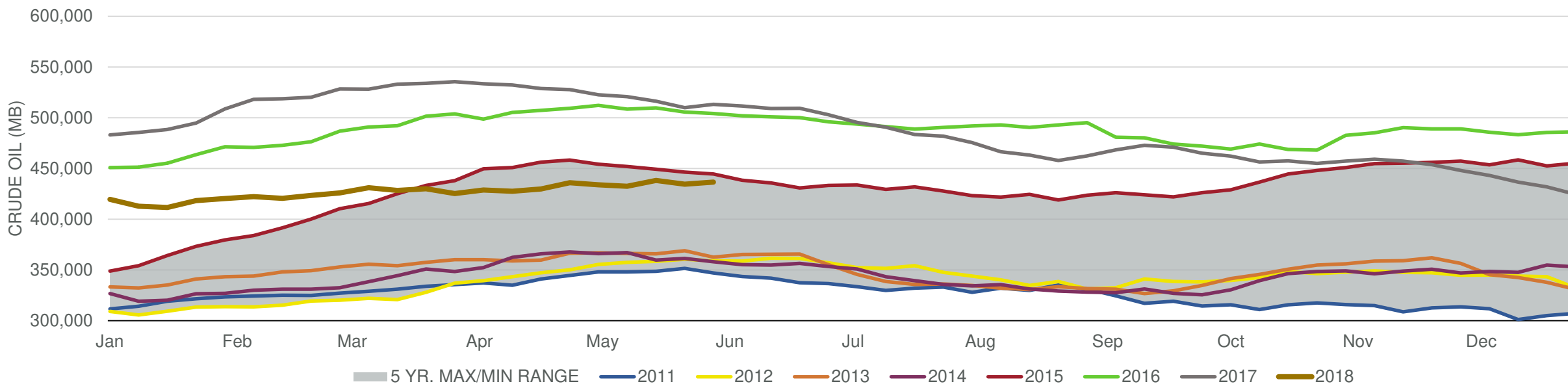
Total Stocks: **15,756 Mb** Crude Oil Stocks (excl. SPR): **2,072 Mb** Production: **31 Mbd**

Total Petroleum Stocks



Week Ending	WTI	Change	GC Gaso	Change	NY No 2	Change	Crude	Change	Gasol	Change	Distillate	Change	Kero	Change	Resid	Change	Total Stocks	Change
5/4/2018	\$68.06	\$0.12	\$2.03	\$0.00	\$2.10	(\$0.00)	433,758	(2,197)	235,804	(2,174)	115,038	(3,791)	40,750	997	32,921	33	1,186,178	(1,547)
5/11/2018	\$70.36	\$2.30	\$2.06	\$0.03	\$2.16	\$0.06	432,354	(1,404)	232,014	(3,790)	114,946	(92)	41,267	517	32,790	(131)	1,185,519	(659)
5/18/2018	\$71.19	\$0.83	\$2.13	\$0.07	\$2.23	\$0.06	438,132	5,778	233,897	1,883	113,995	(951)	40,556	(711)	30,949	(1,841)	1,192,250	6,731
5/25/2018	\$71.64	\$0.45	\$2.16	\$0.03	\$2.25	\$0.02	434,512	(3,620)	234,431	534	114,629	634	40,201	(355)	32,504	1,555	1,194,005	1,755
6/1/2018	\$67.15	(\$4.49)	\$2.09	(\$0.07)	\$2.17	(\$0.08)	436,584	2,072	239,034	4,603	116,794	2,165	40,930	729	32,228	(276)	1,209,761	15,756

Commercial Crude Oil Stocks



Week Ending	WTI	Change	Production	Change	Imports	Change	Exports	Change	Capacity	Inputs	Change	Utilization	Crude Oil Stocks	Change
5/4/2018	\$68.06	\$0.12	10,703	84	7,323	(1,226)	1877	(271)	18,125	16,486	(75)	90.4%	433,758	(2,197)
5/11/2018	\$70.36	\$2.30	10,723	20	7,601	278	2566	689	18,125	16,635	149	91.1%	432,354	(1,404)
5/18/2018	\$71.19	\$0.83	10,725	2	8,159	558	1748	(818)	18,125	16,628	(7)	91.8%	438,132	5,778
5/25/2018	\$71.64	\$0.45	10,769	44	7,631	(528)	2179	431	18,125	17,155	527	93.9%	434,512	(3,620)
6/1/2018	\$67.15	(\$4.49)	10,800	31	8,346	715	1714	(465)	18,125	17,369	214	95.4%	436,584	2,072