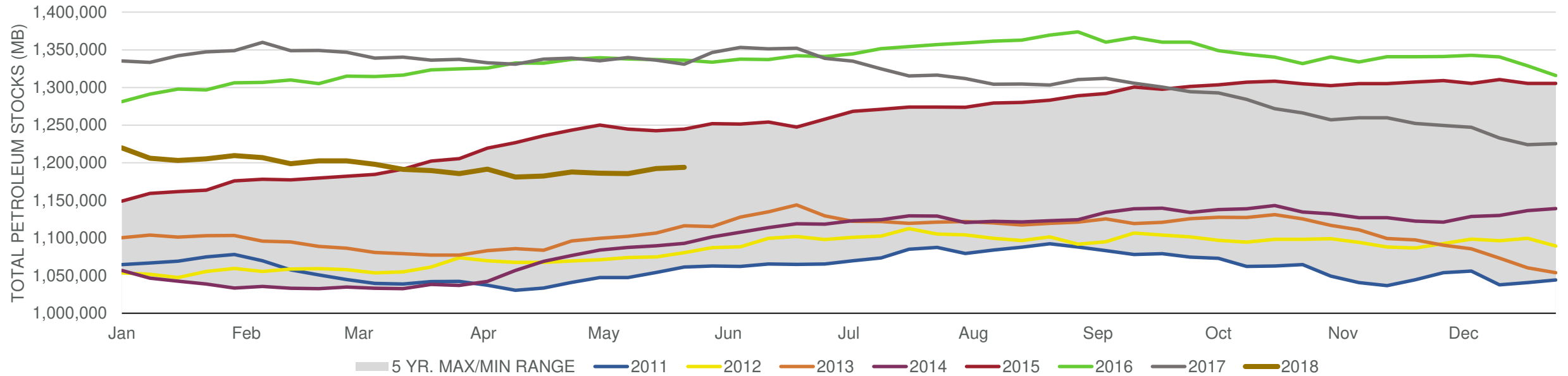


EIA Weekly Petroleum Status Report

Week Ending: 5/25/2018

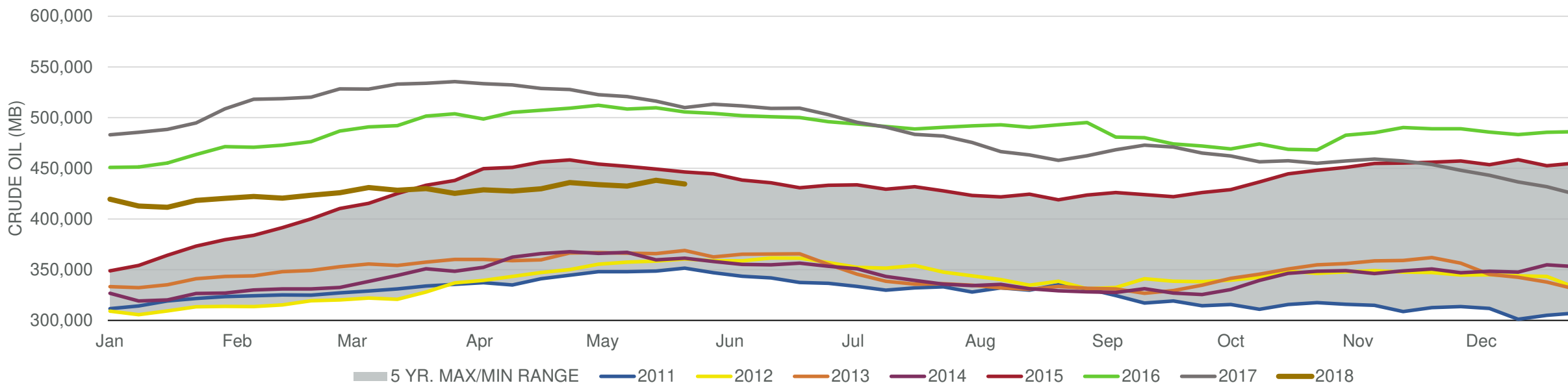
Total Stocks: **1,755 Mb** Crude Oil Stocks (excl. SPR): **3,620 Mb** Production: **44 Mbd**

Total Petroleum Stocks



Week Ending	WTI	Change	GC Gaso	Change	NY No 2	Change	Crude	Change	Gaso	Change	Distillate	Change	Kero	Change	Resid	Change	Total Stocks	Change
4/27/2018	\$67.91	\$0.37	\$2.03	\$0.04	\$2.10	\$0.04	435,955	6,218	237,978	1,171	118,829	(3,900)	39,753	471	32,888	(85)	1,187,725	5,364
5/4/2018	\$68.38	\$0.47	\$2.02	(\$0.01)	\$2.10	\$0.00	433,758	(2,197)	235,804	(2,174)	115,038	(3,791)	40,750	997	32,921	33	1,186,178	(1,547)
5/11/2018	\$70.56	\$2.17	\$2.07	\$0.05	\$2.18	\$0.07	432,354	(1,404)	232,014	(3,790)	114,946	(92)	41,267	517	32,790	(131)	1,185,519	(659)
5/18/2018	\$71.30	\$0.74	\$2.13	\$0.06	\$2.23	\$0.06	438,132	5,778	233,897	1,883	113,995	(951)	40,556	(711)	30,949	(1,841)	1,192,250	6,731
5/25/2018	\$70.98	(\$0.32)	\$2.15	\$0.02	\$2.23	(\$0.00)	434,512	(3,620)	234,431	534	114,629	634	40,201	(355)	32,504	1,555	1,194,005	1,755

Commercial Crude Oil Stocks



Week Ending	WTI	Change	Production	Change	Imports	Change	Exports	Change	Capacity	Inputs	Change	Utilization	Crude Oil Stocks	Change
4/27/2018	\$67.91	\$0.37	10,619	33	8,549	80	2148	(183)	18,125	16,561	(60)	91.1%	435,955	6,218
5/4/2018	\$68.38	\$0.47	10,703	84	7,323	(1,226)	1877	(271)	18,125	16,486	(75)	90.4%	433,758	(2,197)
5/11/2018	\$70.56	\$2.17	10,723	20	7,601	278	2566	689	18,125	16,635	149	91.1%	432,354	(1,404)
5/18/2018	\$71.30	\$0.74	10,725	2	8,159	558	1748	(818)	18,125	16,628	(7)	91.8%	438,132	5,778
5/25/2018	\$70.98	(\$0.32)	10,769	44	7,631	(528)	2179	431	18,125	17,155	527	93.9%	434,512	(3,620)