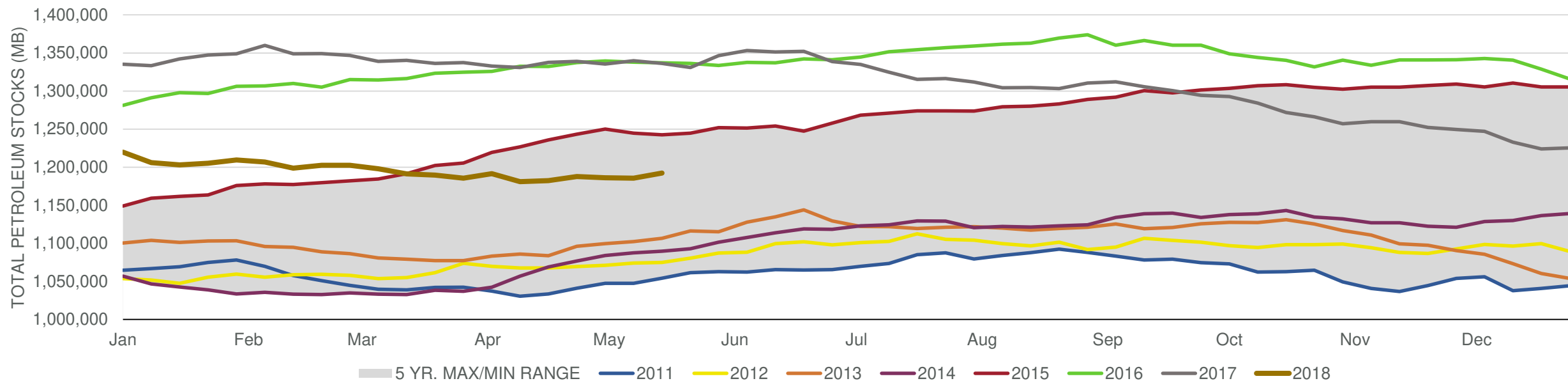


# EIA Weekly Petroleum Status Report

Week Ending: 5/18/2018

Total Stocks: **6,731 Mb** Crude Oil Stocks (excl. SPR): **5,778 Mb** Production: **2 Mbd**

### Total Petroleum Stocks



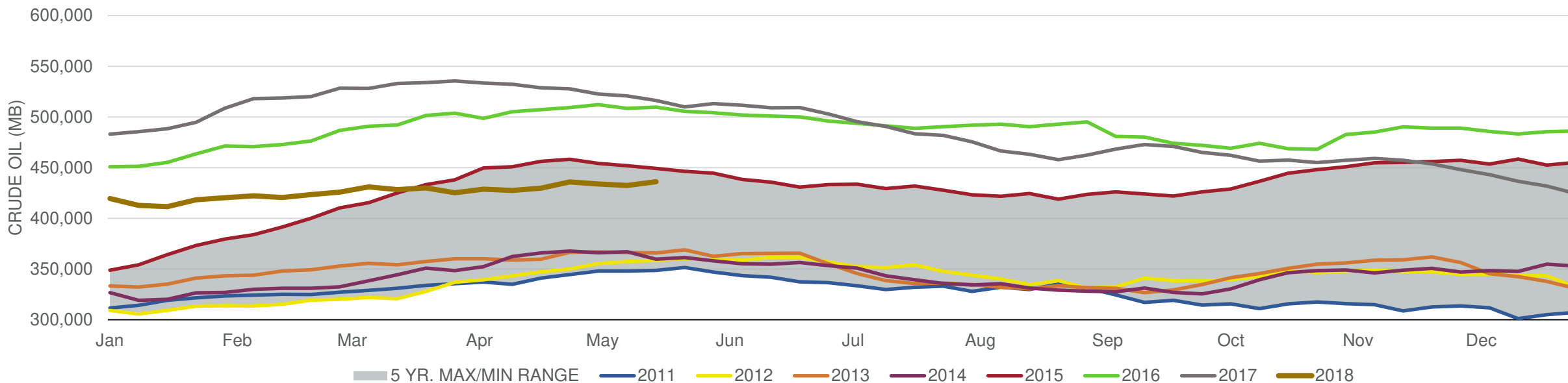
Week Ending	WTI	Change	GC Gaso	Change	NY No 2	Change	Crude	Change	Gasol	Change	Distillate	Change	Kero	Change	Resid	Change	Total Stocks	Change
4/20/2018	\$67.55	\$1.52	\$2.04	\$0.07	\$2.06	\$0.03	429,737	2,170	236,807	840	122,729	(2,611)	39,282	172	32,973	(407)	1,182,361	1,390
4/27/2018	\$67.91	\$0.37	\$2.07	\$0.03	\$2.10	\$0.04	435,955	6,218	237,978	1,171	118,829	(3,900)	39,753	471	32,888	(85)	1,187,725	5,364
5/4/2018	\$68.38	\$0.47	\$2.06	(\$0.02)	\$2.10	\$0.00	433,758	(2,197)	235,804	(2,174)	115,038	(3,791)	40,750	997	32,921	33	1,186,178	(1,547)
5/11/2018	\$70.56	\$2.17	\$2.10	\$0.04	\$2.18	\$0.07	432,354	(1,404)	232,014	(3,790)	114,946	(92)	41,267	517	32,790	(131)	1,185,519	(659)
5/18/2018	\$71.30	\$0.74	\$2.17	\$0.07	\$2.23	\$0.06	438,132	5,778	233,897	1,883	113,995	(951)	40,556	(711)	30,949	(1,841)	1,192,250	6,731

## EIA Weekly Petroleum Status Report

Week Ending: 5/18/2018

Total Stocks: **6,731 Mb** Crude Oil Stocks (excl. SPR): **5,778 Mb** Production: **2 Mbd**

### Commercial Crude Oil Stocks



Week Ending	WTI	Change	Production	Change	Imports	Change	Exports	Change	Capacity	Inputs	Change	Utilization	Crude Oil Stocks	Change
4/20/2018	\$67.55	\$1.52	10,586	46	8,469	539	2331	582	18,125	16,621	(328)	90.8%	429,737	2,170
4/27/2018	\$67.91	\$0.37	10,619	33	8,549	80	2148	(183)	18,125	16,561	(60)	91.1%	435,955	6,218
5/4/2018	\$68.38	\$0.47	10,703	84	7,323	(1,226)	1877	(271)	18,125	16,486	(75)	90.4%	433,758	(2,197)
5/11/2018	\$70.56	\$2.17	10,723	20	7,601	278	2566	689	18,125	16,635	149	91.1%	432,354	(1,404)
5/18/2018	\$71.30	\$0.74	10,725	2	8,159	558	1748	(818)	18,125	16,628	(7)	91.8%	438,132	5,778