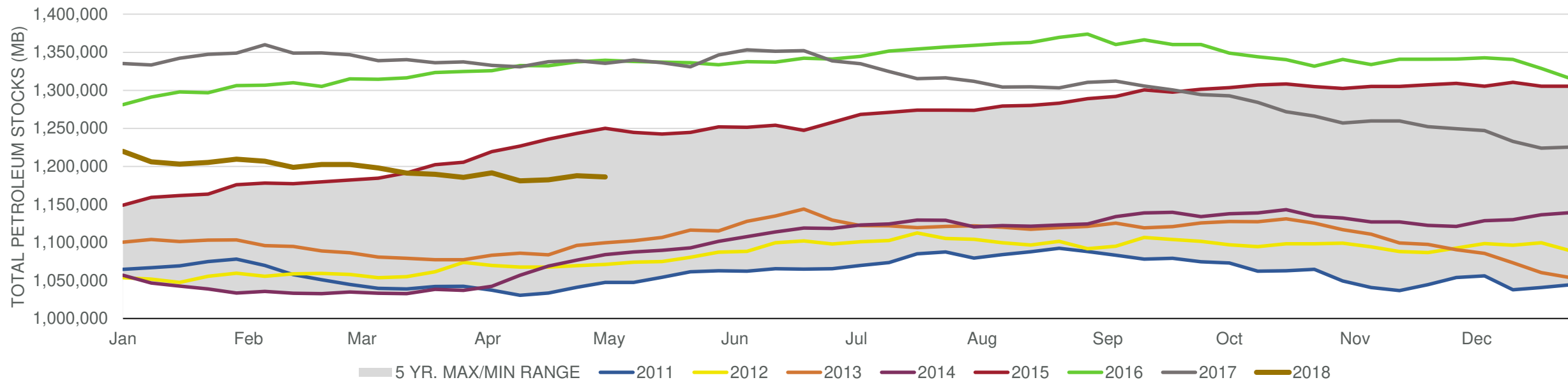


EIA Weekly Petroleum Status Report

Week Ending: 5/4/2018

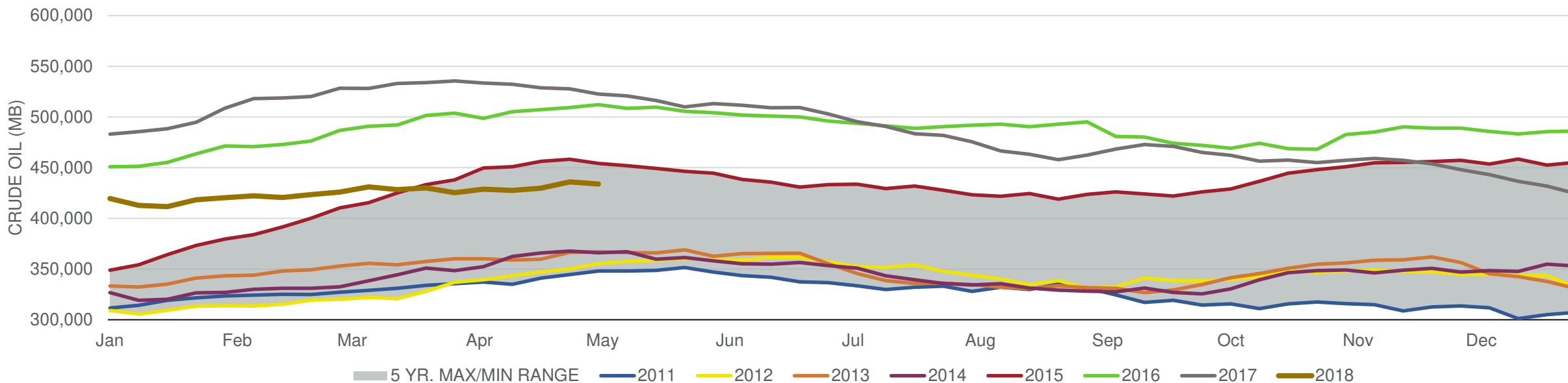
Total Stocks: **-1,547 Mb** Crude Oil Stocks (excl. SPR): **-2,197 Mb** Production: **84 Mbd**

Total Petroleum Stocks



Week Ending	WTI	Change	GC Gaso	Change	NY No 2	Change	Crude	Change	Gasol	Change	Distillate	Change	Kero	Change	Resid	Change	Total Stocks	Change
4/6/2018	\$63.07	(\$2.06)	\$1.87	(\$0.05)	\$1.94	(\$0.03)	428,638	3,306	238,935	458	128,447	(1,044)	40,002	(106)	34,548	(881)	1,191,549	5,968
4/13/2018	\$66.02	\$2.95	\$1.96	\$0.09	\$2.03	\$0.10	427,567	(1,071)	235,967	(2,968)	125,340	(3,107)	39,110	(892)	33,380	(1,168)	1,180,971	(10,578)
4/20/2018	\$67.55	\$1.52	\$1.99	\$0.03	\$2.06	\$0.03	429,737	2,170	236,807	840	122,729	(2,611)	39,282	172	32,973	(407)	1,182,361	1,390
4/27/2018	\$67.91	\$0.37	\$2.02	\$0.03	\$2.10	\$0.04	435,955	6,218	237,978	1,171	118,829	(3,900)	39,753	471	32,888	(85)	1,187,725	5,364
5/4/2018	\$68.38	\$0.47	\$2.03	\$0.00	\$2.10	\$0.00	433,758	(2,197)	235,804	(2,174)	115,038	(3,791)	40,750	997	32,921	33	1,186,178	(1,547)

Commercial Crude Oil Stocks



Week Ending	WTI	Change	Production	Change	Imports	Change	Exports	Change	Capacity	Inputs	Change	Utilization	Crude Oil Stocks	Change
4/6/2018	\$63.07	(\$2.06)	10,525	65	8,650	752	1205	(970)	18,125	17,019	83	93.5%	428,638	3,306
4/13/2018	\$66.02	\$2.95	10,540	15	7,930	(720)	1749	544	18,125	16,949	(70)	92.4%	427,567	(1,071)
4/20/2018	\$67.55	\$1.52	10,586	46	8,469	539	2331	582	18,125	16,621	(328)	90.8%	429,737	2,170
4/27/2018	\$67.91	\$0.37	10,619	33	8,549	80	2148	(183)	18,125	16,561	(60)	91.1%	435,955	6,218
5/4/2018	\$68.38	\$0.47	10,703	84	7,323	(1,226)	1877	(271)	18,125	16,486	(75)	90.4%	433,758	(2,197)