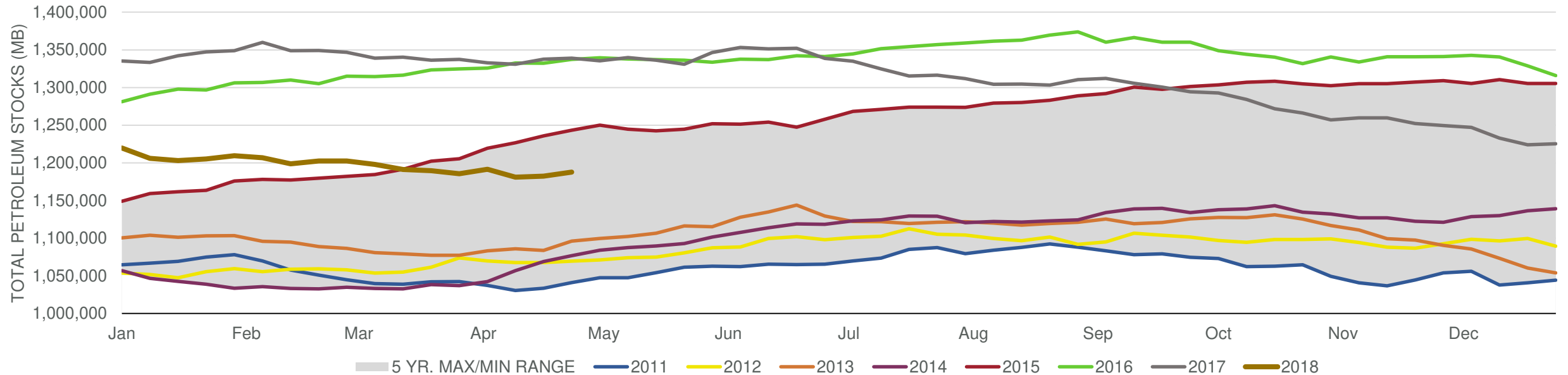


EIA Weekly Petroleum Status Report

Week Ending: 4/27/2018

Total Stocks: **5,364 Mb** Crude Oil Stocks (excl. SPR): **6,218 Mb** Production: **33 Mbd**

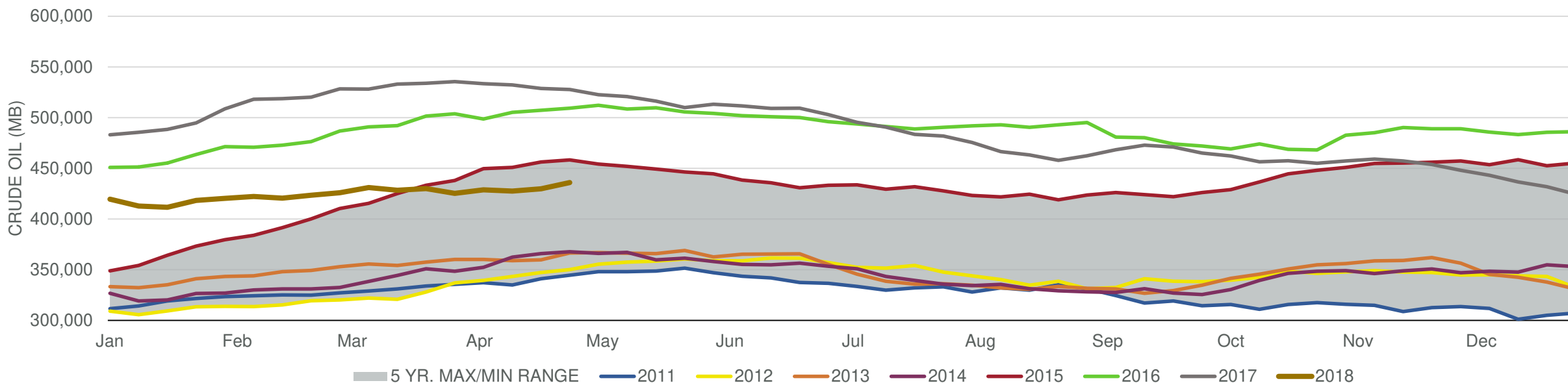
Total Petroleum Stocks



Week Ending	WTI	Change	GC Gaso	Change	NY No 2	Change	Crude	Change	Gaso	Change	Distillate	Change	Kero	Change	Resid	Change	Total Stocks	Change
3/30/2018	\$65.13	\$1.73	\$1.92	\$0.04	\$1.97	\$0.06	425,332	(4,617)	238,477	(1,116)	129,491	537	40,108	(1,023)	35,429	1,193	1,185,581	(3,939)
4/6/2018	\$63.07	(\$2.06)	\$1.87	(\$0.05)	\$1.94	(\$0.03)	428,638	3,306	238,935	458	128,447	(1,044)	40,002	(106)	34,548	(881)	1,191,549	5,968
4/13/2018	\$66.02	\$2.95	\$1.96	\$0.09	\$2.03	\$0.10	427,567	(1,071)	235,967	(2,968)	125,340	(3,107)	39,110	(892)	33,380	(1,168)	1,180,971	(10,578)
4/20/2018	\$67.55	\$1.52	\$1.99	\$0.03	\$2.06	\$0.03	429,737	2,170	236,807	840	122,729	(2,611)	39,282	172	32,973	(407)	1,182,361	1,390
4/27/2018	\$67.91	\$0.37	\$2.02	\$0.04	\$2.10	\$0.04	435,955	6,218	237,978	1,171	118,829	(3,900)	39,753	471	32,888	(85)	1,187,725	5,364

Total Stocks: **5,364 Mb** Crude Oil Stocks (excl. SPR): **6,218 Mb** Production: **33 Mbd**

Commercial Crude Oil Stocks



Week Ending	WTI	Change	Production	Change	Imports	Change	Exports	Change	Capacity	Inputs	Change	Utilization	Crude Oil Stocks	Change
3/30/2018	\$65.13	\$1.73	10,460	27	7,898	(250)	2175	597	18,125	16,936	141	93.0%	425,332	(4,617)
4/6/2018	\$63.07	(\$2.06)	10,525	65	8,650	752	1205	(970)	18,125	17,019	83	93.5%	428,638	3,306
4/13/2018	\$66.02	\$2.95	10,540	15	7,930	(720)	1749	544	18,125	16,949	(70)	92.4%	427,567	(1,071)
4/20/2018	\$67.55	\$1.52	10,586	46	8,469	539	2331	582	18,125	16,621	(328)	90.8%	429,737	2,170
4/27/2018	\$67.91	\$0.37	10,619	33	8,549	80	2148	(183)	18,125	16,561	(60)	91.1%	435,955	6,218