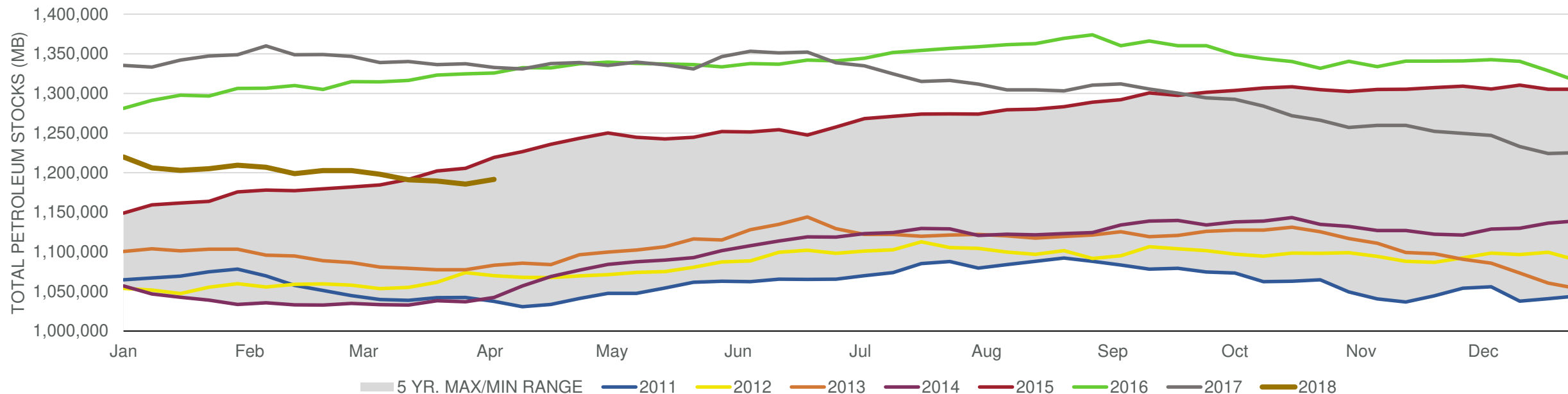


# EIA Weekly Petroleum Status Report

Week Ending: 4/06/2018

Total Stocks: **5,968 Mb** Crude Oil Stocks (excl. SPR): **3,306 Mb** Production: **65 Mbd**

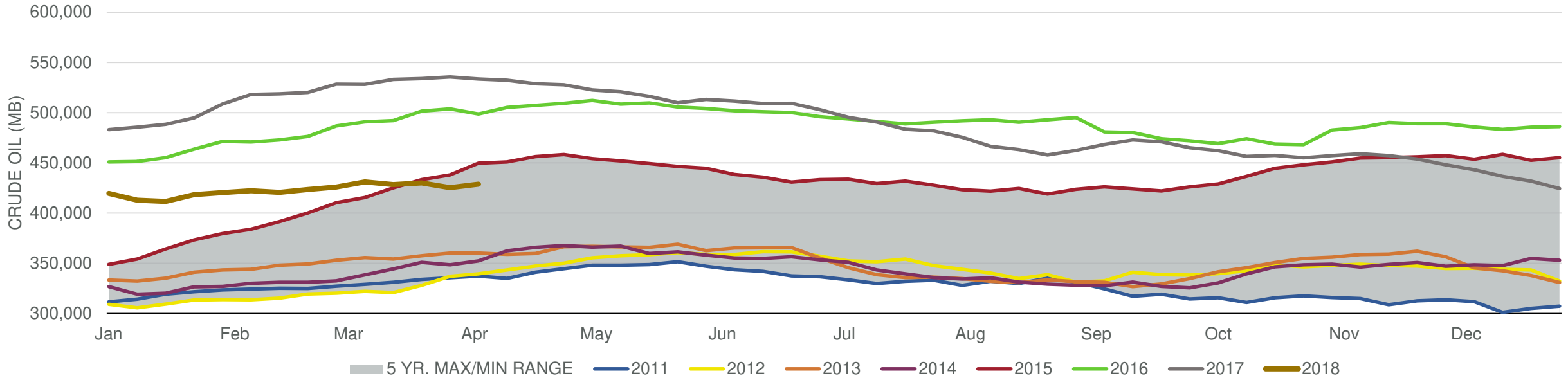
### Total Petroleum Stocks



Week Ending	WTI	Change	GC Gaso	Change	NY No 2	Change	Crude	Change	Gasoline	Change	Distillate	Change	Kero	Change	Resid	Change	Total Stocks	Change
3/9/2018	\$61.49	(\$1.05)	\$1.74	(\$0.04)	\$1.80	(\$0.06)	430,928	5,022	244,758	(6,271)	133,066	(4,360)	41,582	(1,108)	33,416	729	1,198,052	(4,526)
3/16/2018	\$61.22	(\$0.27)	\$1.74	\$0.00	\$1.81	\$0.02	428,306	(2,622)	243,065	(1,693)	131,044	(2,022)	40,976	(606)	32,746	(670)	1,191,104	(6,948)
3/23/2018	\$63.40	\$2.18	\$1.88	\$0.14	\$1.91	\$0.10	429,949	1,643	239,593	(3,472)	128,954	(2,090)	41,131	155	34,236	1,490	1,189,520	(1,584)
3/30/2018	\$65.13	\$1.73	\$1.92	\$0.04	\$1.97	\$0.06	425,332	(4,617)	238,477	(1,116)	129,491	537	40,108	(1,023)	35,429	1,193	1,185,581	(3,939)
4/6/2018	\$63.07	(\$2.06)	\$1.88	(\$0.03)	\$1.94	(\$0.03)	428,638	3,306	238,935	458	128,447	(1,044)	40,002	(106)	34,548	(881)	1,191,549	5,968

Total Stocks: **5,968 Mb** Crude Oil Stocks (excl. SPR): **3,306 Mb** Production: **65 Mbd**

**Commercial Crude Oil Stocks**



Week Ending	WTI	Change	Production	Change	Imports	Change	Exports	Change	Capacity	Inputs	Change	Utilization	Crude Oil Stocks	Change
3/9/2018	\$61.49	(\$1.05)	10,381	12	7,585	(418)	1487	(11)	18,125	16,367	432	90.0%	430,928	5,022
3/16/2018	\$61.22	(\$0.27)	10,407	26	7,077	(508)	1573	86	18,125	16,777	410	91.7%	428,306	(2,622)
3/23/2018	\$63.40	\$2.18	10,433	26	8,148	1,071	1578	5	18,125	16,795	18	92.3%	429,949	1,643
3/30/2018	\$65.13	\$1.73	10,460	27	7,898	(250)	2175	597	18,125	16,936	141	93.0%	425,332	(4,617)
4/6/2018	\$63.07	(\$2.06)	10,525	65	8,650	752	1205	(970)	18,125	17,019	83	93.5%	428,638	3,306