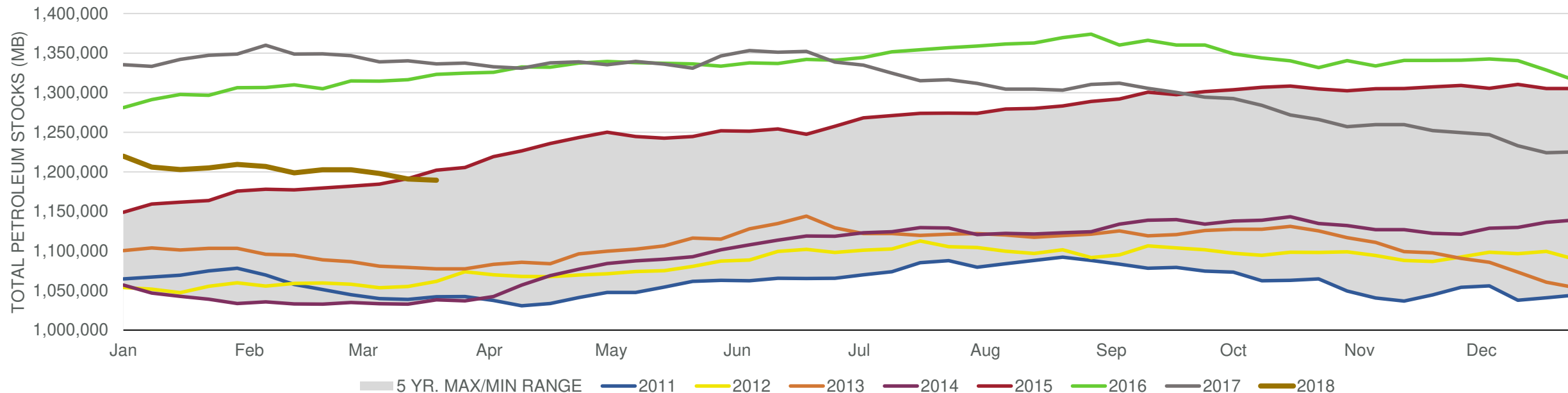


EIA Weekly Petroleum Status Report

Week Ending: 3/23/2018

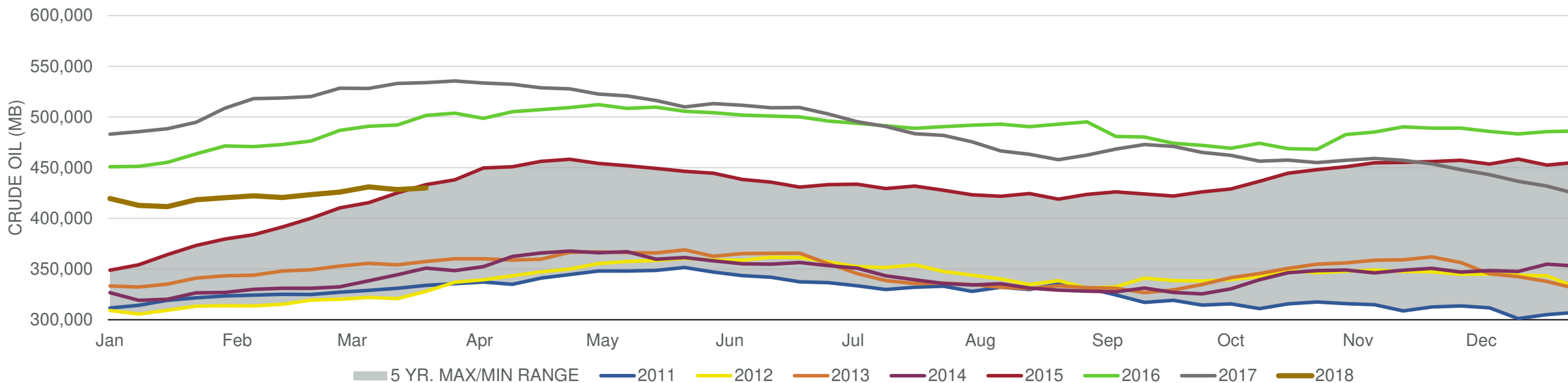
Total Stocks: **-1,584 Mb** Crude Oil Stocks (excl. SPR): **1,643 Mb** Production: **26 Mbd**

Total Petroleum Stocks



Week Ending	WTI	Change	GC Gaso	Change	NY No 2	Change	Crude	Change	Gaso	Change	Distillate	Change	Kero	Change	Resid	Change	Total Stocks	Change
2/23/2018	\$62.47	\$1.91	\$1.76	\$0.06	\$1.84	\$0.05	423,498	3,019	251,817	2,483	137,985	(960)	43,068	39	32,056	772	1,202,602	3,726
3/2/2018	\$62.07	(\$0.40)	\$1.76	(\$0.00)	\$1.84	\$0.00	425,906	2,408	251,029	(788)	137,426	(559)	42,690	(378)	32,687	631	1,202,578	(24)
3/9/2018	\$61.65	(\$0.42)	\$1.73	(\$0.03)	\$1.79	(\$0.05)	430,928	5,022	244,758	(6,271)	133,066	(4,360)	41,582	(1,108)	33,416	729	1,198,052	(4,526)
3/16/2018	\$61.28	(\$0.38)	\$1.74	\$0.01	\$1.83	\$0.03	428,306	(2,622)	243,065	(1,693)	131,044	(2,022)	40,976	(606)	32,746	(670)	1,191,104	(6,948)
3/23/2018	\$64.11	\$2.83	\$1.88	\$0.14	\$1.93	\$0.11	429,949	1,643	239,593	(3,472)	128,954	(2,090)	41,131	155	34,236	1,490	1,189,520	(1,584)

Commercial Crude Oil Stocks



Week Ending	WTI	Change	Production	Change	Imports	Change	Exports	Change	Capacity	Inputs	Change	Utilization	Crude Oil Stocks	Change
2/23/2018	\$62.47	\$1.91	10,283	13	7,282	261	1445	(599)	18,125	15,882	49	87.8%	423,498	3,019
3/2/2018	\$62.07	(\$0.40)	10,369	86	8,003	721	1498	53	18,125	15,935	53	88.0%	425,906	2,408
3/9/2018	\$61.65	(\$0.42)	10,381	12	7,585	(418)	1487	(11)	18,125	16,367	432	90.0%	430,928	5,022
3/16/2018	\$61.28	(\$0.38)	10,407	26	7,077	(508)	1573	86	18,125	16,777	410	91.7%	428,306	(2,622)
3/23/2018	\$64.11	\$2.83	10,433	26	8,148	1,071	1578	5	18,125	16,795	18	92.3%	429,949	1,643