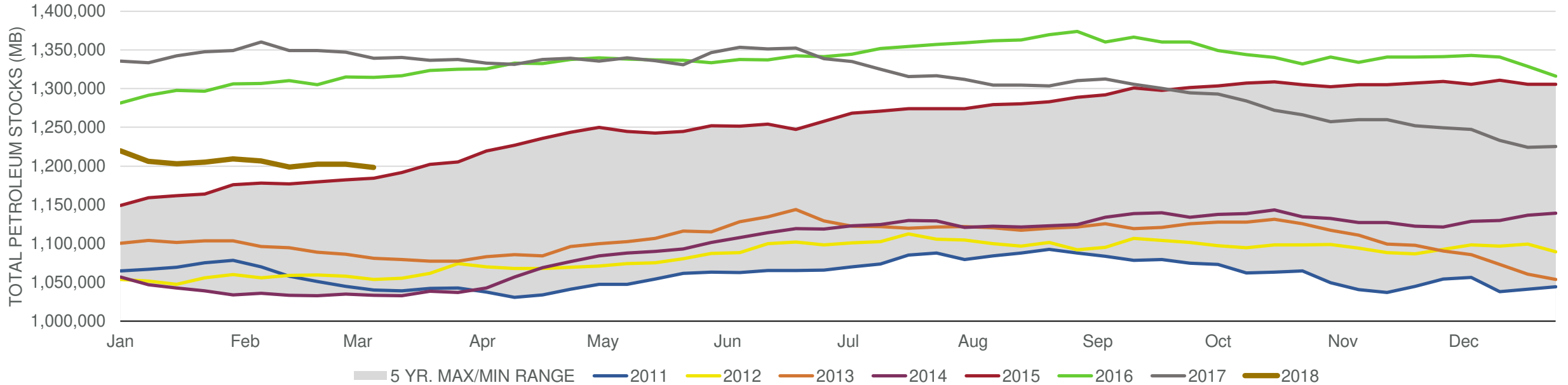


## EIA Weekly Petroleum Status Report

Week Ending: 3/09/2018

Total Stocks: **-4,526 Mb** Crude Oil Stocks (excl. SPR): **5,022 Mb** Production: **12 Mbd**

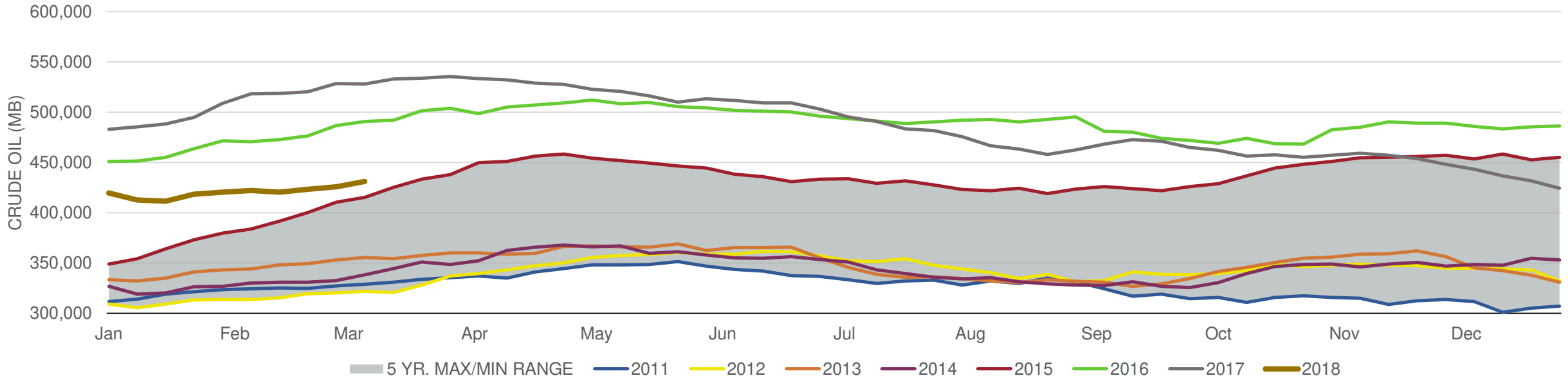
### Total Petroleum Stocks



Week Ending	WTI	Change	GC Gaso	Change	NY No 2	Change	Crude	Change	Gaso	Change	Distillate	Change	Kero	Change	Resid	Change	Total Stocks	Change
2/9/2018	\$62.01	(\$3.30)	\$1.81	(\$0.12)	\$1.89	(\$0.13)	422,095	1,841	249,073	3,599	141,367	(459)	43,415	798	31,182	(2,658)	1,206,796	(2,672)
2/16/2018	\$60.56	(\$1.45)	\$1.70	(\$0.11)	\$1.79	(\$0.10)	420,479	(1,616)	249,334	261	138,945	(2,422)	43,029	(386)	31,284	102	1,198,876	(7,920)
2/23/2018	\$62.47	\$1.91	\$1.76	\$0.06	\$1.84	\$0.05	423,498	3,019	251,817	2,483	137,985	(960)	43,068	39	32,056	772	1,202,602	3,726
3/2/2018	\$62.07	(\$0.40)	\$1.78	\$0.02	\$1.84	\$0.00	425,906	2,408	251,029	(788)	137,426	(559)	42,690	(378)	32,687	631	1,202,578	(24)
3/9/2018	\$61.65	(\$0.42)	\$1.74	(\$0.04)	\$1.79	(\$0.05)	430,928	5,022	244,758	(6,271)	133,066	(4,360)	41,582	(1,108)	33,416	729	1,198,052	(4,526)

Total Stocks: **-4,526 Mb** Crude Oil Stocks (excl. SPR): **5,022 Mb** Production: **12 Mbd**

Commercial Crude Oil Stocks



Week Ending	WTI	Change	Production	Change	Imports	Change	Exports	Change	Capacity	Inputs	Change	Utilization	Crude Oil Stocks	Change
2/9/2018	\$62.01	(\$3.30)	10,271	20	7,888	(4)	1322	35	18,125	16,162	(635)	89.8%	422,095	1,841
2/16/2018	\$60.56	(\$1.45)	10,270	(1)	7,021	(867)	2044	722	18,125	15,833	(329)	88.1%	420,479	(1,616)
2/23/2018	\$62.47	\$1.91	10,283	13	7,282	261	1445	(599)	18,125	15,882	49	87.8%	423,498	3,019
3/2/2018	\$62.07	(\$0.40)	10,369	86	8,003	721	1498	53	18,125	15,935	53	88.0%	425,906	2,408
3/9/2018	\$61.65	(\$0.42)	10,381	12	7,585	(418)	1487	(11)	18,125	16,367	432	90.0%	430,928	5,022