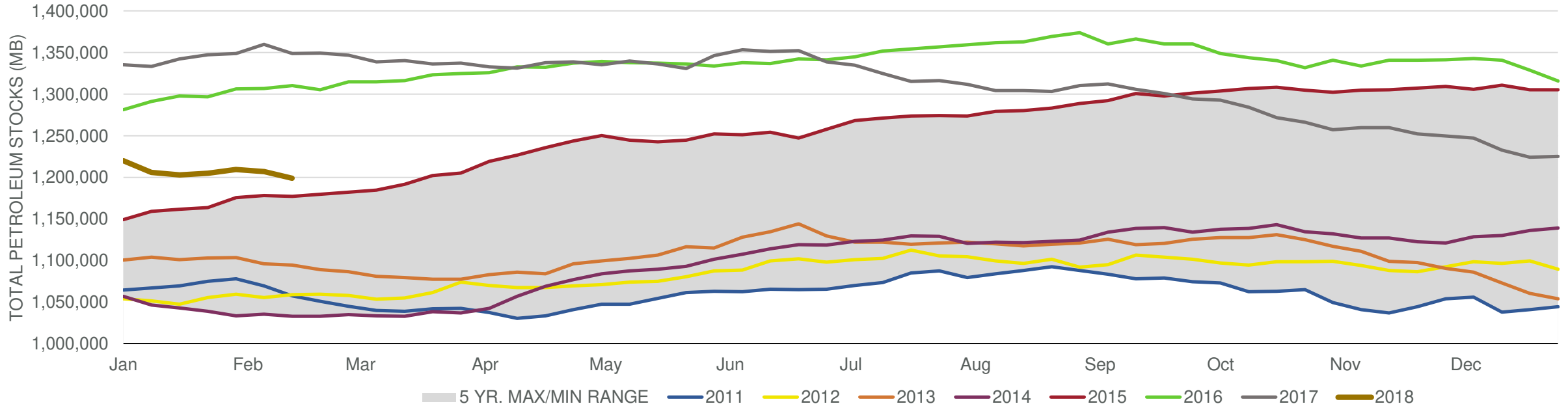


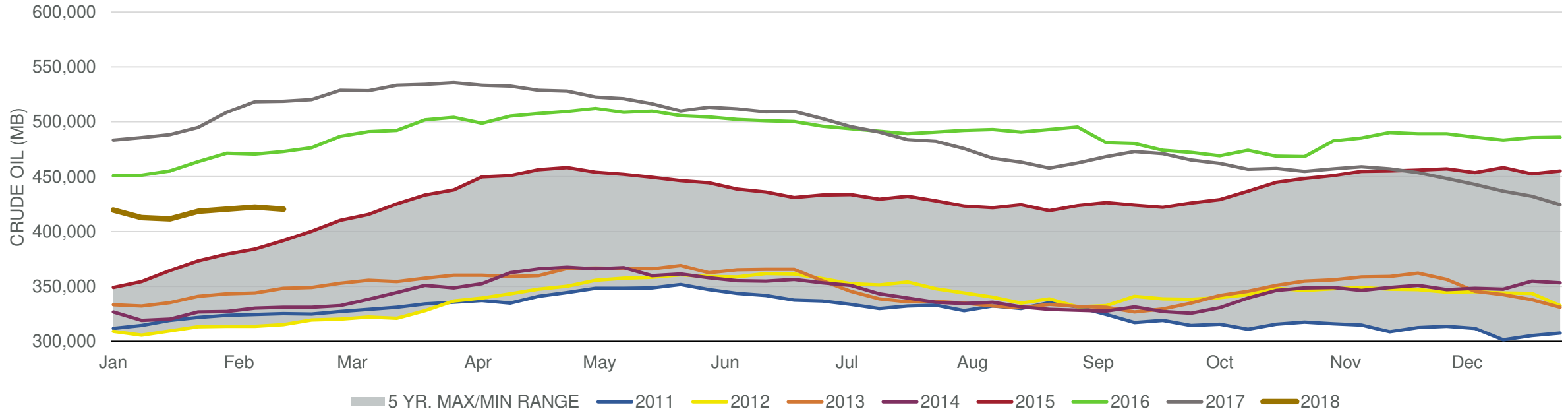
Total Stocks: **-7,920 Mb** Crude Oil Stocks (excl. SPR): **-1,616 Mb** Production: **-1 Mbd**

Total Petroleum Stocks



Week Ending	WTI	Change	GC Gaso	Change	NY No 2	Change	Crude	Change	Gaso	Change	Distillate	Change	Kero	Change	Resid	Change	Total Stocks	Change
1/19/2018	\$63.75	\$0.11	\$1.88	\$0.06	\$2.00	(\$0.02)	411,583	(1,071)	244,040	3,098	139,840	639	40,851	(287)	32,413	357	1,203,013	(2,936)
1/26/2018	\$65.55	\$1.80	\$1.94	\$0.06	\$2.04	\$0.04	418,359	6,776	242,060	(1,980)	137,900	(1,940)	41,614	763	33,679	1,266	1,205,076	2,063
2/2/2018	\$65.01	(\$0.54)	\$1.88	(\$0.05)	\$1.98	(\$0.06)	420,254	1,895	245,474	3,414	141,826	3,926	42,617	1,003	33,840	161	1,209,468	4,392
2/9/2018	\$61.06	(\$3.95)	\$1.78	(\$0.11)	\$1.82	(\$0.16)	422,095	1,841	249,073	3,599	141,367	(459)	43,415	798	31,182	(2,658)	1,206,796	(2,672)
2/16/2018	\$60.85	(\$0.21)	\$1.71	(\$0.07)	\$1.81	(\$0.01)	420,479	(1,616)	249,334	261	138,945	(2,422)	43,029	(386)	31,284	102	1,198,876	(7,920)

Commercial Crude Oil Stocks



Week Ending	WTI	Change	Production	Change	Imports	Change	Exports	Change	Capacity	Inputs	Change	Utilization	Crude Oil Stocks	Change
1/19/2018	\$63.75	\$0.11	9,878	128	8,041	91	1411	162	18,125	16,483	(392)	90.9%	411,583	(1,071)
1/26/2018	\$65.55	\$1.80	9,919	41	8,430	389	1765	354	18,125	16,013	(470)	88.1%	418,359	6,776
2/2/2018	\$65.01	(\$0.54)	10,251	332	7,892	(538)	1287	(478)	18,125	16,797	784	92.5%	420,254	1,895
2/9/2018	\$61.06	(\$3.95)	10,271	20	7,888	(4)	1322	35	18,125	16,162	(635)	89.8%	422,095	1,841
2/16/2018	\$60.85	(\$0.21)	10,270	(1)	7,021	(867)	2044	722	18,125	15,833	(329)	88.1%	420,479	(1,616)