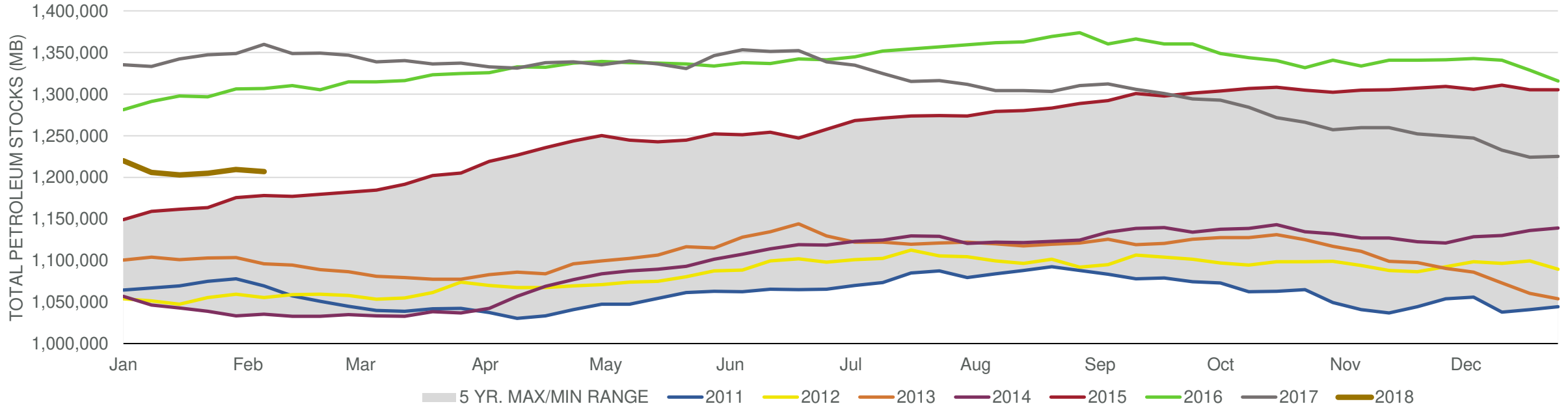
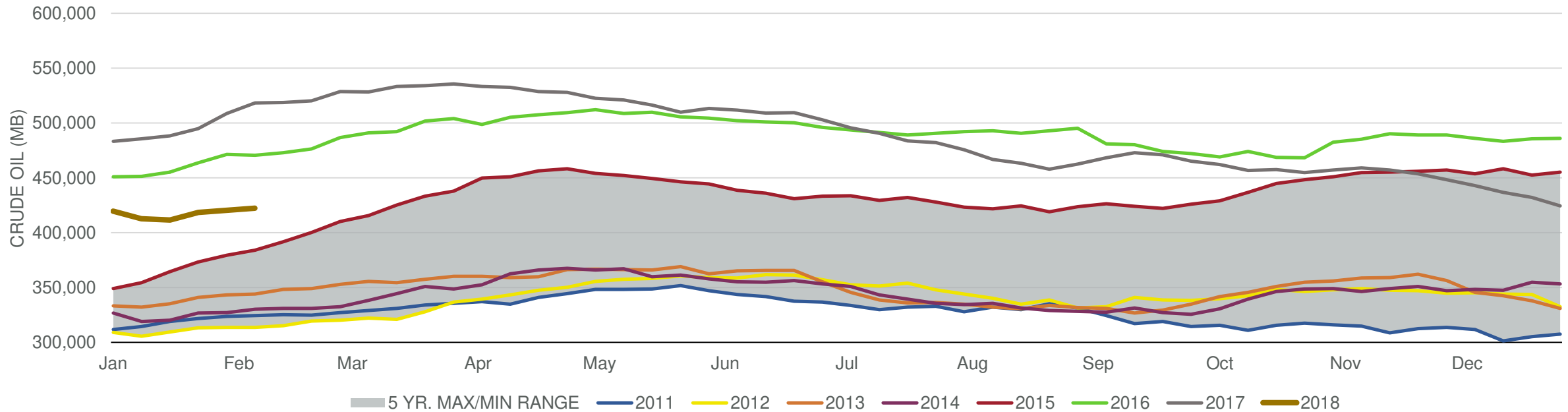


## Total Petroleum Stocks



Week Ending	WTI	Change	GC Gaso	Change	NY No 2	Change	Crude	Change	Gasoline	Change	Distillate	Change	Kero	Change	Resid	Change	Total Stocks	Change
1/12/2018	\$63.26	\$2.07	\$1.80	\$0.03	\$2.01	\$0.02	412,654	(6,861)	240,942	3,620	139,201	(3,887)	41,138	(215)	32,056	964	1,205,949	(13,798)
1/19/2018	\$63.77	\$0.51	\$1.87	\$0.07	\$2.01	(\$0.00)	411,583	(1,071)	244,040	3,098	139,840	639	40,851	(287)	32,413	357	1,203,013	(2,936)
1/26/2018	\$65.14	\$1.37	\$1.93	\$0.06	\$2.04	\$0.02	418,359	6,776	242,060	(1,980)	137,900	(1,940)	41,614	763	33,679	1,266	1,205,076	2,063
2/2/2018	\$65.32	\$0.18	\$1.92	(\$0.00)	\$2.00	(\$0.03)	420,254	1,895	245,474	3,414	141,826	3,926	42,617	1,003	33,840	161	1,209,468	4,392
2/9/2018	\$62.01	(\$3.30)	\$1.81	(\$0.12)	\$1.86	(\$0.15)	422,095	1,841	249,073	3,599	141,367	(459)	43,415	798	31,182	(2,658)	1,206,796	(2,672)

## Commercial Crude Oil Stocks



Week Ending	WTI	Change	Production	Change	Imports	Change	Exports	Change	Capacity	Inputs	Change	Utilization	Crude Oil Stocks	Change
1/12/2018	\$63.26	\$2.07	9,750	258	7,950	292	1249	234	18,125	16,875	(448)	93.0%	412,654	(6,861)
1/19/2018	\$63.77	\$0.51	9,878	128	8,041	91	1411	162	18,125	16,483	(392)	90.9%	411,583	(1,071)
1/26/2018	\$65.14	\$1.37	9,919	41	8,430	389	1765	354	18,125	16,013	(470)	88.1%	418,359	6,776
2/2/2018	\$65.32	\$0.18	10,251	332	7,892	(538)	1287	(478)	18,125	16,797	784	92.5%	420,254	1,895
2/9/2018	\$62.01	(\$3.30)	10,271	20	7,888	(4)	1322	35	18,125	16,162	(635)	89.8%	422,095	1,841