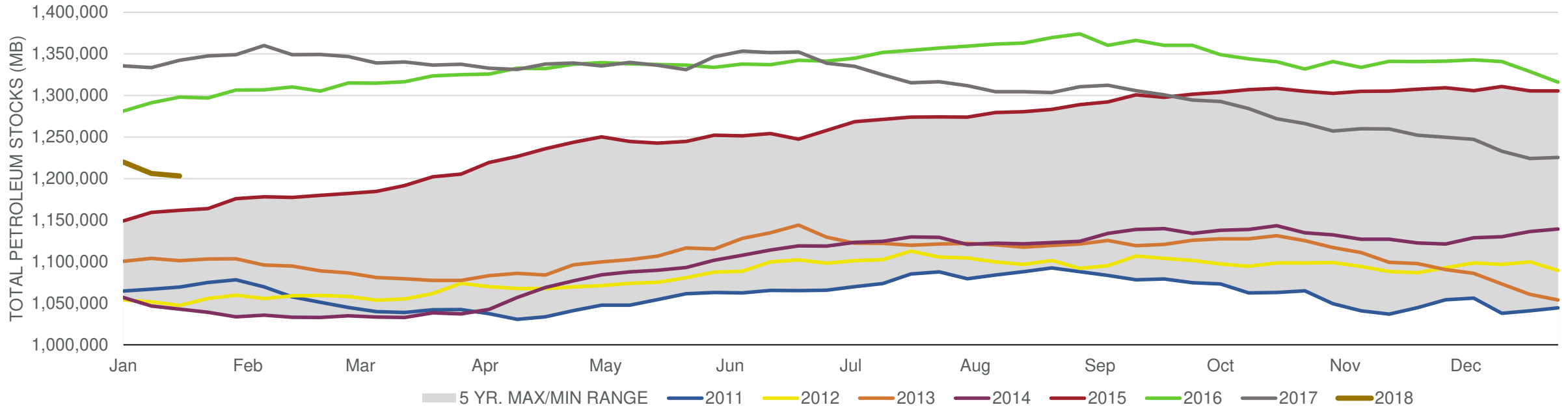
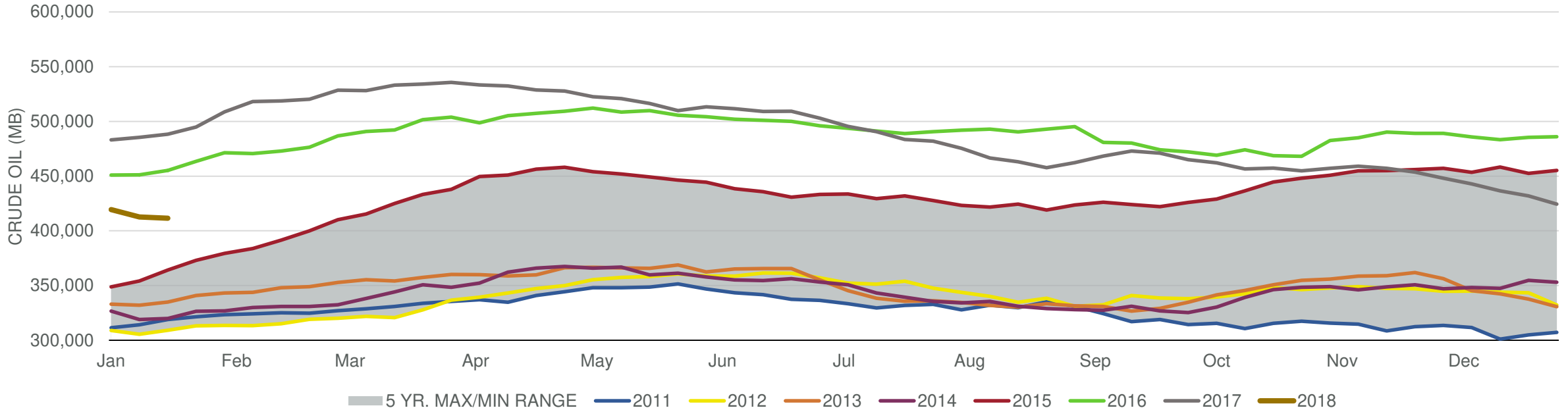


Total Petroleum Stocks



Week Ending	WTI	Change	GC Gaso	Change	NY No 2	Change	Crude	Change	Gasol	Change	Distillate	Change	Kero	Change	Resid	Change	Total Stocks	Change
12/29/2017	\$59.13	\$1.72	\$1.75	\$0.11	\$1.90	\$0.07	424,463	(7,419)	233,187	4,813	138,834	8,899	40,649	774	30,385	(1,033)	1,225,271	1,168
1/5/2018	\$61.18	\$2.05	\$1.77	\$0.02	\$2.00	\$0.10	419,515	(4,948)	237,322	4,135	143,088	4,254	41,353	704	31,092	707	1,219,747	(5,524)
1/12/2018	\$63.26	\$2.07	\$1.80	\$0.03	\$2.01	\$0.02	412,654	(6,861)	240,942	3,620	139,201	(3,887)	41,138	(215)	32,056	964	1,205,949	(13,798)
1/19/2018	\$63.77	\$0.51	\$1.86	\$0.06	\$2.01	(\$0.00)	411,583	(1,071)	244,040	3,098	139,840	639	40,851	(287)	32,413	357	1,203,013	(2,936)
1/26/2018	\$65.14	\$1.37	\$1.91	\$0.05	\$2.04	\$0.02	418,359	6,776	242,060	(1,980)	137,900	(1,940)	41,614	763	33,679	1,266	1,205,076	2,063

Commercial Crude Oil Stocks



Week Ending	WTI	Change	Production	Change	Imports	Change	Exports	Change	Capacity	Inputs	Change	Utilization	Crude Oil Stocks	Change
12/29/2017	\$59.13	\$1.72	9,782	28	7,966	(27)	1475	265	18,125	17,608	210	96.7%	424,463	(7,419)
1/5/2018	\$61.18	\$2.05	9,492	(290)	7,658	(308)	1015	(460)	18,125	17,323	(285)	95.3%	419,515	(4,948)
1/12/2018	\$63.26	\$2.07	9,750	258	7,950	292	1249	234	18,125	16,875	(448)	93.0%	412,654	(6,861)
1/19/2018	\$63.77	\$0.51	9,878	128	8,041	91	1411	162	18,125	16,483	(392)	90.9%	411,583	(1,071)
1/26/2018	\$65.14	\$1.37	9,919	41	8,430	389	1765	354	18,125	16,013	(470)	88.1%	418,359	6,776