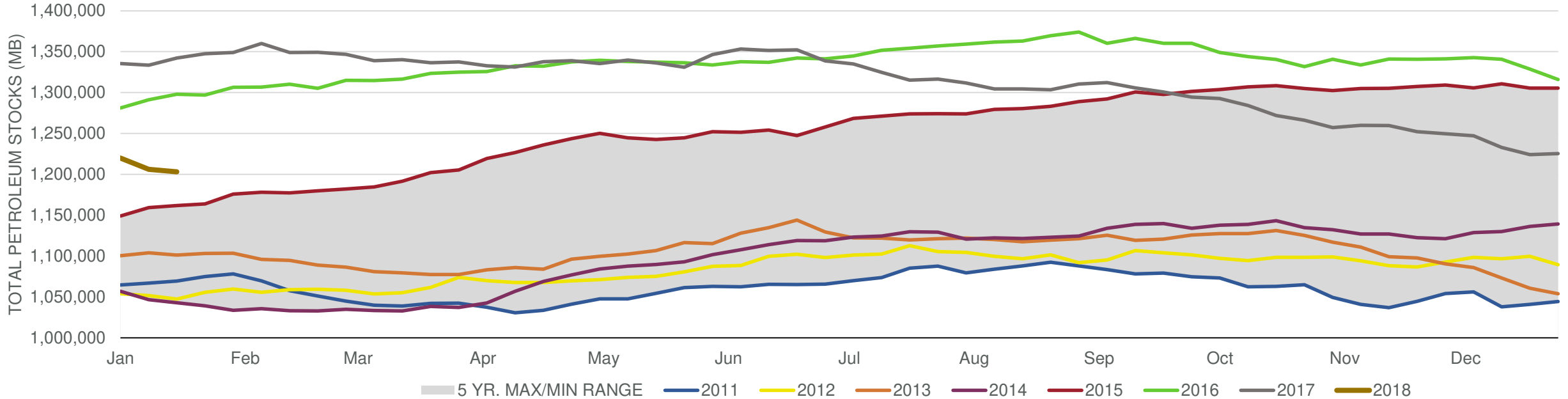
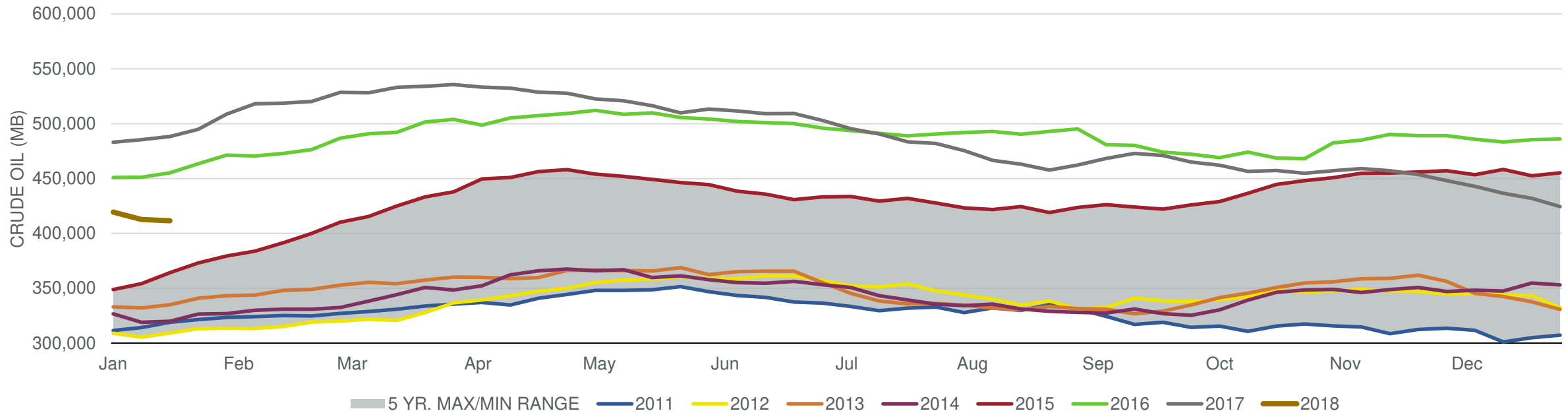


## Total Petroleum Stocks



Week Ending	WTI	Change	GC Gaso	Change	NY No 2	Change	Crude	Change	Gasoline	Change	Distillate	Change	Kero	Change	Resid	Change	Total Stocks	Change
12/22/2017	\$57.41	\$0.37	\$1.64	(\$0.05)	\$1.83	\$0.01	431,882	(4,609)	228,374	591	129,935	1,090	39,875	41	31,418	603	1,224,103	(8,792)
12/29/2017	\$59.13	\$1.72	\$1.75	\$0.11	\$1.90	\$0.07	424,463	(7,419)	233,187	4,813	138,834	8,899	40,649	774	30,385	(1,033)	1,225,271	1,168
1/5/2018	\$61.18	\$2.05	\$1.77	\$0.02	\$2.00	\$0.10	419,515	(4,948)	237,322	4,135	143,088	4,254	41,353	704	31,092	707	1,219,747	(5,524)
1/12/2018	\$63.26	\$2.07	\$1.80	\$0.03	\$2.01	\$0.02	412,654	(6,861)	240,942	3,620	139,201	(3,887)	41,138	(215)	32,056	964	1,205,949	(13,798)
1/19/2018	\$63.77	\$0.51	\$1.86	\$0.06	\$2.01	(\$0.00)	411,583	(1,071)	244,040	3,098	139,840	639	40,851	(287)	32,413	357	1,203,013	(2,936)

## Commercial Crude Oil Stocks



Week Ending	WTI	Change	Production	Change	Imports	Change	Exports	Change	Capacity	Inputs	Change	Utilization	Crude Oil Stocks	Change
12/22/2017	\$57.41	\$0.37	9,754	(35)	7,993	159	1210	(648)	18,125	17,398	335	95.7%	431,882	(4,609)
12/29/2017	\$59.13	\$1.72	9,782	28	7,966	(27)	1475	265	18,125	17,608	210	96.7%	424,463	(7,419)
1/5/2018	\$61.18	\$2.05	9,492	(290)	7,658	(308)	1015	(460)	18,125	17,323	(285)	95.3%	419,515	(4,948)
1/12/2018	\$63.26	\$2.07	9,750	258	7,950	292	1249	234	18,125	16,875	(448)	93.0%	412,654	(6,861)
1/19/2018	\$63.77	\$0.51	9,878	128	8,041	91	1411	162	18,125	16,483	(392)	90.9%	411,583	(1,071)