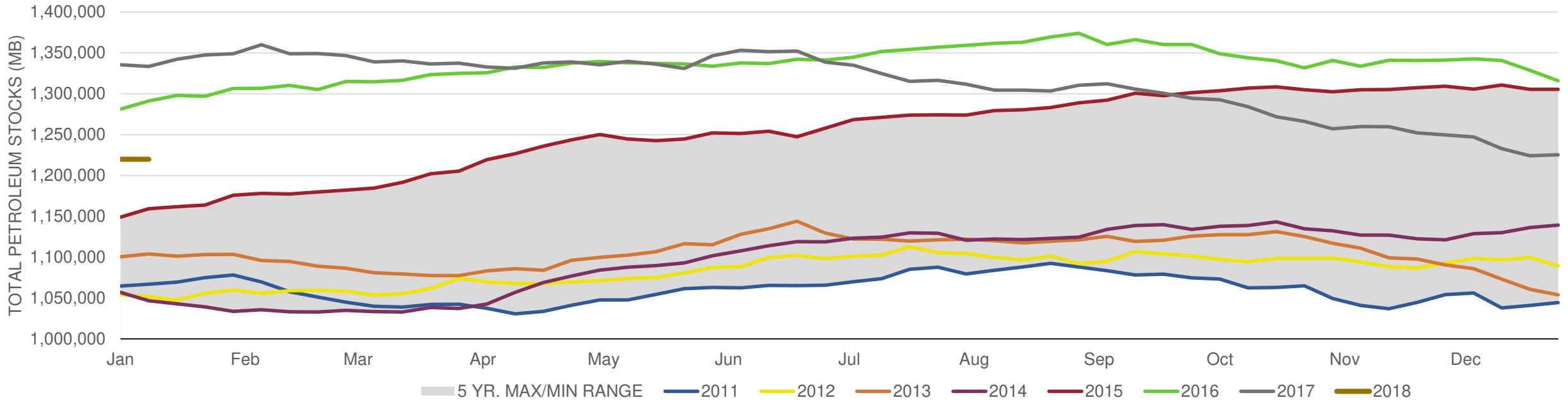


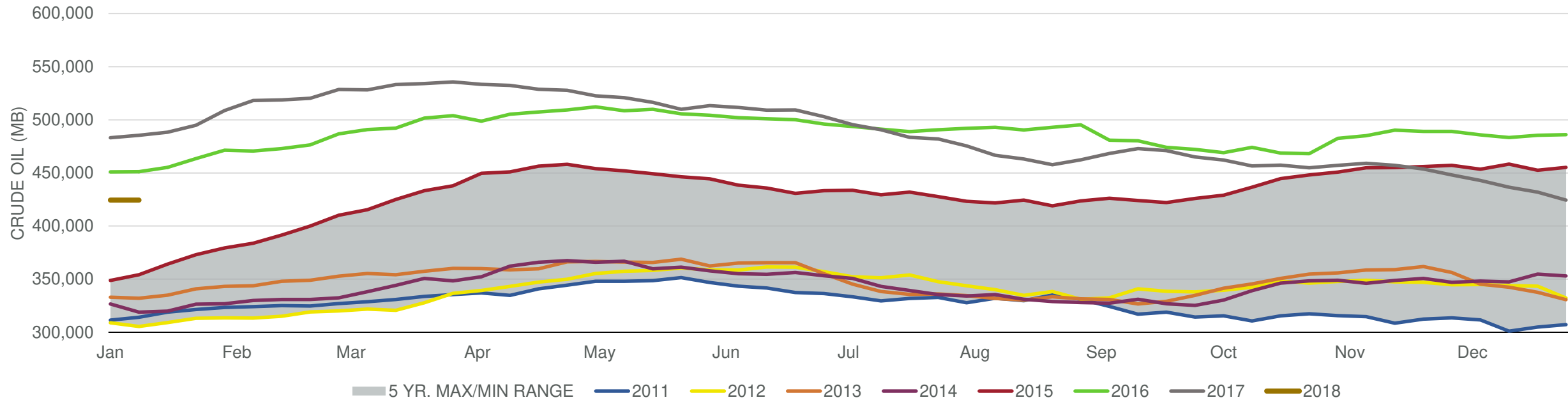
better, faster decisions **Total Stocks: -5,524 Mb Crude Oil Stocks (excl. SPR): -4,948 Mb Production: -290 Mb Mbd**

Total Petroleum Stocks



Week Ending	WTI	Change	GC Gaso	Change	NY No 2	Change	Crude	Change	Gasoline	Change	Distillate	Change	Kero	Change	Resid	Change	Total Stocks	Change
12/8/2017	\$57.34	(\$0.73)	\$1.70	(\$0.04)	\$1.81	(\$0.04)	442,986	(5,117)	226,546	5,664	128,076	(1,370)	40,855	588	31,515	389	1,247,055	(2,555)
12/15/2017	\$57.04	(\$0.30)	\$1.68	(\$0.02)	\$1.83	\$0.02	436,491	(6,495)	227,783	1,237	128,845	769	39,834	(1,021)	30,815	(700)	1,232,895	(14,160)
12/22/2017	\$57.41	\$0.37	\$1.66	(\$0.02)	\$1.84	\$0.01	431,882	(4,609)	228,374	591	129,935	1,090	39,875	41	31,418	603	1,224,103	(8,792)
12/29/2017	\$59.13	\$1.72	\$1.75	\$0.09	\$1.93	\$0.09	424,463	(7,419)	233,187	4,813	138,834	8,899	40,649	774	30,385	(1,033)	1,225,271	1,168
1/5/2018	\$61.18	\$2.05	\$1.77	\$0.02	\$2.01	\$0.08	419,515	(4,948)	237,322	4,135	143,088	4,254	41,353	704	31,092	707	1,219,747	(5,524)

Commercial Crude Oil Stocks



Week Ending	WTI	Change	Production	Change	Imports	Change	Exports	Change	Capacity	Inputs	Change	Utilization	Crude Oil Stocks	Change
12/8/2017	\$57.34	(\$0.73)	9,780	73	w	161	1086	(272)	18,125	16,952	(243)	93.4%	442,986	(5,117)
12/15/2017	\$57.04	(\$0.30)	9,789	9	7,834	471	1858	772	18,125	17,063	111	94.1%	436,491	(6,495)
12/22/2017	\$57.41	\$0.37	9,754	(35)	7,993	159	1210	(648)	18,125	17,398	335	95.7%	431,882	(4,609)
12/29/2017	\$59.13	\$1.72	9,782	28	7,966	(27)	1475	265	18,125	17,608	210	96.7%	424,463	(7,419)
1/5/2018	\$61.18	\$2.05	9,492	(290)	7,658	(308)	1015	(460)	18,125	17,323	(285)	95.3%	419,515	(4,948)