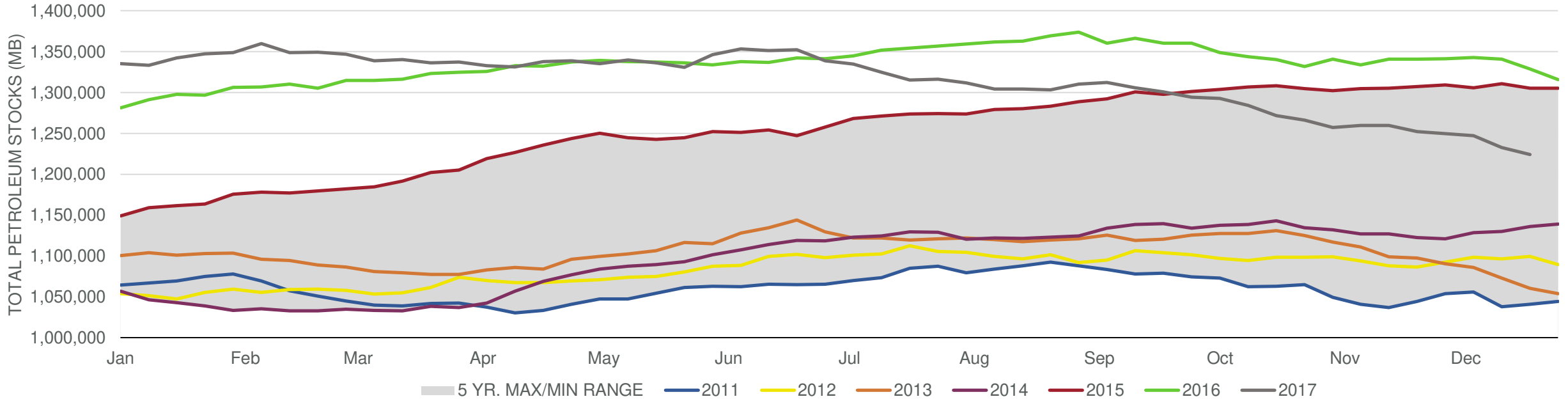
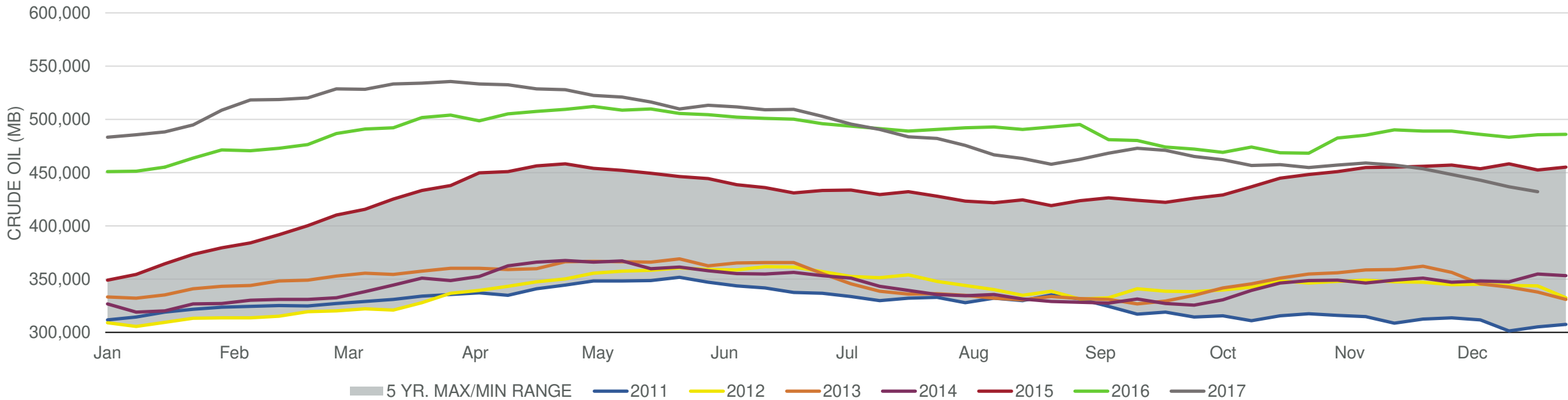


Total Petroleum Stocks



Week Ending	WTI	Change	GC Gaso	Change	NY No 2	Change	Crude	Change	Gasoline	Change	Distillate	Change	Kero	Change	Resid	Change	Total Stocks	Change
11/24/2017	\$57.94	\$2.24	\$1.73	\$0.01	\$1.85	\$0.03	453,713	(3,429)	214,102	3,627	127,779	2,747	41,281	41	32,204	(1,929)	1,252,133	(7,588)
12/1/2017	\$57.69	(\$0.25)	\$1.72	(\$0.01)	\$1.83	(\$0.02)	448,103	(5,610)	220,882	6,780	129,446	1,667	40,267	(1,014)	31,126	(1,078)	1,249,610	(2,523)
12/8/2017	\$56.99	(\$0.70)	\$1.69	(\$0.03)	\$1.82	(\$0.01)	442,986	(5,117)	226,546	5,664	128,076	(1,370)	40,855	588	31,515	389	1,247,055	(2,555)
12/15/2017	\$57.03	\$0.05	\$1.65	(\$0.04)	\$1.83	\$0.02	436,491	(6,495)	227,783	1,237	128,845	769	39,834	(1,021)	30,815	(700)	1,232,895	(14,160)
12/22/2017	\$58.08	\$1.05	\$1.70	\$0.05	\$1.87	\$0.04	431,882	(4,609)	228,374	591	129,935	1,090	39,875	41	31,418	603	1,224,103	(8,792)

Commercial Crude Oil Stocks



Week Ending	WTI	Change	Production	Change	Imports	Change	Exports	Change	Capacity	Inputs	Change	Utilization	Crude Oil Stocks	Change
11/24/2017	\$57.94	\$2.24	9,682	24	w	(544)	1412	(179)	18,125	16,696	247	91.1%	453,713	(3,429)
12/1/2017	\$57.69	(\$0.25)	9,707	25	7,202	(127)	1358	(54)	18,125	16,919	223	92.2%	448,103	(5,610)
12/8/2017	\$56.99	(\$0.70)	9,780	73	7,363	161	1086	(272)	18,125	16,997	78	92.8%	442,986	(5,117)
12/15/2017	\$57.03	\$0.05	9,789	9	7,834	471	1858	772	18,125	17,053	56	93.5%	436,491	(6,495)
12/22/2017	\$58.08	\$1.05	9,754	(35)	7,993	159	1210	(648)	18,125	17,152	99	94.3%	431,882	(4,609)