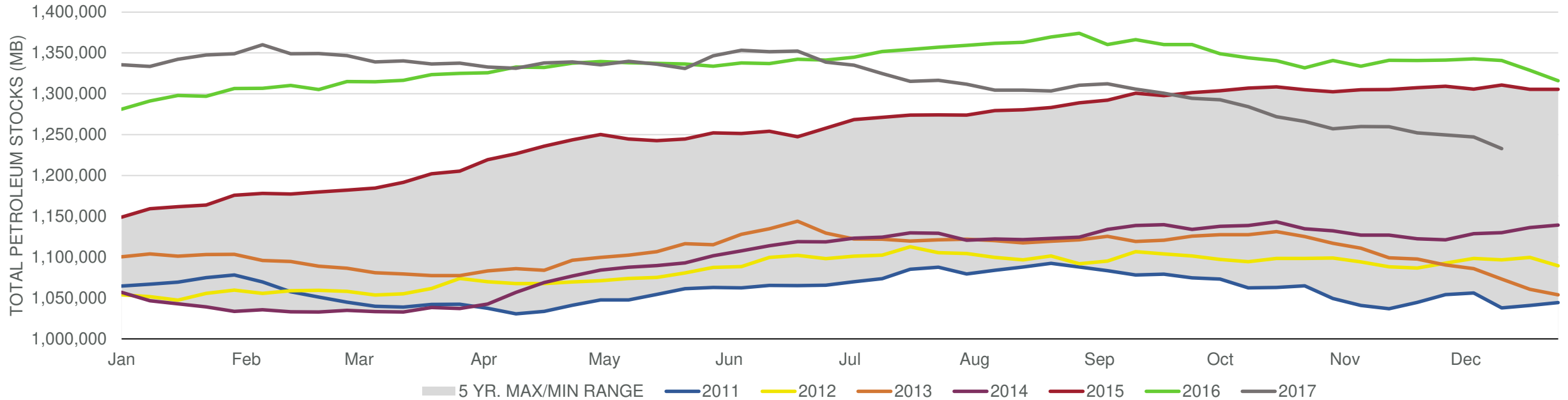


## Total Petroleum Stocks



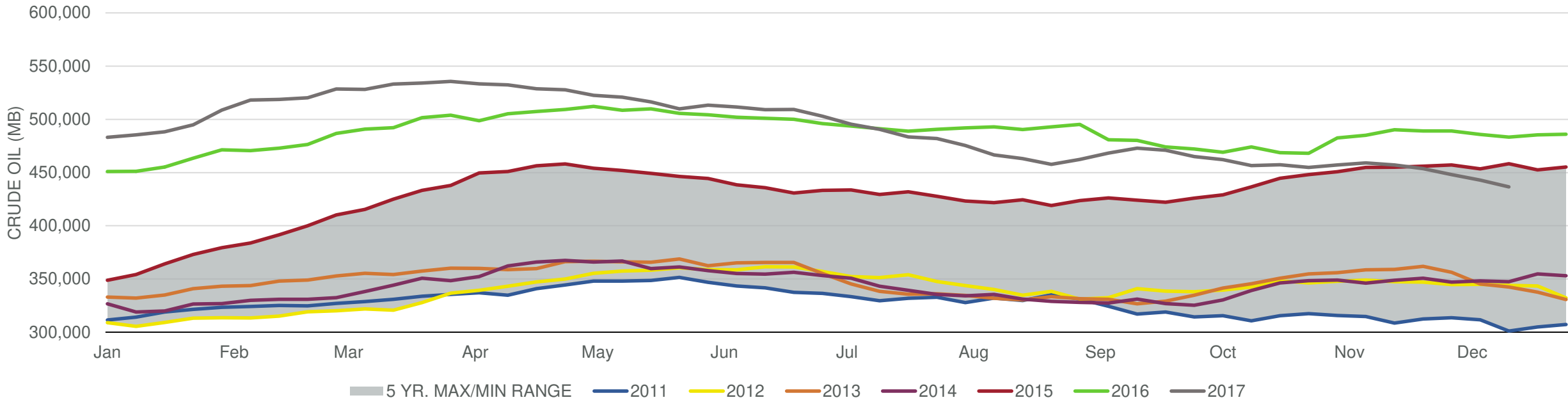
Week Ending	WTI	Change	GC Gaso	Change	NY No 2	Change	Crude	Change	Gasoline	Change	Distillate	Change	Kero	Change	Resid	Change	Total Stocks	Change
11/17/2017	\$55.81	(\$1.24)	\$1.74	(\$0.09)	\$1.81	(\$0.00)	457,142	(1,855)	210,475	44	125,032	269	41,240	852	34,133	(317)	1,259,721	(45)
11/24/2017	\$57.47	\$1.65	\$1.71	(\$0.03)	\$1.84	\$0.03	453,713	(3,429)	214,102	3,627	127,779	2,747	41,281	41	32,204	(1,929)	1,252,133	(7,588)
12/1/2017	\$57.81	\$0.34	\$1.73	\$0.02	\$1.84	(\$0.00)	448,103	(5,610)	220,882	6,780	129,446	1,667	40,267	(1,014)	31,126	(1,078)	1,249,610	(2,523)
12/8/2017	\$56.92	(\$0.90)	\$1.69	(\$0.04)	\$1.81	(\$0.03)	442,986	(5,117)	226,546	5,664	128,076	(1,370)	40,855	588	31,515	389	1,247,055	(2,555)
12/15/2017	\$57.17	\$0.25	\$1.67	(\$0.02)	\$1.84	\$0.03	436,491	(6,495)	227,783	1,237	128,845	769	39,834	(1,021)	30,815	(700)	1,232,895	(14,160)

# EIA Weekly Petroleum Status Report

Week Ending: 12/20/2017

Total Stocks: **-14,160 Mb** Crude Oil Stocks (excl. SPR): **-6,495 Mb** Production: **+9 Mbd**

## Commercial Crude Oil Stocks



Week Ending	WTI	Change	Production	Change	Imports	Change	Exports	Change	Capacity	Inputs	Change	Utilization	Crude Oil Stocks	Change
11/17/2017	\$55.81	(\$1.24)	9,658	13	7,873	(25)	1591	462	18,125	16,838	199	91.3%	457,142	(1,855)
11/24/2017	\$57.47	\$1.65	9,682	24	7,329	(544)	1412	(179)	18,125	17,003	165	92.6%	453,713	(3,429)
12/1/2017	\$57.81	\$0.34	9,707	25	7,202	(127)	1358	(54)	18,125	17,195	192	93.8%	448,103	(5,610)
12/8/2017	\$56.92	(\$0.90)	9,780	73	7,363	161	1086	(272)	18,125	16,952	(243)	93.4%	442,986	(5,117)
12/15/2017	\$57.17	\$0.25	9,789	9	7,834	471	1858	772	18,125	17,063	111	94.1%	436,491	(6,495)