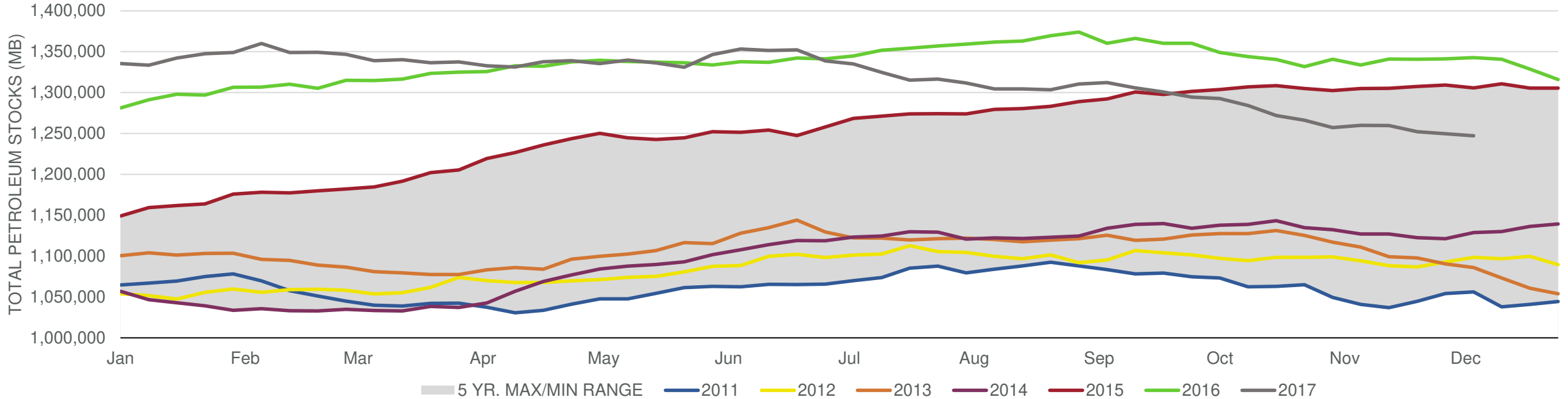
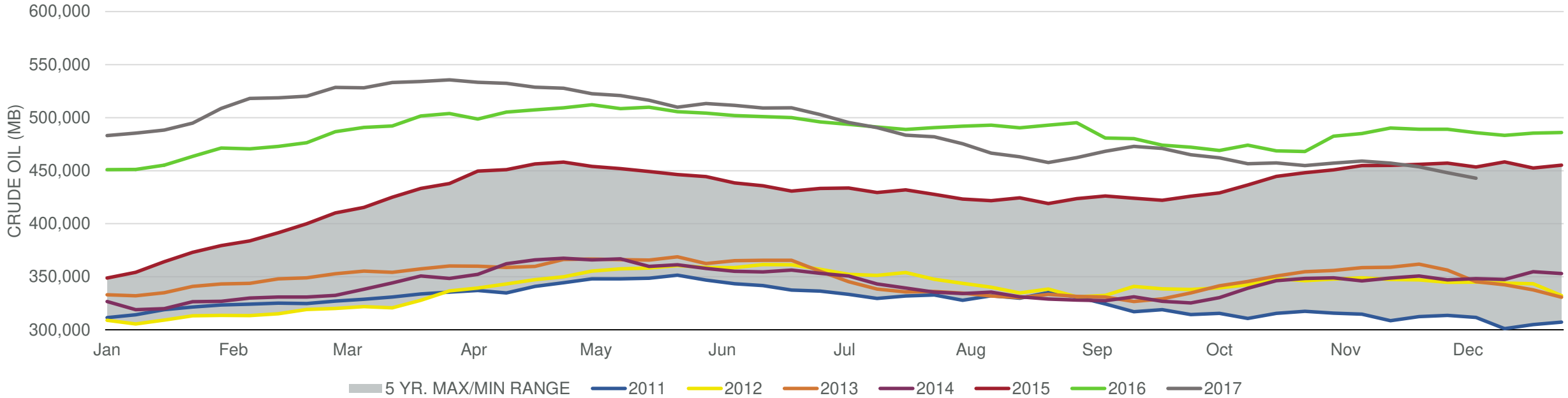


Total Petroleum Stocks



Week Ending	WTI	Change	GC Gaso	Change	NY No 2	Change	Crude	Change	Gasoline	Change	Distillate	Change	Kero	Change	Resid	Change	Total Stocks	Change
11/10/2017	\$57.05	\$2.46	\$1.83	\$0.07	\$1.82	\$0.04	458,997	1,854	210,431	894	124,763	(799)	40,388	325	34,450	1,787	1,259,766	2,757
11/17/2017	\$55.81	(\$1.24)	\$1.74	(\$0.09)	\$1.81	(\$0.00)	457,142	(1,855)	210,475	44	125,032	269	41,240	852	34,133	(317)	1,259,721	(45)
11/24/2017	\$57.47	\$1.65	\$1.71	(\$0.03)	\$1.84	\$0.03	453,713	(3,429)	214,102	3,627	127,779	2,747	41,281	41	32,204	(1,929)	1,252,133	(7,588)
12/1/2017	\$57.81	\$0.34	\$1.74	\$0.02	\$1.84	(\$0.00)	448,103	(5,610)	220,882	6,780	129,446	1,667	40,267	(1,014)	31,126	(1,078)	1,249,610	(2,523)
12/8/2017	\$56.92	(\$0.90)	\$1.69	(\$0.04)	\$1.81	(\$0.03)	442,986	(5,117)	226,546	5,664	128,076	(1,370)	40,855	588	31,515	389	1,247,055	(2,555)

Commercial Crude Oil Stocks



Week Ending	WTI	Change	Production	Change	Imports	Change	Exports	Change	Capacity	Inputs	Change	Utilization	Crude Oil Stocks	Change
11/10/2017	\$57.05	\$2.46	9,645	25	7,898	521	1129	260	18,125	16,639	334	91.0%	458,997	1,854
11/17/2017	\$55.81	(\$1.24)	9,658	13	7,873	(25)	1591	462	18,125	16,838	199	91.3%	457,142	(1,855)
11/24/2017	\$57.47	\$1.65	9,682	24	7,329	(544)	1412	(179)	18,125	17,003	165	92.6%	453,713	(3,429)
12/1/2017	\$57.81	\$0.34	9,707	25	7,202	(127)	1358	(54)	18,125	17,195	192	93.8%	448,103	(5,610)
12/8/2017	\$56.92	(\$0.90)	9,780	73	7,363	161	1086	(272)	18,125	16,952	(243)	93.4%	442,986	(5,117)