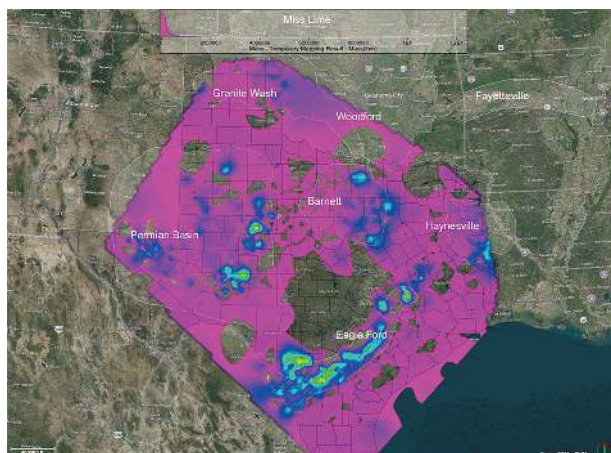


# DI ENGINEERING

**DI Engineering delivers comprehensive completion and production intelligence to help you make actionable recommendations and understand the impact of each production variable in a fraction of the time. Drillinginfo provides detailed completion data and EURs for producing entities across the United States.**

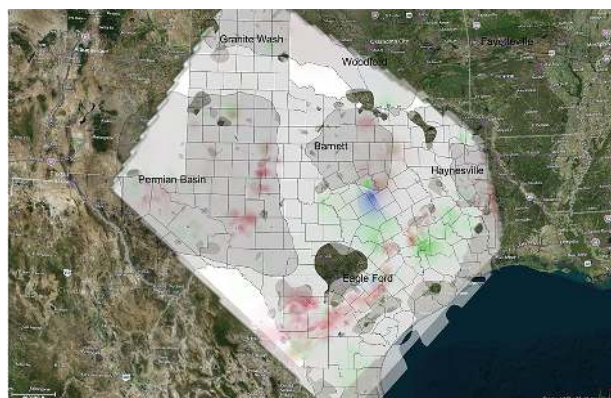
## DETAILED COMPLETION DATA

Far too often, completion data is limited to a company's proprietary records spanning a handful of wells and plays. Now, Drillinginfo provides detailed data—including proppant volume, fluid types, perforation depths, casing details, formations, and more—for multiple plays, hundreds of operators, and thousands of wells. Stop spending hours manually compiling and managing data from disparate sources, including paper-based records. DI Engineering provides comprehensive access to data from multiple states in a single location. Easily integrate the data into your internal system for further unique analysis.



## PROPRIETARY STIMULATION DATA

Maximize your completions with DI Engineering's proprietary Additive Summary data. Drillinginfo has spent years of man-hours cleansing, normalizing, integrating, and transforming publicly reported stimulation data and then applying additional algorithms to create a database of searchable information. Easily identify the names, number, calculated mass, density, trade name, supplier, and purpose proppant totals of chemicals used in the best-producing wells.



## VISUALIZE PRODUCTION AND COMPLETION INTELLIGENCE

The proprietary Explorer\* feature allows you to easily visualize production and completion data for over 130,000 wells across 14 states. Understand how operators are completing the highest producing wells, monitor operator activity, and discover hard-to-find correlations and connections between engineering and production. Leverage the proprietary, unbiased intelligence in Explorer to maximize production and ROI, value assets, and find business opportunities faster.

\*Explorer is available as an add-on to DI Engineering. Please contact your Drillinginfo representative for additional information.

**EURs**

Creating maximum value depends on accurate productivity forecasts. That’s why DI Engineering includes Estimated Ultimate Recoveries (EUR) for nearly every producing entity in the United States, enabling high-level statistical views of entire plays or regions as well as detailed predictions for individual wells. With precise projections of how much oil and gas can be produced—and advanced analysis of the best practices to recover those hydrocarbons—you will make engineering recommendations with unmatched confidence.

**FEATURES AND BENEFITS**

Feature	Benefit
Additive Summary*	Cleansed, normalized, analytics-grade frac and stimulation data including chemicals, proppant type, trade names, suppliers, etc.
Completion database export, including fracturing details	Bulk import state datasets into internal systems to analyze and interpret data, including proppant volume, fluid volume and types, etc.
Directional surveys	Simplified access to directional surveys exportable from DI Engineering FTP
Production and predicted EUR	Forecasting production volumes (all wells/producing entities) for high-level statistical views across a region or area
Explorer*	Visualize completion and production data, including correlations and best practices, down to the single-well level

\*Additive Summary is available to all-state subscribers only; Explorer is available as an add-on to DI Engineering



**PROACTIVE**



**EFFICIENT**



**COMPETITIVE**

Learn more at [www.drillinginfo.com](http://www.drillinginfo.com)

By monitoring the market, Drillinginfo continuously delivers innovative oil & gas solutions that enable our customers to sustain a competitive advantage in any environment.

Drillinginfo customers constantly perform above their competitors because they are more efficient and more proactive than the competition.