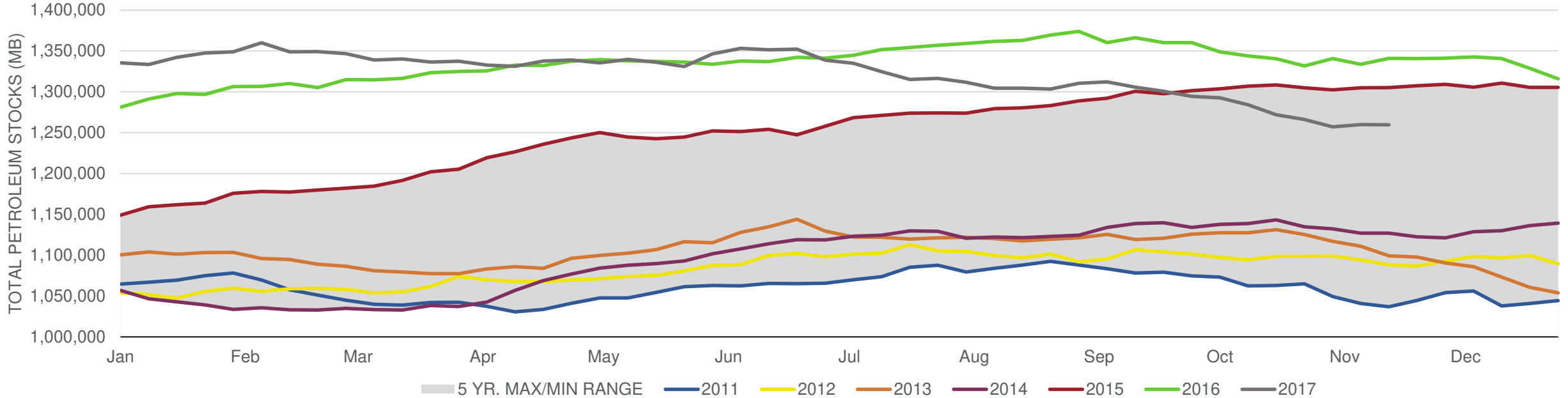
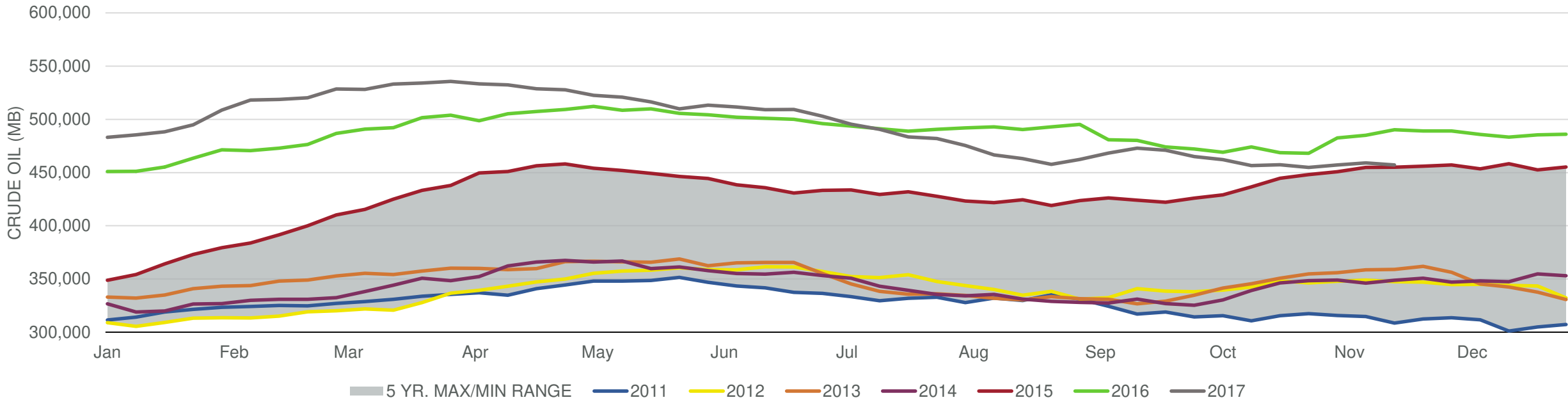


Total Petroleum Stocks



Week Ending	WTI	Change	GC Gaso	Change	NY No 2	Change	Crude	Change	Gasoline	Change	Distillate	Change	Kero	Change	Resid	Change	Total Stocks	Change
10/20/2017	\$51.74	\$0.97	\$1.65	\$0.04	\$1.71	\$0.06	457,341	856	216,869	(5,465)	129,241	(5,246)	40,770	(832)	32,143	(2,417)	1,271,858	(12,226)
10/27/2017	\$52.51	\$0.77	\$1.72	\$0.06	\$1.74	\$0.03	454,906	(2,435)	212,849	(4,020)	128,921	(320)	41,167	397	32,861	718	1,266,060	(5,798)
11/3/2017	\$54.59	\$2.09	\$1.77	\$0.05	\$1.78	\$0.04	457,143	2,237	209,537	(3,312)	125,562	(3,359)	40,063	(1,104)	32,663	(198)	1,257,009	(9,051)
11/10/2017	\$57.05	\$2.46	\$1.83	\$0.06	\$1.83	\$0.05	458,997	1,854	210,431	894	124,763	(799)	40,388	325	34,450	1,787	1,259,766	2,757
11/17/2017	\$55.81	(\$1.24)	\$1.74	(\$0.09)	\$1.82	(\$0.01)	457,142	(1,855)	210,475	44	125,032	269	41,240	852	34,133	(317)	1,259,721	(45)

Commercial Crude Oil Stocks



Week Ending	WTI	Change	Production	Change	Imports	Change	Exports	Change	Capacity	Inputs	Change	Utilization	Crude Oil Stocks	Change
10/20/2017	\$51.74	\$0.97	9,507	1,101	8,123	640	1924	126	18,125	16,025	586	87.8%	457,341	856
10/27/2017	\$52.51	\$0.77	9,553	46	7,571	(552)	2133	209	18,125	16,015	(10)	88.1%	454,906	(2,435)
11/3/2017	\$54.59	\$2.09	9,620	67	7,377	(194)	869	(1,264)	18,125	16,305	290	89.6%	457,143	2,237
11/10/2017	\$57.05	\$2.46	9,645	25	7,898	521	1129	260	18,125	16,639	334	91.0%	458,997	1,854
11/17/2017	\$55.81	(\$1.24)	9,658	13	7,873	(25)	1591	462	18,125	16,838	199	91.3%	457,142	(1,855)