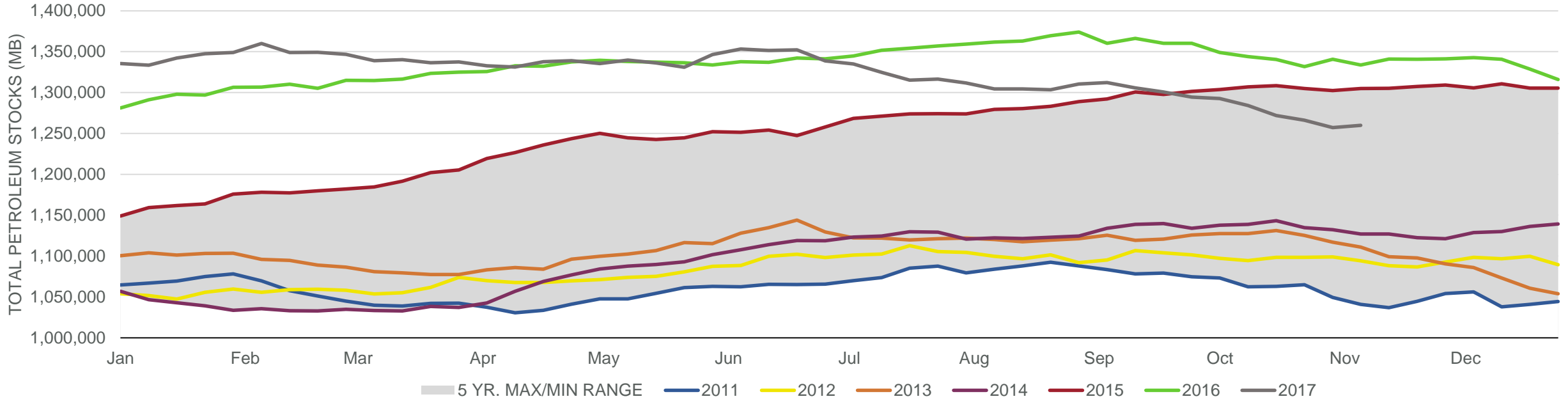


Total Petroleum Stocks



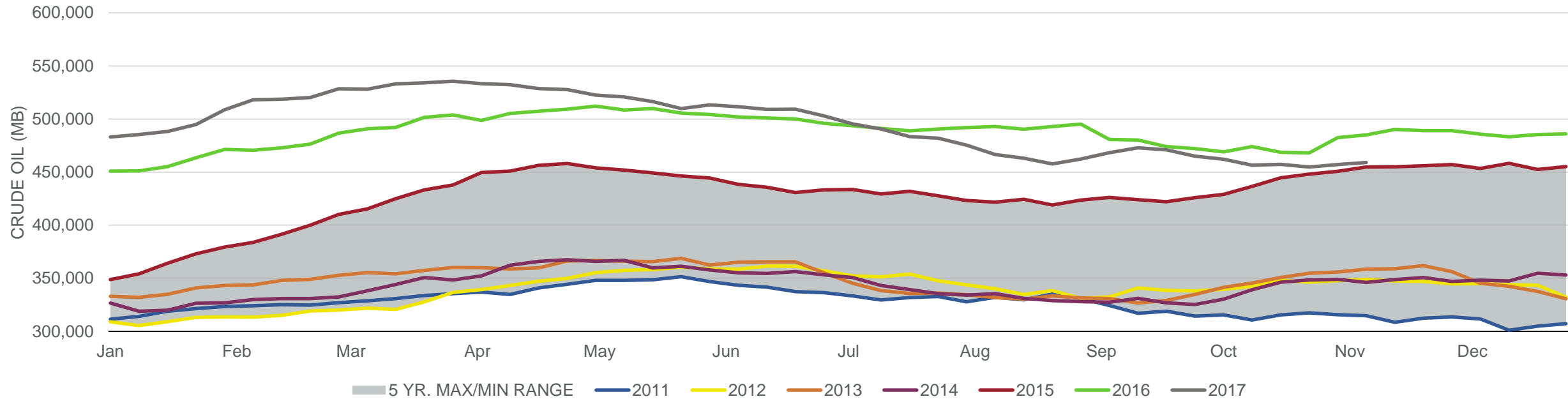
Week Ending	WTI	Change	GC Gaso	Change	NY No 2	Change	Crude	Change	Gasoline	Change	Distillate	Change	Kero	Change	Resid	Change	Total Stocks	Change
10/13/2017	\$50.77	\$0.54	\$1.61	\$0.02	\$1.65	(\$0.04)	456,485	(5,731)	222,334	908	134,487	528	41,602	(1,487)	34,560	(1,240)	1,284,084	(8,660)
10/20/2017	\$51.74	\$0.97	\$1.65	\$0.04	\$1.71	\$0.06	457,341	856	216,869	(5,465)	129,241	(5,246)	40,770	(832)	32,143	(2,417)	1,271,858	(12,226)
10/27/2017	\$52.51	\$0.77	\$1.72	\$0.06	\$1.74	\$0.03	454,906	(2,435)	212,849	(4,020)	128,921	(320)	41,167	397	32,861	718	1,266,060	(5,798)
11/3/2017	\$54.59	\$2.09	\$1.76	\$0.05	\$1.78	\$0.04	457,143	2,237	209,537	(3,312)	125,562	(3,359)	40,063	(1,104)	32,663	(198)	1,257,009	(9,051)
11/10/2017	\$57.05	\$2.46	\$1.83	\$0.07	\$1.83	\$0.05	458,997	1,854	210,431	894	124,763	(799)	40,388	325	34,450	1,787	1,259,766	2,757

EIA Weekly Petroleum Status Report

Week Ending: 11/10/2017

Total Stocks: **+2,757 Mb** Crude Oil Stocks (excl. SPR): **+1,854 Mb** Production: **+25 Mbd**

Commercial Crude Oil Stocks



Week Ending	WTI	Change	Production	Change	Imports	Change	Exports	Change	Capacity	Inputs	Change	Utilization	Crude Oil Stocks	Change
10/13/2017	\$50.77	\$0.54	8,406	(1,074)	7,483	(134)	1798	528	18,125	15,439	(819)	84.5%	456,485	(5,731)
10/20/2017	\$51.74	\$0.97	9,507	1,101	8,123	640	1924	126	18,125	16,025	586	87.8%	457,341	856
10/27/2017	\$52.51	\$0.77	9,553	46	7,571	(552)	2133	209	18,125	16,015	(10)	88.1%	454,906	(2,435)
11/3/2017	\$54.59	\$2.09	9,620	67	7,377	(194)	869	(1,264)	18,125	16,305	290	89.6%	457,143	2,237
11/10/2017	\$57.05	\$2.46	9,645	25	7,898	521	1129	260	18,125	16,639	334	91.0%	458,997	1,854