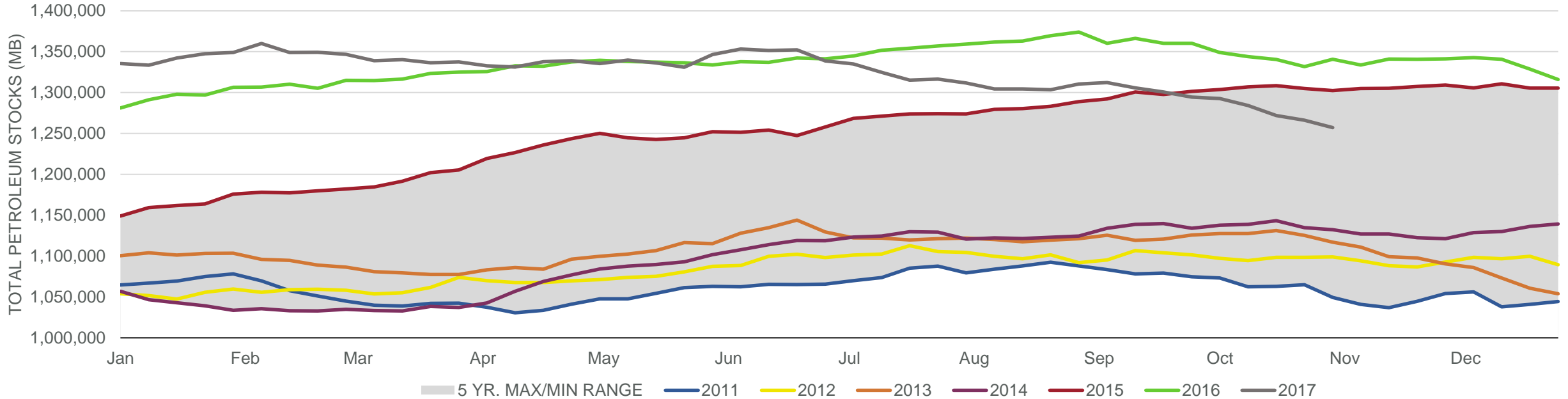
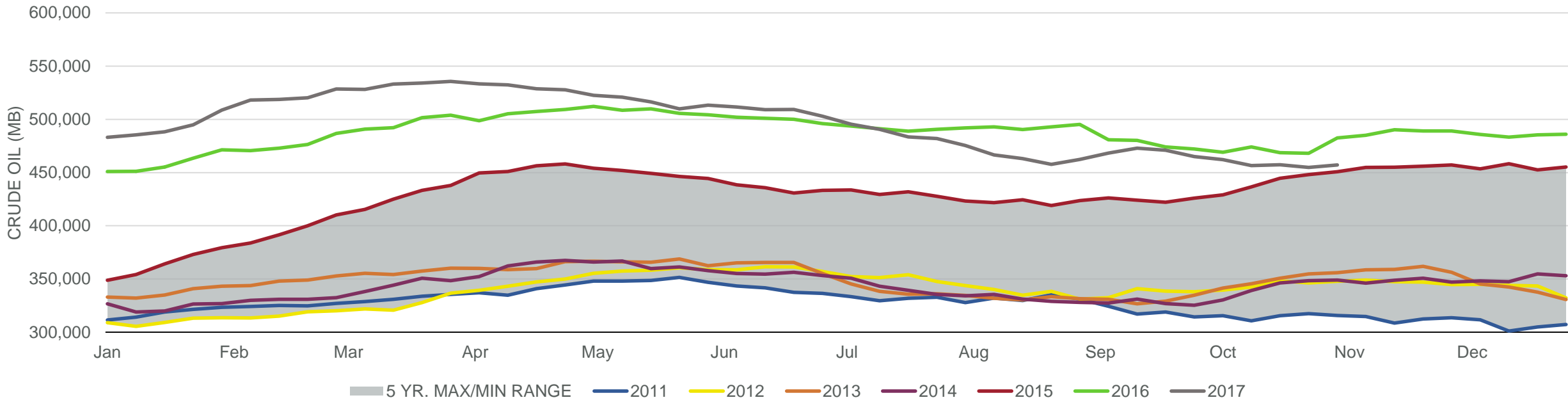


Total Petroleum Stocks



Week Ending	WTI	Change	GC Gaso	Change	NY No 2	Change	Crude	Change	Gasoline	Change	Distillate	Change	Kero	Change	Resid	Change	Total Stocks	Change
10/6/2017	\$50.23	(\$1.54)	\$1.59	(\$0.08)	\$1.69	(\$0.09)	462,216	(2,747)	221,426	2,490	133,959	(1,480)	43,089	(308)	35,800	(794)	1,292,744	(1,672)
10/13/2017	\$50.77	\$0.54	\$1.61	\$0.02	\$1.65	(\$0.04)	456,485	(5,731)	222,334	908	134,487	528	41,602	(1,487)	34,560	(1,240)	1,284,084	(8,660)
10/20/2017	\$51.74	\$0.97	\$1.65	\$0.04	\$1.71	\$0.06	457,341	856	216,869	(5,465)	129,241	(5,246)	40,770	(832)	32,143	(2,417)	1,271,858	(12,226)
10/27/2017	\$52.51	\$0.77	\$1.70	\$0.05	\$1.74	\$0.03	454,906	(2,435)	212,849	(4,020)	128,921	(320)	41,167	397	32,861	718	1,266,060	(5,798)
11/3/2017	\$54.59	\$2.09	\$1.76	\$0.06	\$1.78	\$0.04	457,143	2,237	209,537	(3,312)	125,562	(3,359)	40,063	(1,104)	32,663	(198)	1,257,009	(9,051)

Commercial Crude Oil Stocks



Week Ending	WTI	Change	Production	Change	Imports	Change	Exports	Change	Capacity	Inputs	Change	Utilization	Crude Oil Stocks	Change
10/6/2017	\$50.23	(\$1.54)	9,480	(81)	7,617	403	1270	(714)	18,125	16,258	229	89.2%	462,216	(2,747)
10/13/2017	\$50.77	\$0.54	8,406	(1,074)	7,483	(134)	1798	528	18,125	15,439	(819)	84.5%	456,485	(5,731)
10/20/2017	\$51.74	\$0.97	9,507	1,101	8,123	640	1924	126	18,125	16,025	586	87.8%	457,341	856
10/27/2017	\$52.51	\$0.77	9,553	46	7,571	(552)	2133	209	18,125	16,015	(10)	88.1%	454,906	(2,435)
11/3/2017	\$54.59	\$2.09	9,620	67	7,377	(194)	869	(1,264)	18,125	16,305	290	89.6%	457,143	2,237