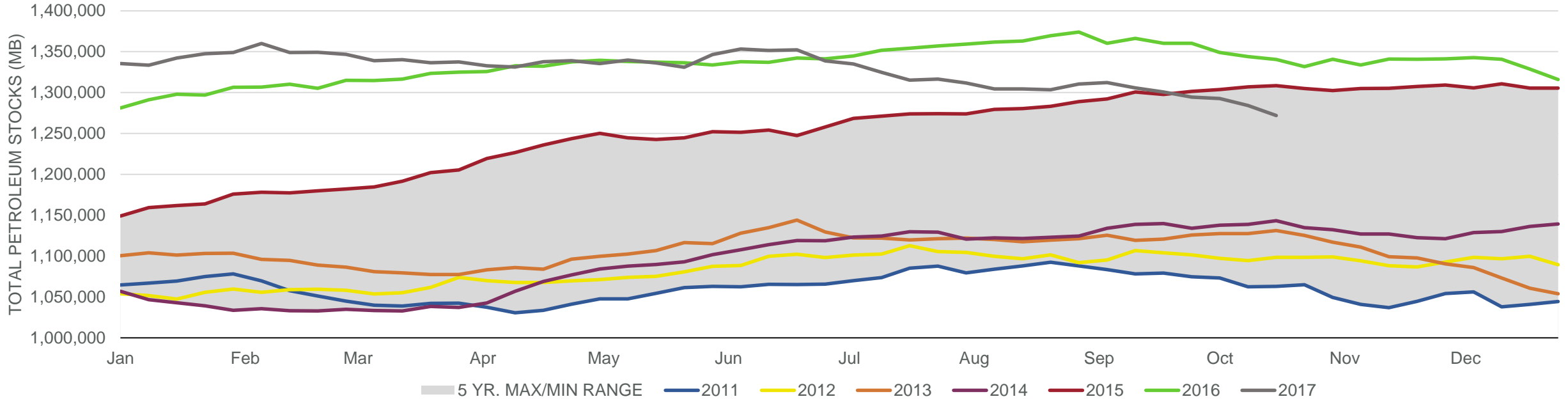


## Total Petroleum Stocks



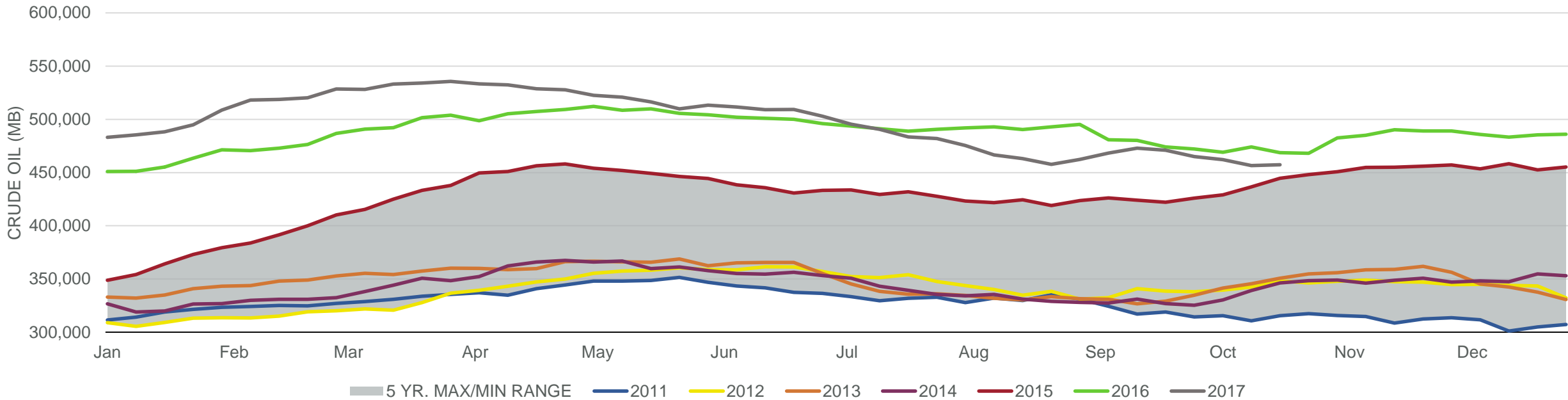
Week Ending	WTI	Change	GC Gaso	Change	NY No 2	Change	Crude	Change	Gasoline	Change	Distillate	Change	Kero	Change	Resid	Change	Total Stocks	Change
9/22/2017	\$50.12	\$1.06	\$1.68	(\$0.05)	\$1.71	\$0.04	470,986	(1,846)	217,292	1,107	138,045	(814)	41,303	929	36,257	(803)	1,300,544	(5,061)
9/29/2017	\$51.77	\$1.65	\$1.67	(\$0.00)	\$1.78	\$0.07	464,963	(6,023)	218,936	1,644	135,439	(2,606)	43,397	2,094	36,594	337	1,294,416	(6,128)
10/6/2017	\$50.23	(\$1.54)	\$1.59	(\$0.08)	\$1.69	(\$0.09)	462,216	(2,747)	221,426	2,490	133,959	(1,480)	43,089	(308)	35,800	(794)	1,292,744	(1,672)
10/13/2017	\$50.77	\$0.54	\$1.60	\$0.01	\$1.65	(\$0.04)	456,485	(5,731)	222,334	908	134,487	528	41,602	(1,487)	34,560	(1,240)	1,284,084	(8,660)
10/20/2017	\$51.74	\$0.97	\$1.65	\$0.05	\$1.71	\$0.06	457,341	856	216,869	(5,465)	129,241	(5,246)	40,770	(832)	32,143	(2,417)	1,271,858	(12,226)

# EIA Weekly Petroleum Status Report

Week Ending: 10/20/2017

Total Stocks: **-12,226 Mb** Crude Oil Stocks (excl. SPR): **+856 Mb** Production: **+1,101 Mbd**

## Commercial Crude Oil Stocks



Week Ending	WTI	Change	Production	Change	Imports	Change	Exports	Change	Capacity	Inputs	Change	Utilization	Crude Oil Stocks	Change
9/22/2017	\$50.12	\$1.06	9,547	37	7,427	59	1491	563	18,125	16,174	1,002	88.6%	470,986	(1,846)
9/29/2017	\$51.77	\$1.65	9,561	14	7,214	(213)	1984	493	18,125	16,029	(145)	88.1%	464,963	(6,023)
10/6/2017	\$50.23	(\$1.54)	9,480	(81)	7,617	403	1270	(714)	18,125	16,258	229	89.2%	462,216	(2,747)
10/13/2017	\$50.77	\$0.54	8,406	(1,074)	7,483	(134)	1798	528	18,125	15,439	(819)	84.5%	456,485	(5,731)
10/20/2017	\$51.74	\$0.97	9,507	1,101	8,123	640	1924	126	18,125	16,025	586	87.8%	457,341	856