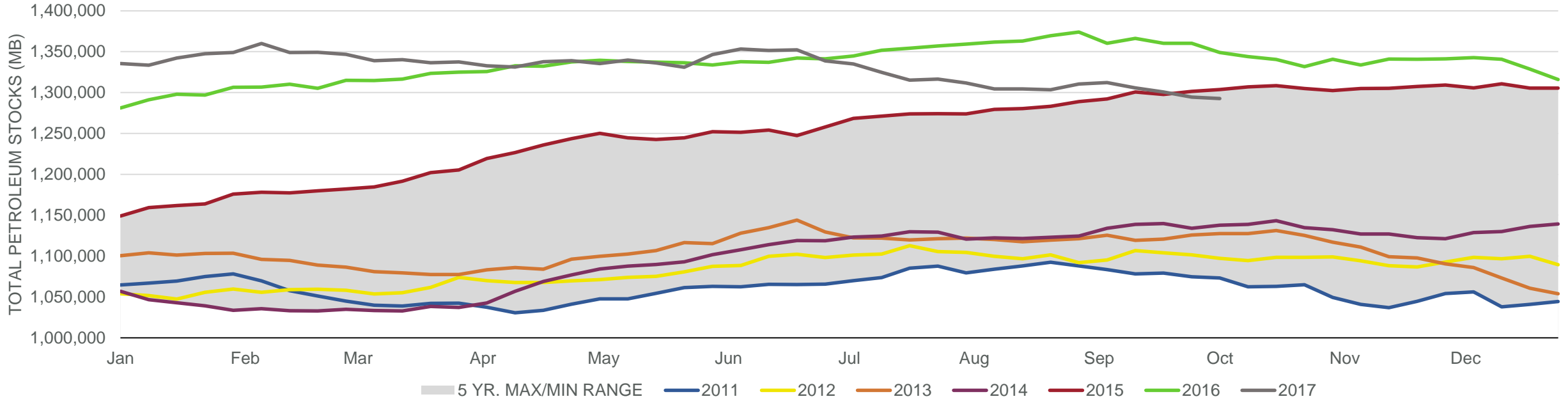


## Total Petroleum Stocks



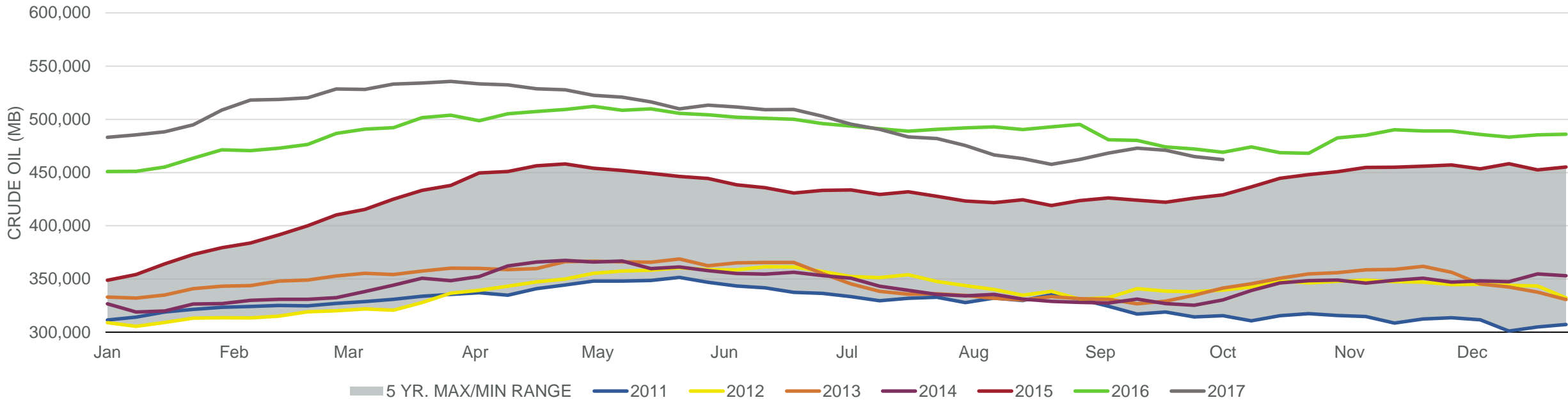
Week Ending	WTI	Change	GC Gaso	Change	NY No 2	Change	Crude	Change	Gasoline	Change	Distillate	Change	Kero	Change	Resid	Change	Total Stocks	Change
9/8/2017	\$48.47	\$1.72	\$1.83	(\$0.04)	\$1.68	\$0.10	468,241	5,888	218,310	(8,428)	144,552	(3,215)	40,368	1,234	36,042	1,399	1,312,163	1,745
9/15/2017	\$49.43	\$0.96	\$1.71	(\$0.12)	\$1.68	(\$0.00)	472,832	4,591	216,185	(2,125)	138,859	(5,693)	40,374	6	37,060	1,018	1,305,605	(6,558)
9/22/2017	\$50.52	\$1.09	\$1.68	(\$0.03)	\$1.72	\$0.04	470,986	(1,846)	217,292	1,107	138,045	(814)	41,303	929	36,257	(803)	1,300,544	(5,061)
9/29/2017	\$51.52	\$1.00	\$1.67	(\$0.01)	\$1.76	\$0.04	464,963	(6,023)	218,936	1,644	135,439	(2,606)	43,397	2,094	36,594	337	1,294,416	(6,128)
10/6/2017	\$50.03	(\$1.49)	\$1.59	(\$0.08)	\$1.68	(\$0.08)	462,216	(2,747)	221,426	2,490	133,959	(1,480)	43,089	(308)	35,800	(794)	1,292,744	(1,672)

# EIA Weekly Petroleum Status Report

Week Ending: 10/06/2017

Total Stocks: **-1,672 Mb** Crude Oil Stocks (excl. SPR): **-2,747 Mb** Production: **-81 Mbd**

## Commercial Crude Oil Stocks



Week Ending	WTI	Change	Production	Change	Imports	Change	Exports	Change	Capacity	Inputs	Change	Utilization	Crude Oil Stocks	Change
9/8/2017	\$48.47	\$1.72	9,353	572	6,480	(603)	774	621	18,125	14,078	(394)	77.7%	468,241	5,888
9/15/2017	\$49.43	\$0.96	9,510	157	7,368	888	928	154	18,125	15,172	1,094	83.2%	472,832	4,591
9/22/2017	\$50.52	\$1.09	9,547	37	7,427	59	1491	563	18,125	16,174	1,002	88.6%	470,986	(1,846)
9/29/2017	\$51.52	\$1.00	9,561	14	7,214	(213)	1984	493	18,125	16,029	(145)	88.1%	464,963	(6,023)
10/6/2017	\$50.03	(\$1.49)	9,480	(81)	7,617	403	1270	(714)	18,125	16,258	229	89.2%	462,216	(2,747)