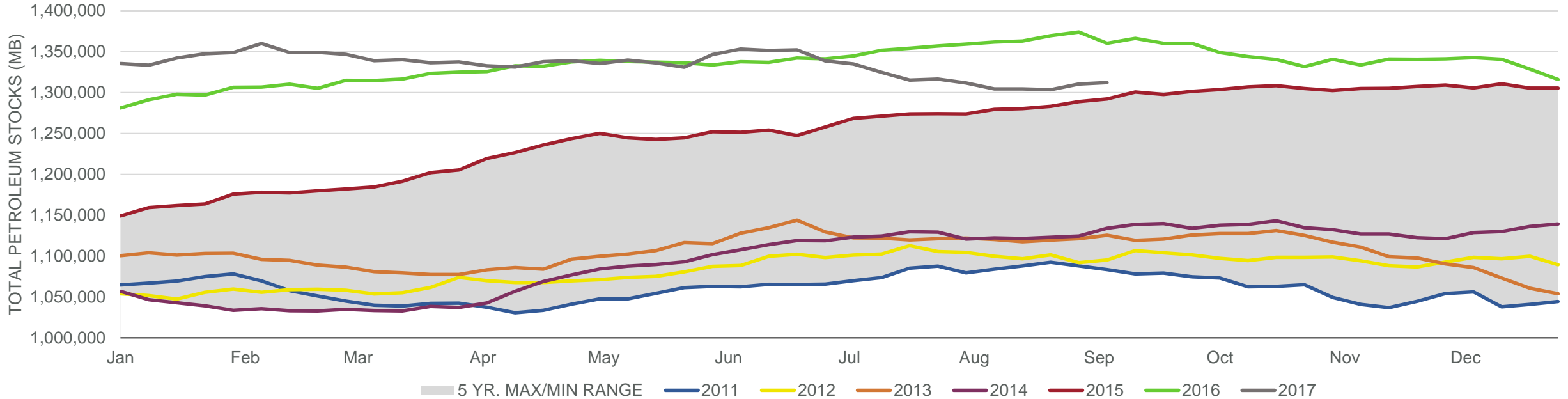


Total Petroleum Stocks



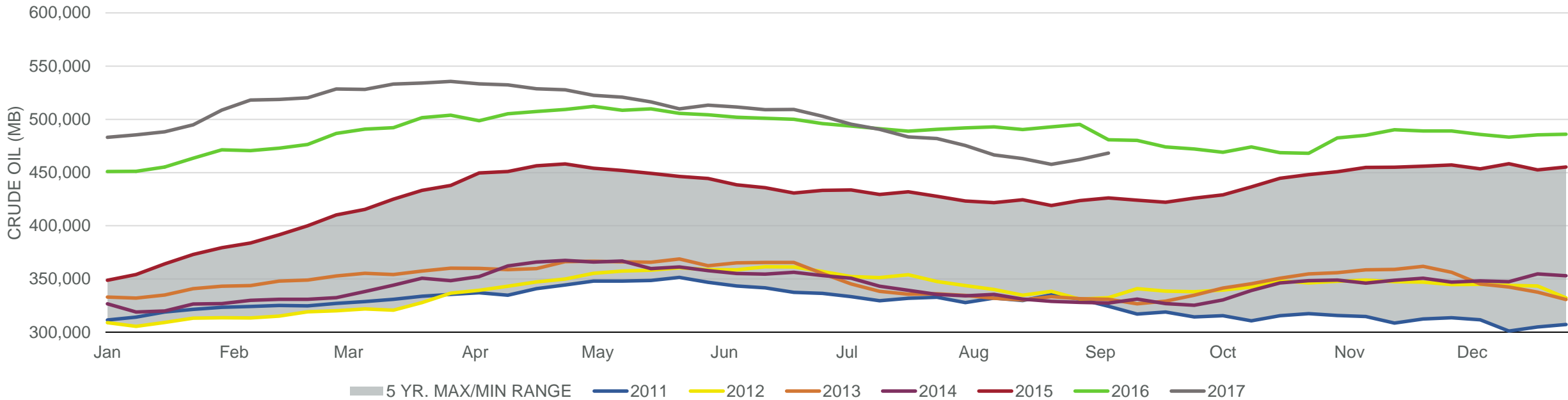
Week Ending	WTI	Change	GC Gaso	Change	NY No 2	Change	Crude	Change	Gasoline	Change	Distillate	Change	Kero	Change	Resid	Change	Total Stocks	Change
8/11/2017	\$49.08	(\$0.44)	\$1.61	(\$0.01)	\$1.53	(\$0.01)	466,492	(8,945)	231,125	22	148,387	702	39,383	(966)	33,347	(558)	1,304,453	(7,316)
8/18/2017	\$47.52	(\$1.55)	\$1.56	(\$0.04)	\$1.49	(\$0.04)	463,165	(3,327)	229,902	(1,223)	148,415	28	40,190	807	34,412	1,065	1,304,490	37
8/25/2017	\$47.68	\$0.15	\$1.59	\$0.03	\$1.50	\$0.01	457,773	(5,392)	229,937	35	149,163	748	39,348	(842)	35,456	1,044	1,303,390	(1,100)
9/1/2017	\$46.68	(\$1.00)	\$1.72	\$0.13	\$1.54	\$0.05	462,353	4,580	226,738	(3,199)	147,767	(1,396)	39,134	(214)	34,643	(813)	1,310,418	7,028
9/8/2017	\$48.58	\$1.90	\$1.93	\$0.21	\$1.69	\$0.14	468,241	5,888	218,310	(8,428)	144,552	(3,215)	40,368	1,234	36,042	1,399	1,312,163	1,745

EIA Weekly Petroleum Status Report

Week Ending: 09/08/2017

Total Stocks: **+1,745 Mb** Crude Oil Stocks (excl. SPR): **+5,888 Mb** Production: **+572 Mbd**

Commercial Crude Oil Stocks



Week Ending	WTI	Change	Production	Change	Imports	Change	Exports	Change	Capacity	Inputs	Change	Utilization	Crude Oil Stocks	Change
8/11/2017	\$49.08	(\$0.44)	9,502	79	8,126	364	877	170	18,125	17,565	(9)	96.1%	466,492	(8,945)
8/18/2017	\$47.52	(\$1.55)	9,528	26	8,790	664	936	59	18,125	17,461	(104)	95.4%	463,165	(3,327)
8/25/2017	\$47.68	\$0.15	9,530	2	7,905	(885)	902	(34)	18,125	17,725	264	96.6%	457,773	(5,392)
9/1/2017	\$46.68	(\$1.00)	8,781	(749)	7,083	(822)	153	(749)	18,125	14,472	(3,253)	79.7%	462,353	4,580
9/8/2017	\$48.58	\$1.90	9,353	572	6,480	(603)	774	621	18,125	14,078	(394)	77.7%	468,241	5,888