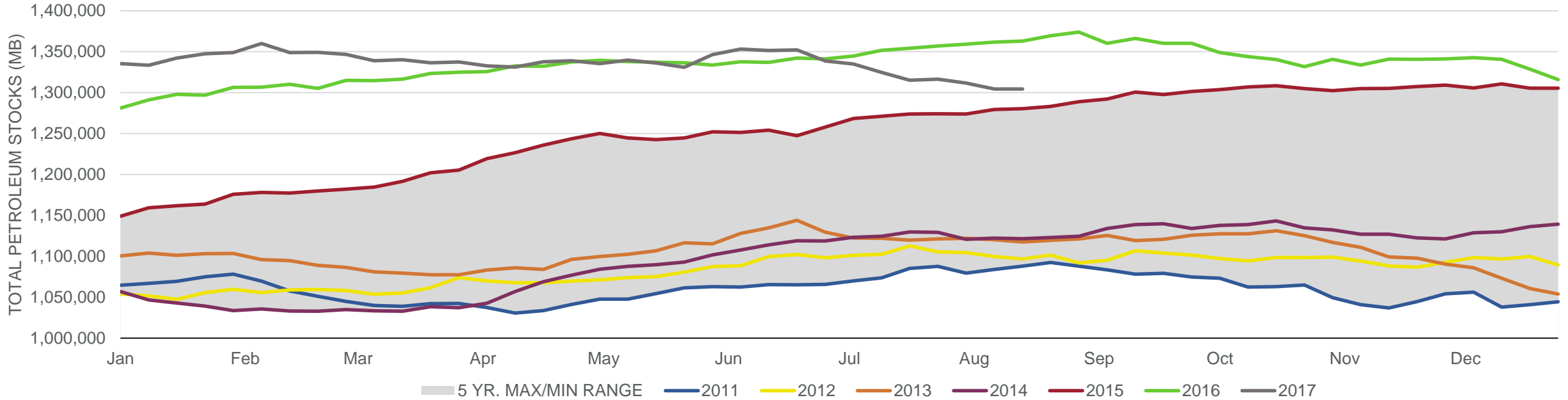


## Total Petroleum Stocks



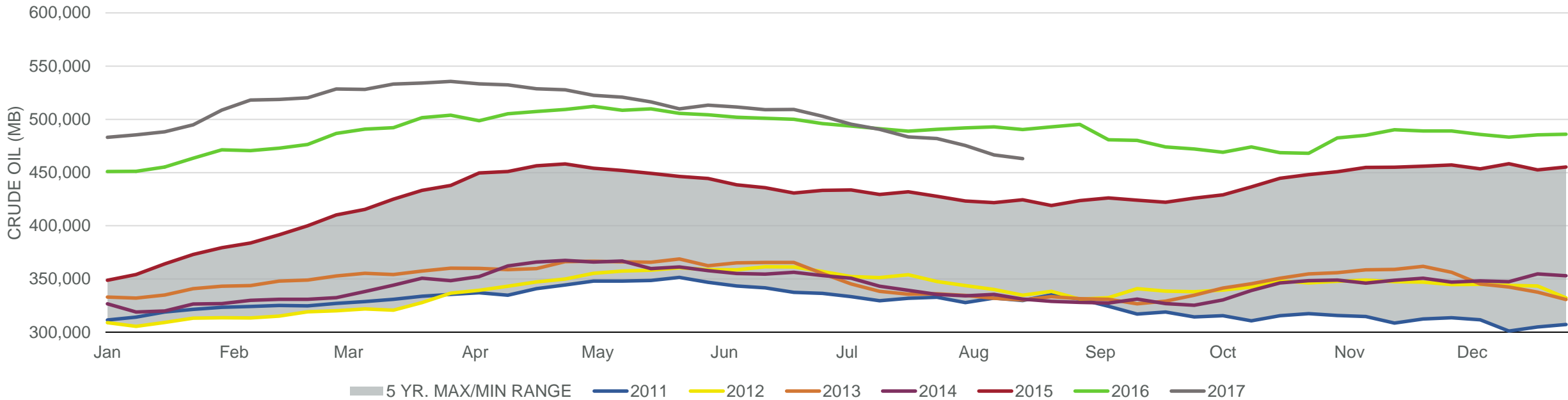
Week Ending	WTI	Change	GC Gaso	Change	NY No 2	Change	Crude	Change	Gasoline	Change	Distillate	Change	Kero	Change	Resid	Change	Total Stocks	Change
7/21/2017	\$46.41	\$0.90	\$1.53	\$0.04	\$1.42	\$0.04	483,415	(7,208)	230,196	(1,015)	149,564	(1,852)	40,151	1,001	33,839	561	1,315,276	(9,450)
7/28/2017	\$48.27	\$1.86	\$1.56	\$0.03	\$1.48	\$0.06	481,888	(1,527)	227,679	(2,517)	149,414	(150)	40,361	210	33,730	(109)	1,316,374	1,098
8/4/2017	\$49.52	\$1.25	\$1.63	\$0.07	\$1.54	\$0.06	475,437	(6,451)	231,103	3,424	147,685	(1,729)	40,349	(12)	33,905	175	1,311,769	(4,605)
8/11/2017	\$49.08	(\$0.44)	\$1.61	(\$0.02)	\$1.53	(\$0.01)	466,492	(8,945)	231,125	22	148,387	702	39,383	(966)	33,347	(558)	1,304,453	(7,316)
8/18/2017	\$47.52	(\$1.55)	\$1.56	(\$0.04)	\$1.49	(\$0.04)	463,165	(3,327)	229,902	(1,223)	148,415	28	40,190	807	34,412	1,065	1,304,490	37

# EIA Weekly Petroleum Status Report

Week Ending: 08/18/2017

Total Stocks: **+37 Mb** Crude Oil Stocks (excl. SPR): **-3,327 Mb** Production: **+26 Mbd**

## Commercial Crude Oil Stocks



Week Ending	WTI	Change	Production	Change	Imports	Change	Exports	Change	Capacity	Inputs	Change	Utilization	Crude Oil Stocks	Change
7/21/2017	\$46.41	\$0.90	9,410	(19)	8,044	48	1030	302	18,125	17,285	166	94.3%	483,415	(7,208)
7/28/2017	\$48.27	\$1.86	9,430	20	8,253	209	702	(328)	18,125	17,408	123	95.4%	481,888	(1,527)
8/4/2017	\$49.52	\$1.25	9,423	(7)	7,762	(491)	707	5	18,125	17,574	166	96.3%	475,437	(6,451)
8/11/2017	\$49.08	(\$0.44)	9,502	79	8,126	364	877	170	18,125	17,565	(9)	96.1%	466,492	(8,945)
8/18/2017	\$47.52	(\$1.55)	9,528	26	8,790	664	936	59	18,125	17,461	(104)	95.4%	463,165	(3,327)