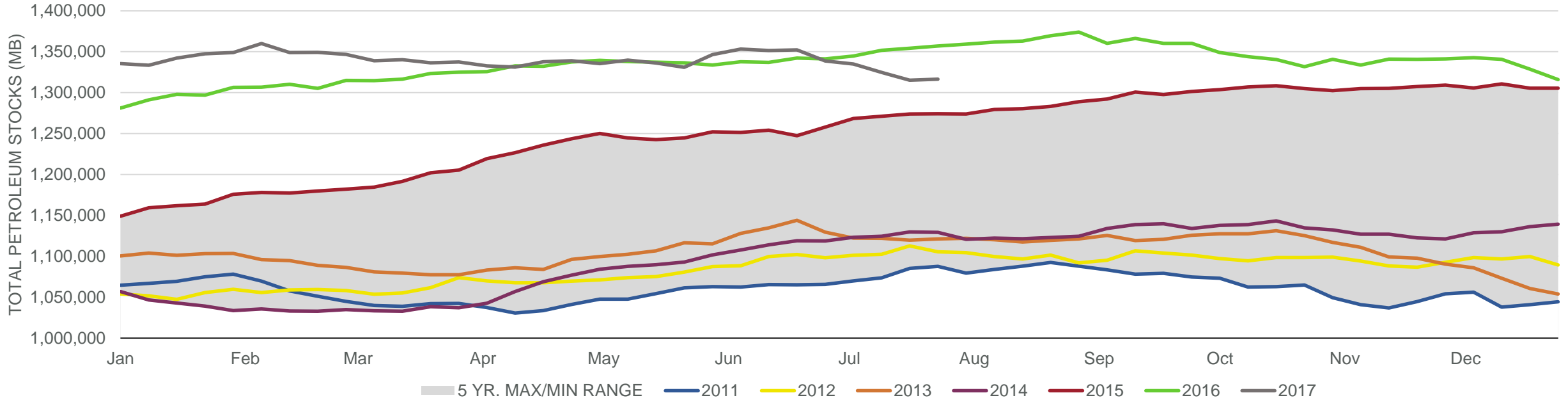
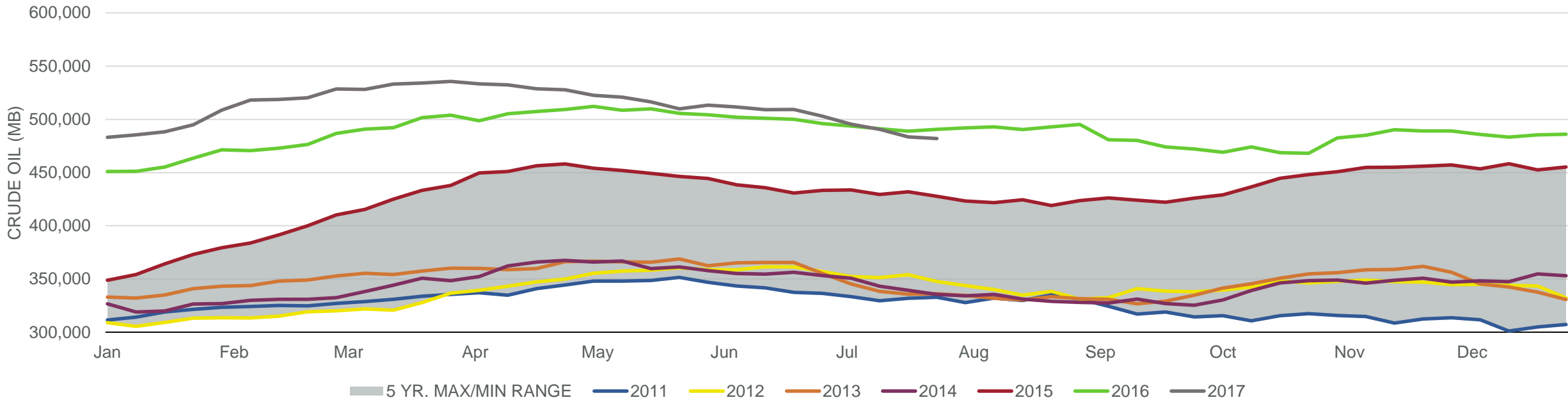


## Total Petroleum Stocks



Week Ending	WTI	Change	GC Gaso	Change	NY No 2	Change	Crude	Change	Gasoline	Change	Distillate	Change	Kero	Change	Resid	Change	Total Stocks	Change
6/30/2017	\$44.63	\$1.54	\$1.41	\$0.02	\$1.30	(\$0.01)	502,914	(6,299)	237,303	(3,669)	150,422	(1,850)	40,959	(1,440)	36,699	(1,475)	1,338,800	(13,381)
7/7/2017	\$44.96	\$0.33	\$1.46	\$0.05	\$1.37	\$0.07	495,350	(7,564)	235,656	(1,647)	153,553	3,131	40,347	(612)	34,892	(1,807)	1,334,909	(3,891)
7/14/2017	\$45.51	\$0.55	\$1.49	\$0.03	\$1.38	\$0.01	490,623	(4,727)	231,211	(4,445)	151,416	(2,137)	39,150	(1,197)	33,278	(1,614)	1,324,726	(10,183)
7/21/2017	\$46.41	\$0.90	\$1.53	\$0.04	\$1.42	\$0.04	483,415	(7,208)	230,196	(1,015)	149,564	(1,852)	40,151	1,001	33,839	561	1,315,276	(9,450)
7/28/2017	\$48.27	\$1.86	\$1.54	\$0.00	\$1.48	\$0.06	481,888	(1,527)	227,679	(2,517)	149,414	(150)	40,361	210	33,730	(109)	1,316,374	1,098

## Commercial Crude Oil Stocks



Week Ending	WTI	Change	Production	Change	Imports	Change	Exports	Change	Capacity	Inputs	Change	Utilization	Crude Oil Stocks	Change
6/30/2017	\$44.63	\$1.54	9,338	88	7,742	(274)	768	240	18,125	17,141	251	93.6%	502,914	(6,299)
7/7/2017	\$44.96	\$0.33	9,397	59	7,610	(132)	918	150	18,125	17,244	103	94.5%	495,350	(7,564)
7/14/2017	\$45.51	\$0.55	9,429	32	7,996	386	728	(190)	18,125	17,119	(125)	94.0%	490,623	(4,727)
7/21/2017	\$46.41	\$0.90	9,410	(19)	8,044	48	1030	302	18,125	17,285	166	94.3%	483,415	(7,208)
7/28/2017	\$48.27	\$1.86	9,430	20	8,253	209	702	(328)	18,125	17,408	123	95.4%	481,888	(1,527)