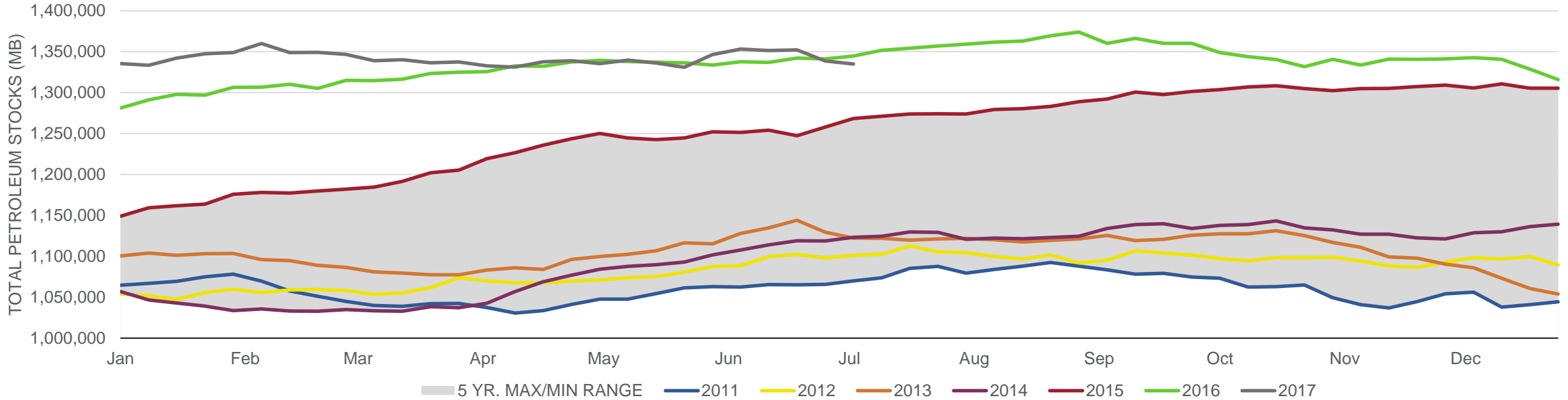


Total Petroleum Stocks



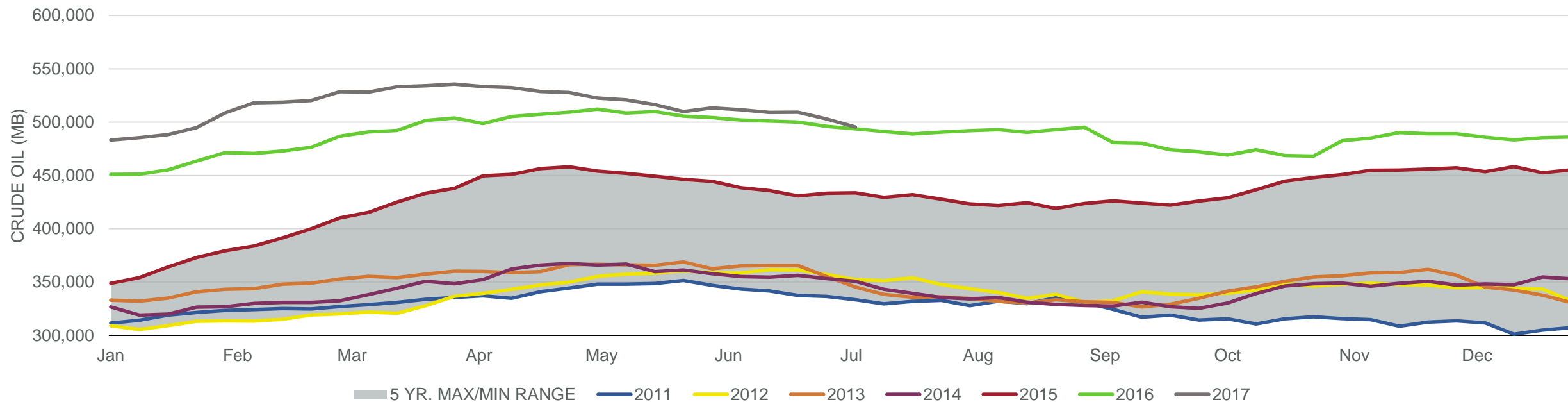
Week Ending	WTI	Change	GC Gaso	Change	NY No 2	Change	Crude	Change	Gasos	Change	Distillate	Change	Kero	Change	Resid	Change	Total Stocks	Change
6/9/2017	\$46.57	(\$1.91)	\$1.48	(\$0.07)	\$1.36	(\$0.10)	511,546	(1,661)	242,444	2,096	151,416	328	43,605	(991)	41,285	1,365	1,353,267	6,809
6/16/2017	\$45.30	(\$1.27)	\$1.42	(\$0.06)	\$1.33	(\$0.02)	509,095	(2,451)	241,866	(578)	152,495	1,079	41,684	(1,921)	40,355	(930)	1,351,352	(1,915)
6/23/2017	\$43.09	(\$2.21)	\$1.40	(\$0.02)	\$1.30	(\$0.03)	509,213	118	240,972	(894)	152,272	(223)	42,399	715	38,174	(2,181)	1,352,181	829
6/30/2017	\$44.63	\$1.54	\$1.41	\$0.01	\$1.31	\$0.01	502,914	(6,299)	237,303	(3,669)	150,422	(1,850)	40,959	(1,440)	36,699	(1,475)	1,338,800	(13,381)
7/7/2017	\$45.23	\$0.60	\$1.46	\$0.05	\$1.38	\$0.07	495,350	(7,564)	235,656	(1,647)	153,553	3,131	40,347	(612)	34,892	(1,807)	1,334,909	(3,891)

EIA Weekly Petroleum Status Report

Week Ending: 07/07/2017

Total Stocks: **-3,891 Mb** Crude Oil Stocks (excl. SPR): **-7,564** Production: **+59 Mbd**

Commercial Crude Oil Stocks



Week Ending	WTI	Change	Production	Change	Imports	Change	Exports	Change	Capacity	Inputs	Change	Utilization	Crude Oil Stocks	Change
6/9/2017	\$46.57	(\$1.91)	9,330	12	8,025	(316)	722	165	18,125	17,256	29	94.4%	511,546	(1,661)
6/16/2017	\$45.30	(\$1.27)	9,350	20	7,876	(149)	517	(205)	18,125	17,152	(104)	94.0%	509,095	(2,451)
6/23/2017	\$43.09	(\$2.21)	9,250	(100)	8,016	140	528	11	18,125	16,890	(262)	92.5%	509,213	118
6/30/2017	\$44.63	\$1.54	9,338	88	7,742	(274)	768	240	18,125	17,141	251	93.6%	502,914	(6,299)
7/7/2017	\$45.23	\$0.60	9,397	59	7,610	(132)	918	150	18,125	17,244	103	94.5%	495,350	(7,564)