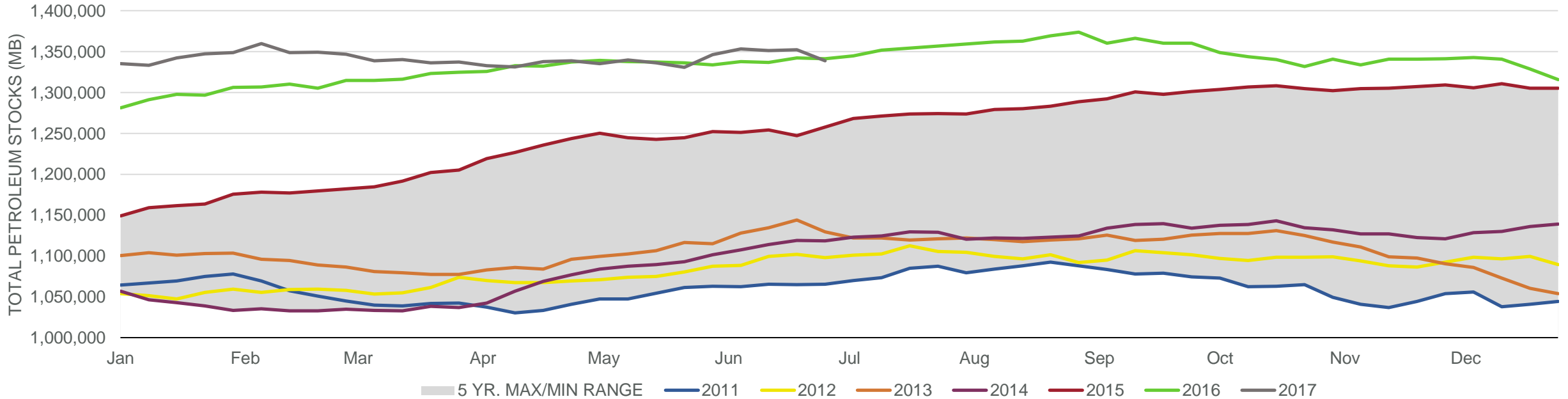
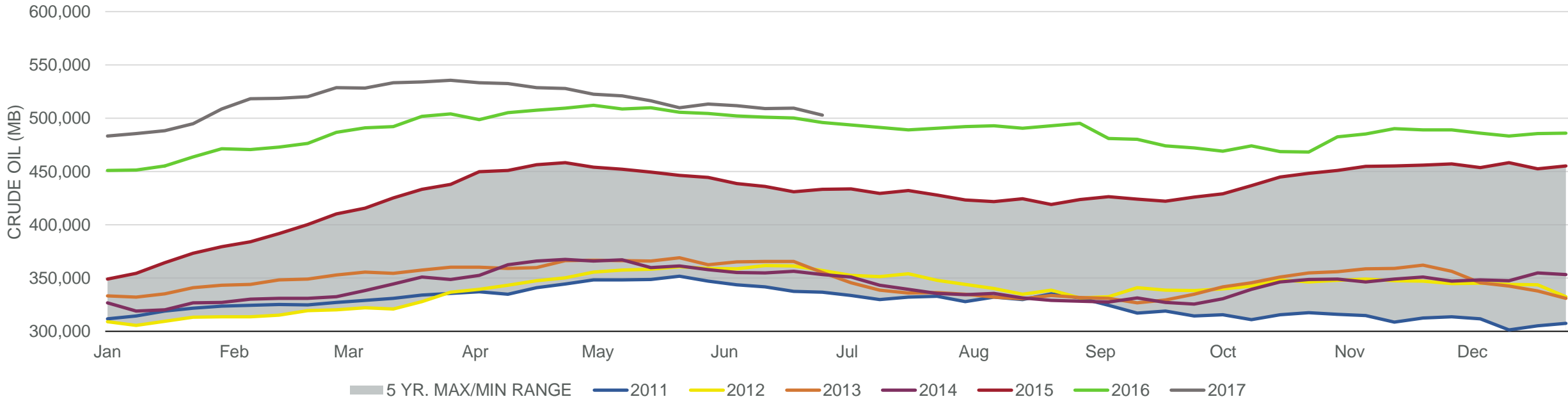


Total Petroleum Stocks



Week Ending	WTI	Change	GC Gaso	Change	NY No 2	Change	Crude	Change	Gasoline	Change	Distillate	Change	Kero	Change	Resid	Change	Total Stocks	Change
6/2/2017	\$48.26	(\$1.80)	\$1.54	(\$0.04)	\$1.45	(\$0.08)	513,207	3,295	240,348	3,324	151,088	4,355	44,596	366	39,920	1,273	1,346,458	15,471
6/9/2017	\$46.31	(\$1.96)	\$1.47	(\$0.07)	\$1.34	(\$0.10)	511,546	(1,661)	242,444	2,096	151,416	328	43,605	(991)	41,285	1,365	1,353,267	6,809
6/16/2017	\$44.93	(\$1.38)	\$1.41	(\$0.06)	\$1.33	(\$0.01)	509,095	(2,451)	241,866	(578)	152,495	1,079	41,684	(1,921)	40,355	(930)	1,351,352	(1,915)
6/23/2017	\$42.89	(\$2.04)	\$1.40	(\$0.01)	\$1.29	(\$0.04)	509,213	118	240,972	(894)	152,272	(223)	42,399	715	38,174	(2,181)	1,352,181	829
6/30/2017	\$45.18	\$2.29	\$1.41	\$0.01	\$1.33	\$0.04	502,914	(6,299)	237,303	(3,669)	150,422	(1,850)	40,959	(1,440)	36,699	(1,475)	1,338,800	(13,381)

Commercial Crude Oil Stocks



Week Ending	WTI	Change	Production	Change	Imports	Change	Exports	Change	Capacity	Inputs	Change	Utilization	Crude Oil Stocks	Change
6/2/2017	\$48.26	(\$1.80)	9,318	(24)	8,341	356	557	(746)	18,125	17,227	(283)	94.1%	513,207	3,295
6/9/2017	\$46.31	(\$1.96)	9,330	12	8,025	(316)	722	165	18,125	17,256	29	94.4%	511,546	(1,661)
6/16/2017	\$44.93	(\$1.38)	9,350	20	7,876	(149)	517	(205)	18,125	17,152	(104)	94.0%	509,095	(2,451)
6/23/2017	\$42.89	(\$2.04)	9,250	(100)	8,016	140	528	11	18,125	16,890	(262)	92.5%	509,213	118
6/30/2017	\$45.18	\$2.29	9,338	88	7,742	(274)	768	240	18,125	17,141	251	93.6%	502,914	(6,299)