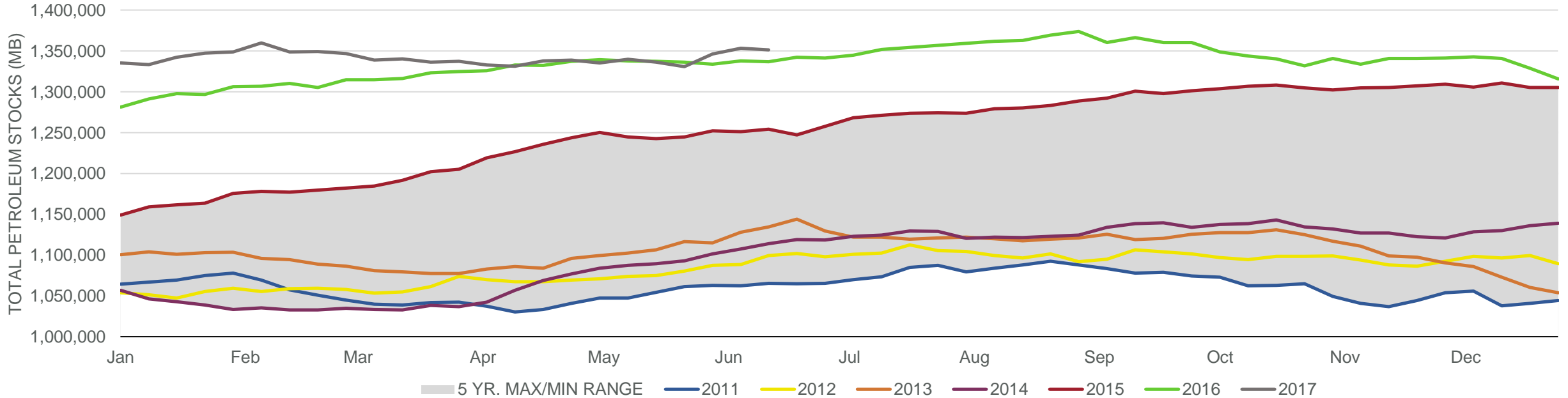


Total Petroleum Stocks



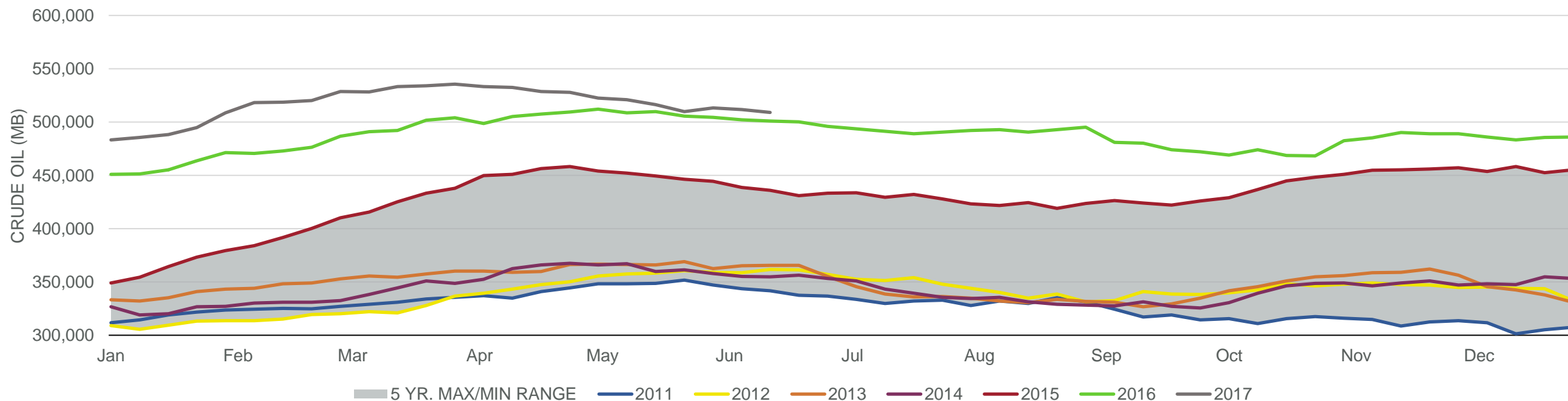
Week Ending	WTI	Change	GC Gaso	Change	NY No 2	Change	Crude	Change	Gasol	Change	Distillate	Change	Kero	Change	Resid	Change	Total Stocks	Change
5/19/2017	\$49.24	\$2.20	\$1.54	\$0.07	\$1.46	\$0.06	516,340	(4,432)	239,882	(787)	146,339	(485)	43,384	496	38,807	(988)	1,336,197	(3,504)
5/26/2017	\$50.21	\$0.97	\$1.58	\$0.05	\$1.53	\$0.06	509,912	(6,428)	237,024	(2,858)	146,733	394	44,230	846	38,647	(160)	1,330,987	(5,210)
6/2/2017	\$48.48	(\$1.73)	\$1.54	(\$0.04)	\$1.45	(\$0.08)	513,207	3,295	240,348	3,324	151,088	4,355	44,596	366	39,920	1,273	1,346,458	15,471
6/9/2017	\$46.57	(\$1.91)	\$1.48	(\$0.06)	\$1.34	(\$0.10)	511,546	(1,661)	242,444	2,096	151,416	328	43,605	(991)	41,285	1,365	1,353,267	6,809
6/16/2017	\$45.30	(\$1.27)	\$1.42	(\$0.06)	\$1.33	(\$0.01)	509,095	(2,451)	241,866	(578)	152,495	1,079	41,684	(1,921)	40,355	(930)	1,351,352	(1,915)

EIA Weekly Petroleum Status Report

Week Ending: 06/16/2017

Total Stocks: **-1,915 Mb** Crude Oil Stocks (excl. SPR): **-2,451** Production: **+20 Mbd**

Commercial Crude Oil Stocks



Week Ending	WTI	Change	Production	Change	Imports	Change	Exports	Change	Capacity	Inputs	Change	Utilization	Crude Oil Stocks	Change
5/19/2017	\$49.24	\$2.20	9,320	15	8,294	(296)	625	(461)	18,125	17,281	159	93.5%	516,340	(4,432)
5/26/2017	\$50.21	\$0.97	9,342	22	7,985	(309)	1303	678	18,125	17,510	229	95.0%	509,912	(6,428)
6/2/2017	\$48.48	(\$1.73)	9,318	(24)	8,341	356	557	(746)	18,125	17,227	(283)	94.1%	513,207	3,295
6/9/2017	\$46.57	(\$1.91)	9,330	12	8,025	(316)	722	165	18,125	17,256	29	94.4%	511,546	(1,661)
6/16/2017	\$45.30	(\$1.27)	9,350	20	7,876	(149)	517	(205)	18,125	17,152	(104)	94.0%	509,095	(2,451)