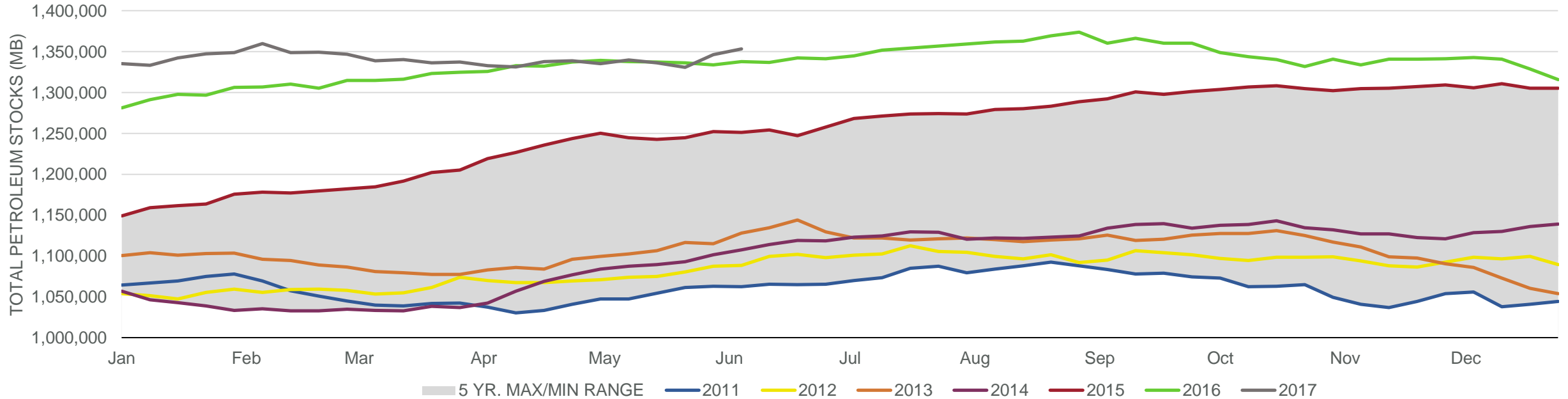
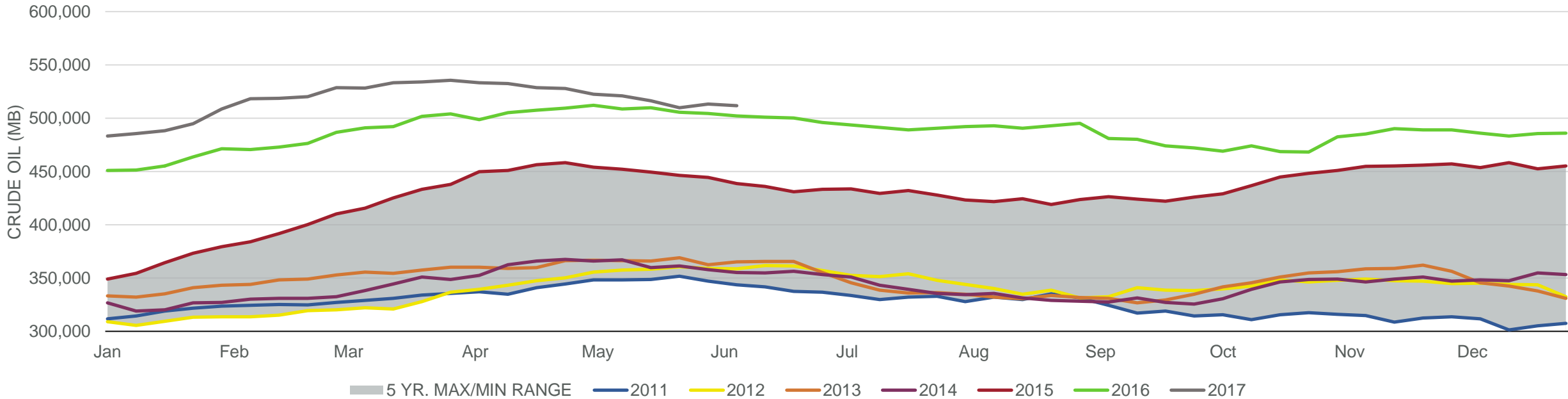


Total Petroleum Stocks



Week Ending	WTI	Change	GC Gaso	Change	NY No 2	Change	Crude	Change	Gaso	Change	Distillate	Change	Kero	Change	Resid	Change	Total Stocks	Change
5/12/2017	\$47.04	(\$0.17)	\$1.47	\$0.01	\$1.41	\$0.00	520,772	(1,753)	240,669	(413)	146,824	(1,944)	42,888	(1,256)	39,795	1,429	1,339,701	4,268
5/19/2017	\$49.24	\$2.20	\$1.54	\$0.07	\$1.46	\$0.06	516,340	(4,432)	239,882	(787)	146,339	(485)	43,384	496	38,807	(988)	1,336,197	(3,504)
5/26/2017	\$50.21	\$0.97	\$1.58	\$0.05	\$1.53	\$0.06	509,912	(6,428)	237,024	(2,858)	146,733	394	44,230	846	38,647	(160)	1,330,987	(5,210)
6/2/2017	\$48.48	(\$1.73)	\$1.54	(\$0.04)	\$1.45	(\$0.08)	513,207	3,295	240,348	3,324	151,088	4,355	44,596	366	39,920	1,273	1,346,458	15,471
6/9/2017	\$46.57	(\$1.91)	\$1.48	(\$0.07)	\$1.34	(\$0.10)	511,546	(1,661)	242,444	2,096	151,416	328	43,605	(991)	41,285	1,365	1,353,267	6,809

Commercial Crude Oil Stocks



Week Ending	WTI	Change	Production	Change	Imports	Change	Exports	Change	Capacity	Inputs	Change	Utilization	Crude Oil Stocks	Change
5/12/2017	\$47.04	(\$0.17)	9,305	(9)	8,590	970	1086	393	18,125	17,122	363	93.4%	520,772	(1,753)
5/19/2017	\$49.24	\$2.20	9,320	15	8,294	(296)	625	(461)	18,125	17,281	159	93.5%	516,340	(4,432)
5/26/2017	\$50.21	\$0.97	9,342	22	7,985	(309)	1303	678	18,125	17,510	229	95.0%	509,912	(6,428)
6/2/2017	\$48.48	(\$1.73)	9,318	(24)	8,341	356	557	(746)	18,125	17,227	(283)	94.1%	513,207	3,295
6/9/2017	\$46.57	(\$1.91)	9,330	12	8,025	(316)	722	165	18,125	17,256	29	94.4%	511,546	(1,661)