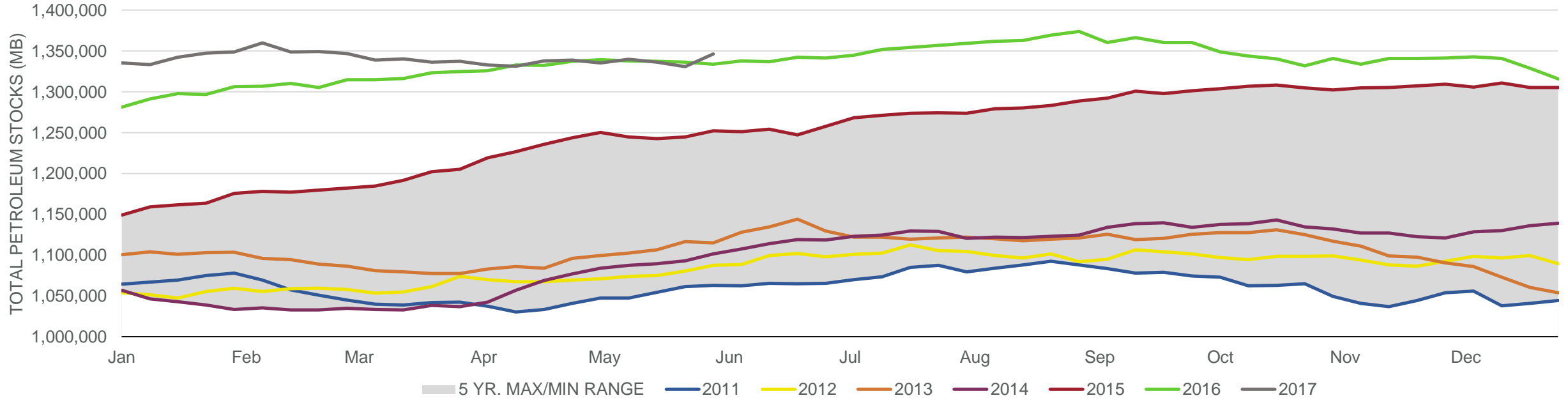


## Total Petroleum Stocks



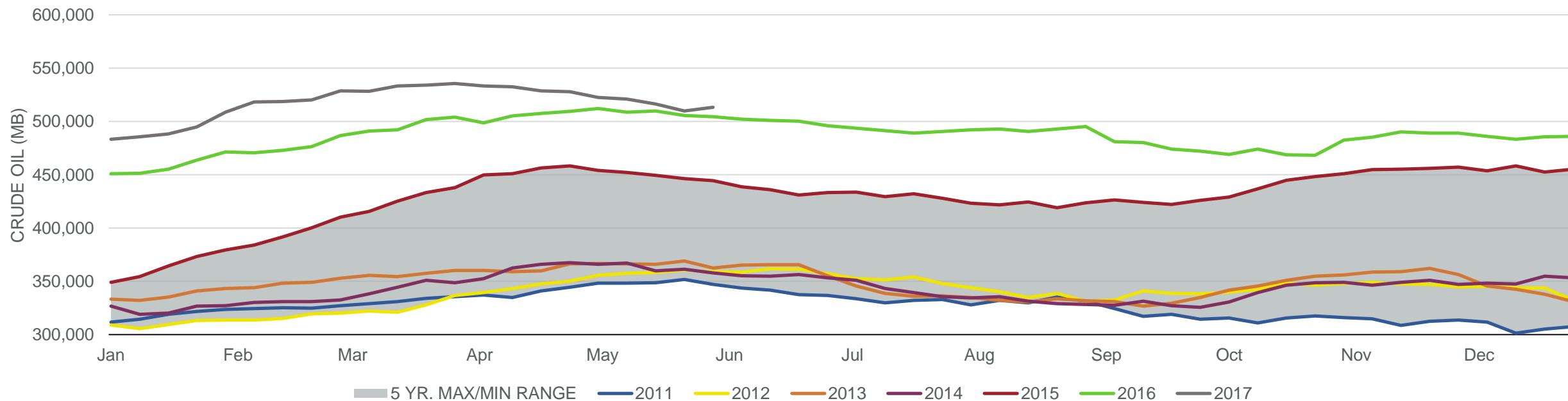
Week Ending	WTI	Change	GC Gaso	Change	NY No 2	Change	Crude	Change	Gasoline	Change	Distillate	Change	Kero	Change	Resid	Change	Total Stocks	Change
5/5/2017	\$47.21	(\$1.91)	\$1.46	(\$0.09)	\$1.40	(\$0.07)	522,525	(5,247)	241,082	(150)	148,768	(1,587)	44,144	782	38,366	(1,075)	1,335,433	(3,564)
5/12/2017	\$47.04	(\$0.17)	\$1.47	\$0.01	\$1.41	\$0.00	520,772	(1,753)	240,669	(413)	146,824	(1,944)	42,888	(1,256)	39,795	1,429	1,339,701	4,268
5/19/2017	\$49.24	\$2.20	\$1.54	\$0.07	\$1.46	\$0.06	516,340	(4,432)	239,882	(787)	146,339	(485)	43,384	496	38,807	(988)	1,336,197	(3,504)
5/26/2017	\$50.21	\$0.97	\$1.58	\$0.05	\$1.53	\$0.06	509,912	(6,428)	237,024	(2,858)	146,733	394	44,230	846	38,647	(160)	1,330,987	(5,210)
6/2/2017	\$48.48	(\$1.73)	\$1.54	(\$0.04)	\$1.45	(\$0.08)	513,207	3,295	240,348	3,324	151,088	4,355	44,596	366	39,920	1,273	1,346,458	15,471

# EIA Weekly Petroleum Status Report

Week Ending: 06/02/2017

Total Stocks: **+15,471 Mb** Crude Oil Stocks (excl. SPR): **+3,295** Production: **-24 Mbd**

## Commercial Crude Oil Stocks



Week Ending	WTI	Change	Production	Change	Imports	Change	Exports	Change	Capacity	Inputs	Change	Utilization	Crude Oil Stocks	Change
5/5/2017	\$47.21	(\$1.91)	9,314	21	7,620	(644)	693	155	18,125	16,759	(418)	91.5%	522,525	(5,247)
5/12/2017	\$47.04	(\$0.17)	9,305	(9)	8,590	970	1086	393	18,125	17,122	363	93.4%	520,772	(1,753)
5/19/2017	\$49.24	\$2.20	9,320	15	8,294	(296)	625	(461)	18,125	17,281	159	93.5%	516,340	(4,432)
5/26/2017	\$50.21	\$0.97	9,342	22	7,985	(309)	1303	678	18,125	17,510	229	95.0%	509,912	(6,428)
6/2/2017	\$48.48	(\$1.73)	9,318	(24)	8,341	356	557	(746)	18,125	17,227	(283)	94.1%	513,207	3,295