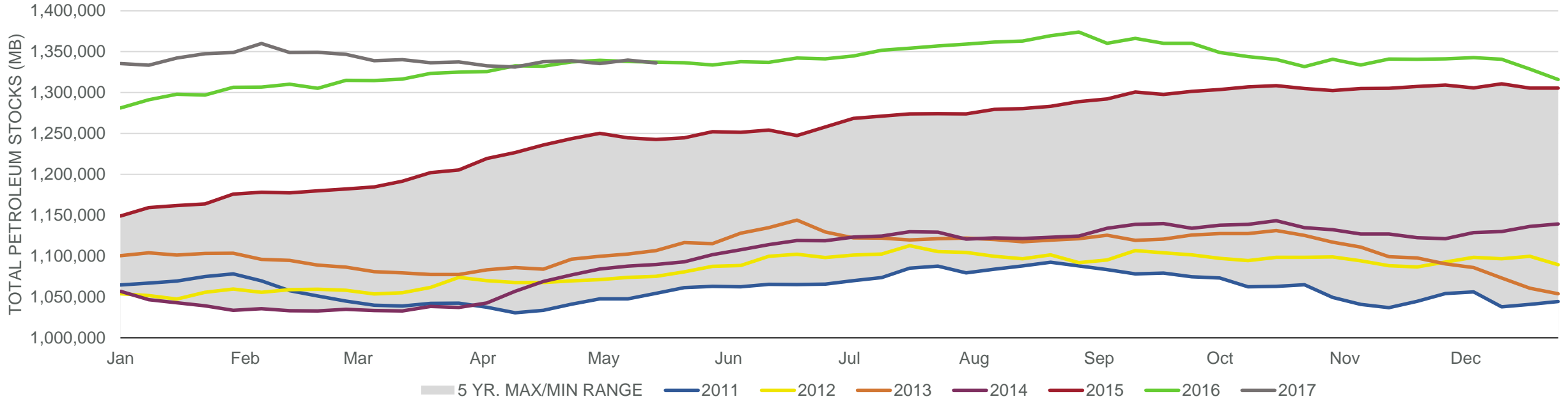
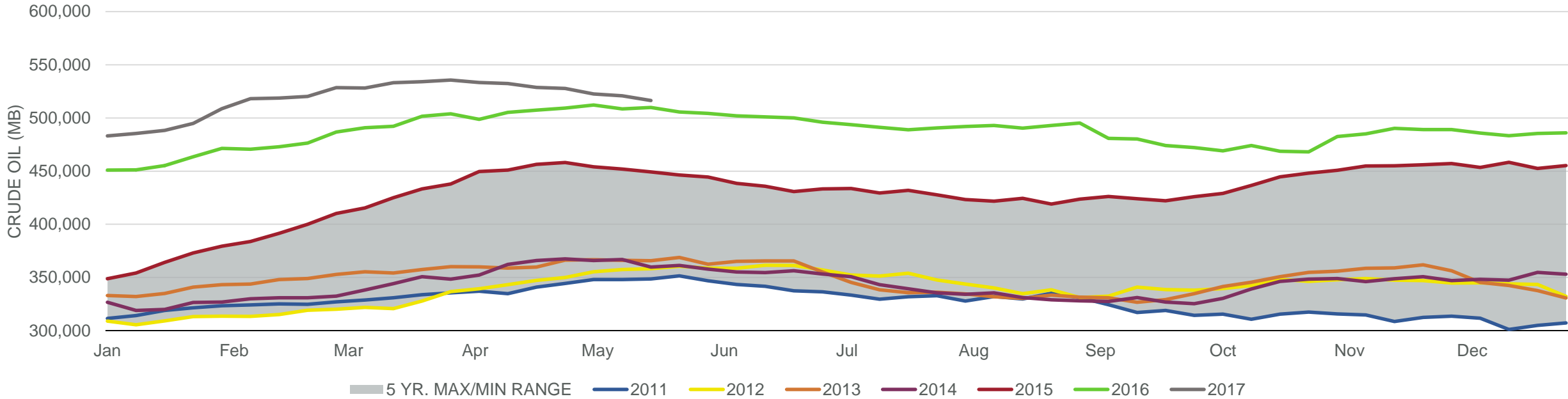


Total Petroleum Stocks



Week Ending	WTI	Change	GC Gaso	Change	NY No 2	Change	Crude	Change	Gaso	Change	Distillate	Change	Kero	Change	Resid	Change	Total Stocks	Change
4/21/2017	\$51.09	(\$1.91)	\$1.62	(\$0.07)	\$1.53	(\$0.06)	528,702	(3,641)	241,041	3,369	150,917	2,651	44,179	1,587	39,226	442	1,337,686	6,615
4/28/2017	\$49.12	(\$1.97)	\$1.53	(\$0.08)	\$1.46	(\$0.07)	527,772	(930)	241,232	191	150,355	(562)	43,362	(817)	39,441	215	1,338,997	1,311
5/5/2017	\$47.21	(\$1.91)	\$1.45	(\$0.08)	\$1.39	(\$0.07)	522,525	(5,247)	241,082	(150)	148,768	(1,587)	44,144	782	38,366	(1,075)	1,335,433	(3,564)
5/12/2017	\$47.04	(\$0.17)	\$1.47	\$0.02	\$1.42	\$0.02	520,772	(1,753)	240,669	(413)	146,824	(1,944)	42,888	(1,256)	39,795	1,429	1,339,701	4,268
5/19/2017	\$49.24	\$2.20	\$1.54	\$0.07	\$1.48	\$0.06	516,340	(4,432)	239,882	(787)	146,339	(485)	43,384	496	38,807	(988)	1,336,197	(3,504)

Commercial Crude Oil Stocks



Week Ending	WTI	Change	Production	Change	Imports	Change	Exports	Change	Capacity	Inputs	Change	Utilization	Crude Oil Stocks	Change
4/21/2017	\$51.09	(\$1.91)	9,265	13	8,912	1,102	1152	587	18,125	17,285	347	94.1%	528,702	(3,641)
4/28/2017	\$49.12	(\$1.97)	9,293	28	8,264	(648)	538	(614)	18,125	17,177	(108)	93.3%	527,772	(930)
5/5/2017	\$47.21	(\$1.91)	9,314	21	7,620	(644)	693	155	18,125	16,759	(418)	91.5%	522,525	(5,247)
5/12/2017	\$47.04	(\$0.17)	9,305	(9)	8,590	970	1086	393	18,125	17,122	363	93.4%	520,772	(1,753)
5/19/2017	\$49.24	\$2.20	9,320	15	8,294	(296)	625	(461)	18,125	17,281	159	93.5%	516,340	(4,432)