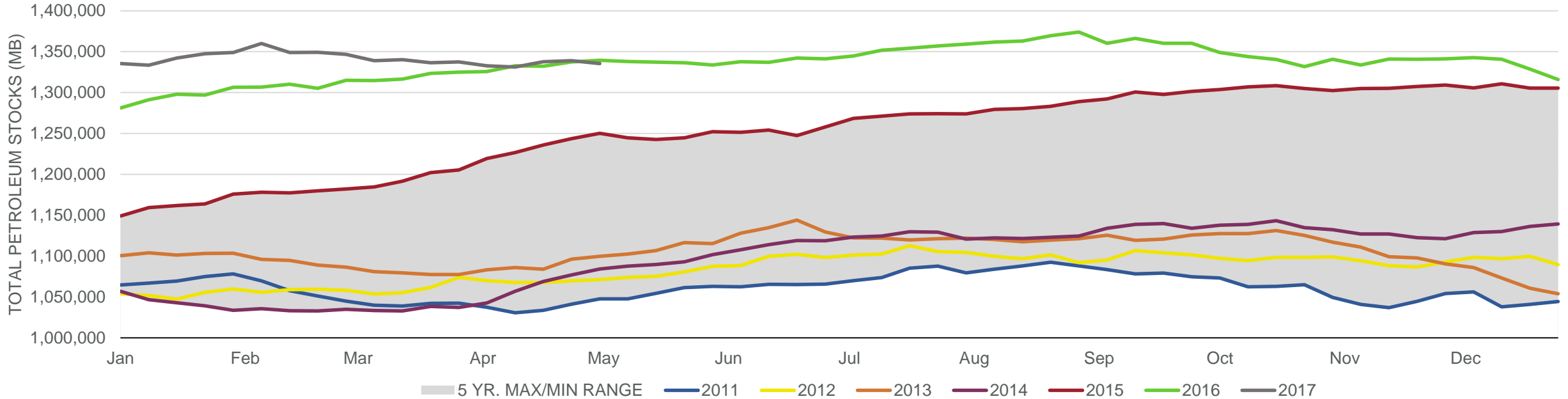
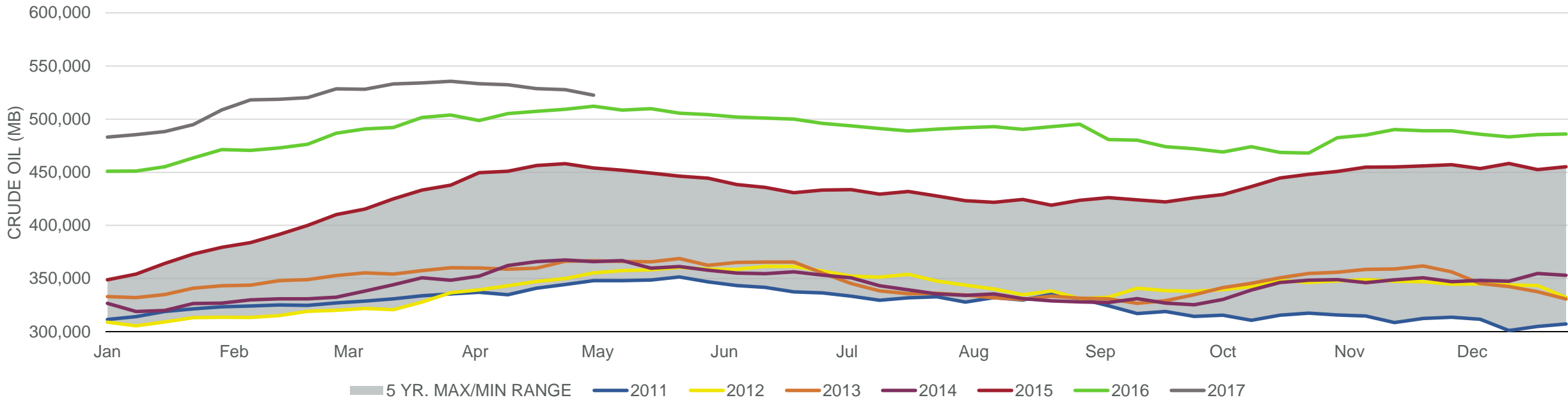


## Total Petroleum Stocks



Week Ending	WTI	Change	GC Gaso	Change	NY No 2	Change	Crude	Change	Gasoline	Change	Distillate	Change	Kero	Change	Resid	Change	Total Stocks	Change
4/7/2017	\$50.92	\$2.43	\$1.65	\$0.08	\$1.50	\$0.02	533,377	(2,166)	236,130	(2,973)	150,221	(2,153)	42,524	465	40,145	534	1,332,732	(4,710)
4/14/2017	\$53.00	\$2.08	\$1.68	\$0.03	\$1.59	\$0.08	532,343	(1,034)	237,672	1,542	148,266	(1,955)	42,592	68	38,784	(1,361)	1,331,071	(1,661)
4/21/2017	\$51.09	(\$1.91)	\$1.62	(\$0.07)	\$1.53	(\$0.06)	528,702	(3,641)	241,041	3,369	150,917	2,651	44,179	1,587	39,226	442	1,337,686	6,615
4/28/2017	\$49.12	(\$1.97)	\$1.55	(\$0.07)	\$1.46	(\$0.07)	527,772	(930)	241,232	191	150,355	(562)	43,362	(817)	39,441	215	1,338,997	1,311
5/5/2017	\$47.21	(\$1.91)	\$1.46	(\$0.09)	\$1.39	(\$0.07)	522,525	(5,247)	241,082	(150)	148,768	(1,587)	44,144	782	38,366	(1,075)	1,335,433	(3,564)

## Commercial Crude Oil Stocks



Week Ending	WTI	Change	Production	Change	Imports	Change	Exports	Change	Capacity	Inputs	Change	Utilization	Crude Oil Stocks	Change
4/7/2017	\$50.92	\$2.43	9,235	36	7,878	28	689	114	18,125	16,697	268	91.0%	533,377	(2,166)
4/14/2017	\$53.00	\$2.08	9,252	17	7,810	(68)	565	(124)	18,125	16,938	241	92.9%	532,343	(1,034)
4/21/2017	\$51.09	(\$1.91)	9,265	13	8,912	1,102	1152	587	18,125	17,285	347	94.1%	528,702	(3,641)
4/28/2017	\$49.12	(\$1.97)	9,293	28	8,264	(648)	538	(614)	18,125	17,177	(108)	93.3%	527,772	(930)
5/5/2017	\$47.21	(\$1.91)	9,314	21	7,620	(644)	693	155	18,125	16,759	(418)	91.5%	522,525	(5,247)