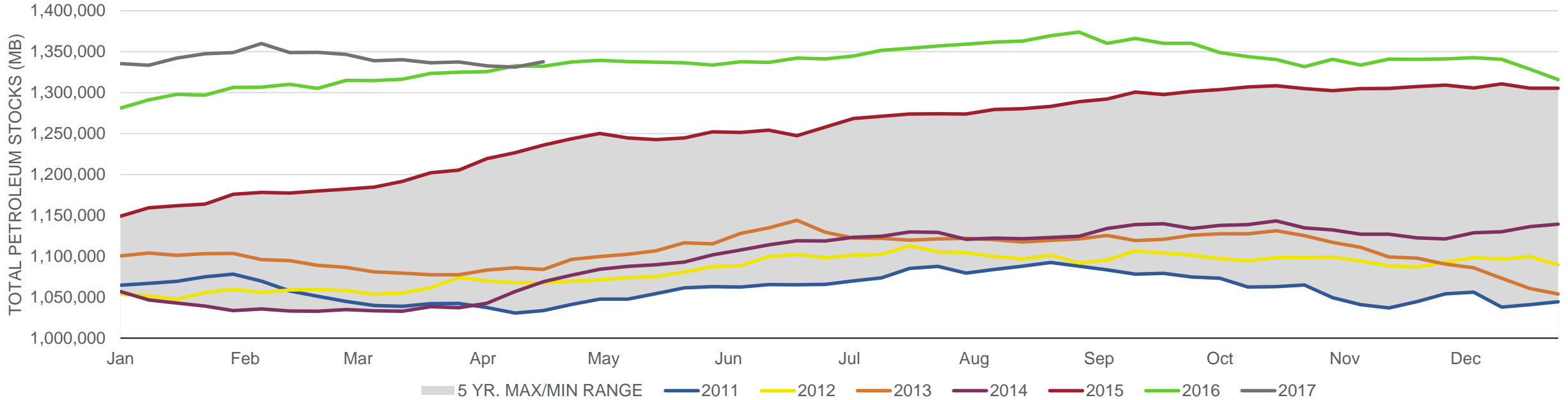
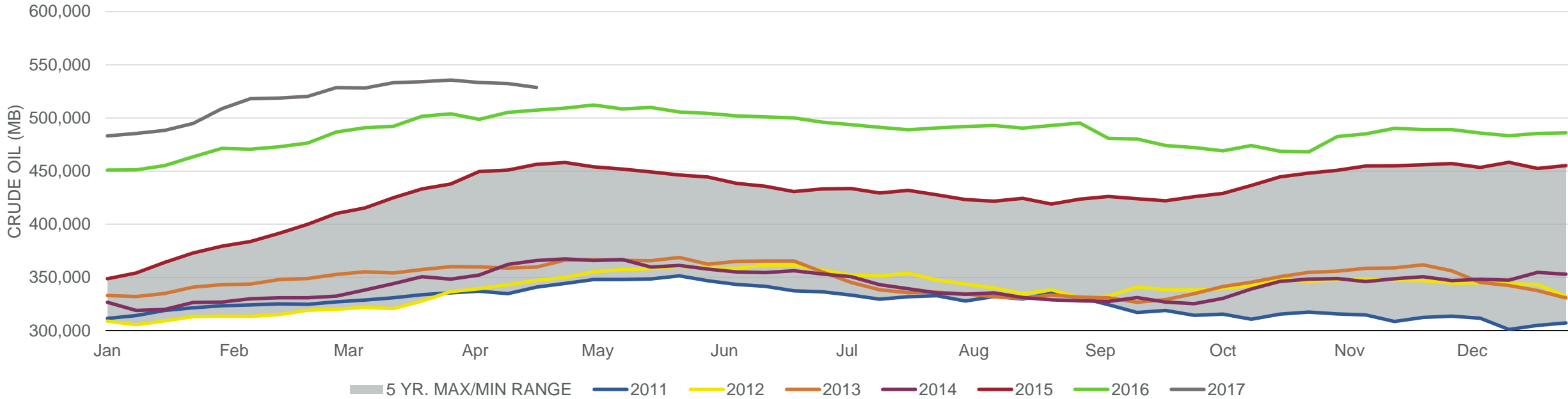


## Total Petroleum Stocks



Week Ending	WTI	Change	GC Gaso	Change	NY No 2	Change	Crude	Change	Gasoline	Change	Distillate	Change	Kero	Change	Resid	Change	Total Stocks	Change
3/24/2017	\$47.49	(\$0.49)	\$1.52	\$0.03	\$1.46	(\$0.01)	533,977	867	239,721	(3,747)	152,910	(2,483)	41,949	120	40,340	767	1,336,401	(3,926)
3/31/2017	\$48.49	\$1.00	\$1.57	\$0.06	\$1.48	\$0.02	535,543	1,566	239,103	(618)	152,374	(536)	42,059	110	39,611	(729)	1,337,442	1,041
4/7/2017	\$50.92	\$2.43	\$1.65	\$0.08	\$1.50	\$0.02	533,377	(2,166)	236,130	(2,973)	150,221	(2,153)	42,524	465	40,145	534	1,332,732	(4,710)
4/14/2017	\$53.00	\$2.08	\$1.68	\$0.03	\$1.59	\$0.08	532,343	(1,034)	237,672	1,542	148,266	(1,955)	42,592	68	38,784	(1,361)	1,331,071	(1,661)
4/21/2017	\$51.09	(\$1.91)	\$1.63	(\$0.05)	\$1.53	(\$0.06)	528,702	(3,641)	241,041	3,369	150,917	2,651	44,179	1,587	39,226	442	1,337,686	6,615

## Commercial Crude Oil Stocks



Week Ending	WTI	Change	Production	Change	Imports	Change	Exports	Change	Capacity	Inputs	Change	Utilization	Crude Oil Stocks	Change
3/24/2017	\$47.49	(\$0.49)	9,147	18	8,224	(83)	1010	460	18,125	16,226	425	89.3%	533,977	867
3/31/2017	\$48.49	\$1.00	9,199	52	7,850	(374)	575	(435)	18,125	16,429	203	90.8%	535,543	1,566
4/7/2017	\$50.92	\$2.43	9,235	36	7,878	28	689	114	18,125	16,697	268	91.0%	533,377	(2,166)
4/14/2017	\$53.00	\$2.08	9,252	17	7,810	(68)	565	(124)	18,125	16,938	241	92.9%	532,343	(1,034)
4/21/2017	\$51.09	(\$1.91)	9,265	13	8,912	1,102	1152	587	18,125	17,285	347	94.1%	528,702	(3,641)