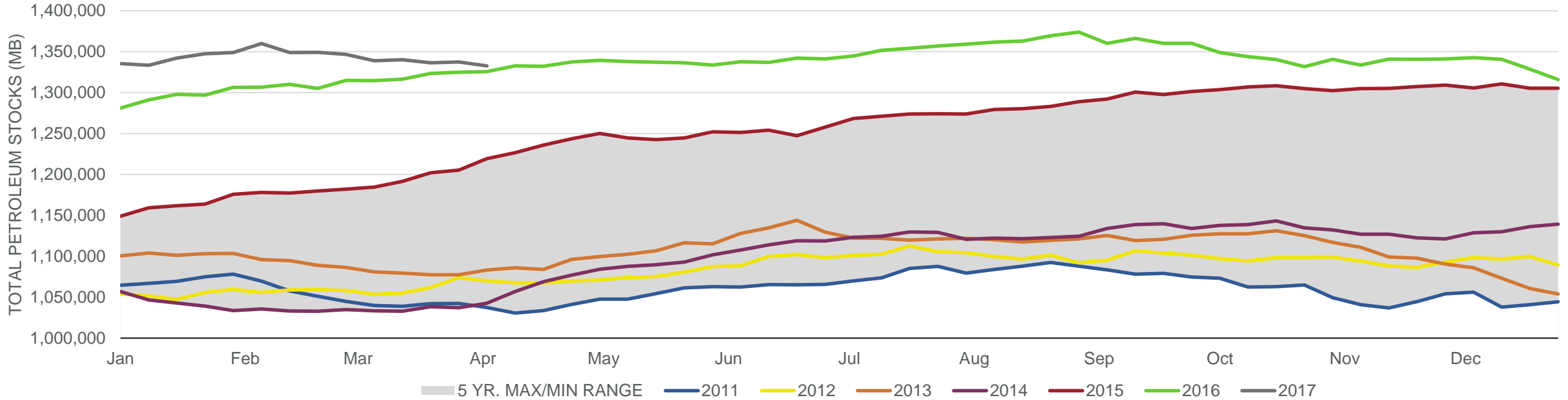
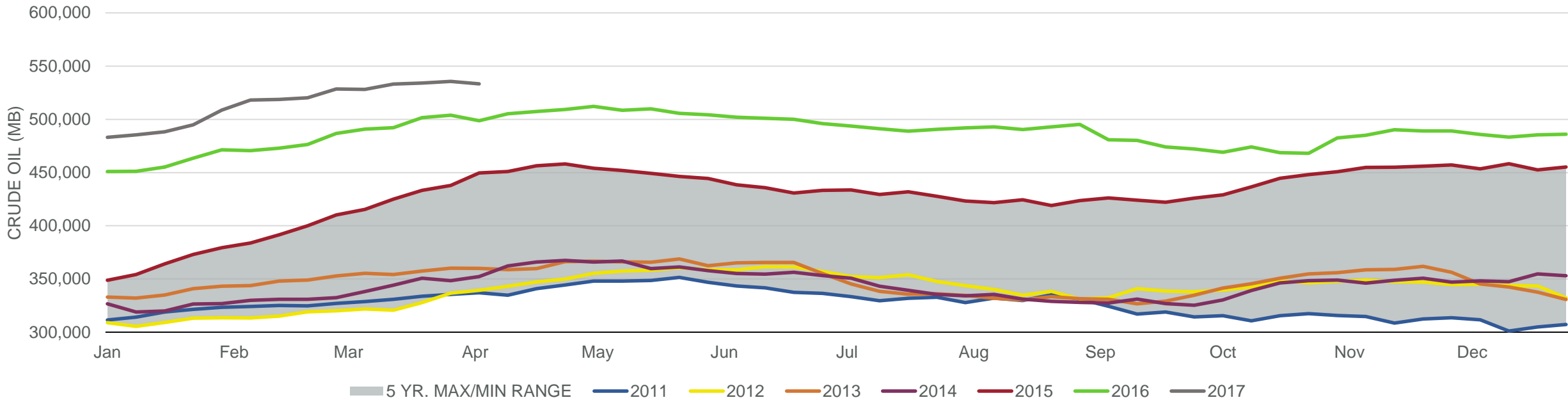


Total Petroleum Stocks



Week Ending	WTI	Change	GC Gaso	Change	NY No 2	Change	Crude	Change	Gasoline	Change	Distillate	Change	Kero	Change	Resid	Change	Total Stocks	Change
3/10/2017	\$50.50	(\$3.06)	\$1.50	(\$0.03)	\$1.52	(\$0.05)	528,156	(237)	246,279	(3,055)	157,303	(4,229)	42,059	(2,120)	39,144	(368)	1,338,993	(7,832)
3/17/2017	\$48.03	(\$2.47)	\$1.49	(\$0.01)	\$1.46	(\$0.06)	533,110	4,954	243,468	(2,811)	155,393	(1,910)	41,829	(230)	39,573	429	1,340,327	1,334
3/24/2017	\$47.28	(\$0.75)	\$1.52	\$0.03	\$1.46	(\$0.01)	533,977	867	239,721	(3,747)	152,910	(2,483)	41,949	120	40,340	767	1,336,401	(3,926)
3/31/2017	\$49.14	\$1.86	\$1.57	\$0.05	\$1.49	\$0.04	535,543	1,566	239,103	(618)	152,374	(536)	42,059	110	39,611	(729)	1,337,442	1,041
4/7/2017	\$51.26	\$2.13	\$1.65	\$0.08	\$1.51	\$0.02	533,377	(2,166)	236,130	(2,973)	150,221	(2,153)	42,524	465	40,145	534	1,332,732	(4,710)

Commercial Crude Oil Stocks



Week Ending	WTI	Change	Production	Change	Imports	Change	Exports	Change	Capacity	Inputs	Change	Utilization	Crude Oil Stocks	Change
3/10/2017	\$50.50	(\$3.06)	9,109	21	7,405	(745)	717	(180)	18,125	15,472	(20)	85.1%	528,156	(237)
3/17/2017	\$48.03	(\$2.47)	9,129	20	8,307	902	550	(167)	18,125	15,801	329	87.4%	533,110	4,954
3/24/2017	\$47.28	(\$0.75)	9,147	18	8,224	(83)	1010	460	18,125	16,226	425	89.3%	533,977	867
3/31/2017	\$49.14	\$1.86	9,199	52	7,850	(374)	575	(435)	18,125	16,429	203	90.8%	535,543	1,566
4/7/2017	\$51.26	\$2.13	9,235	36	7,878	28	689	114	18,125	16,697	268	91.0%	533,377	(2,166)