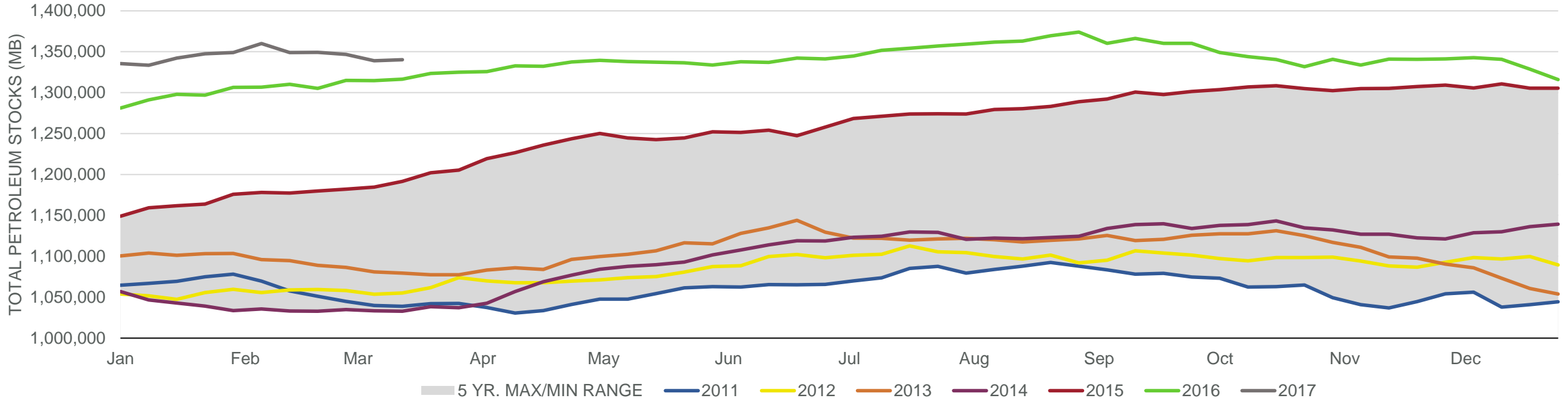
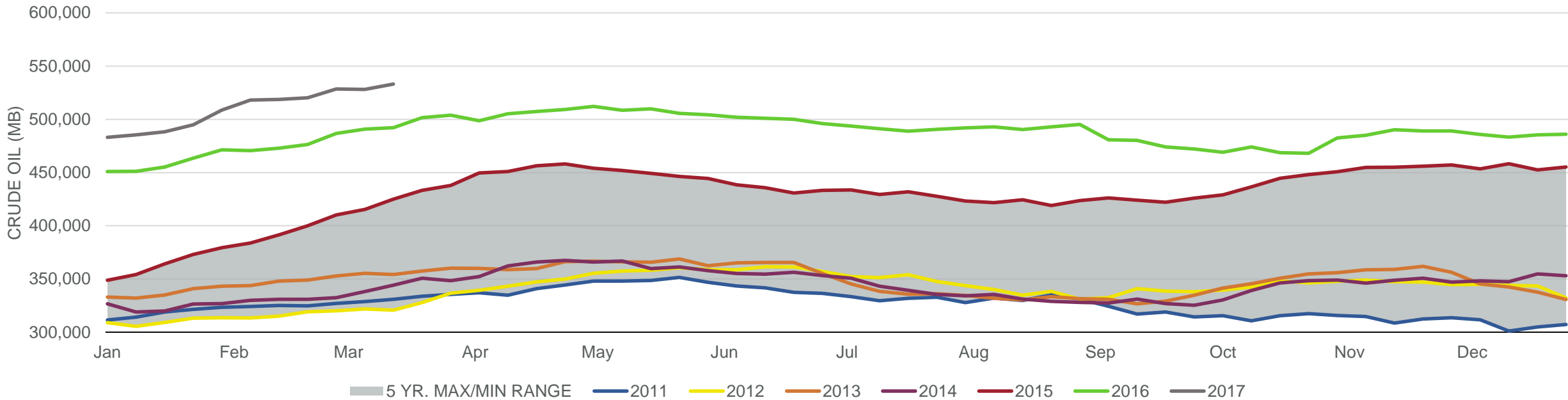


Total Petroleum Stocks



Week Ending	WTI	Change	GC Gaso	Change	NY No 2	Change	Crude	Change	Gasoline	Change	Distillate	Change	Kero	Change	Resid	Change	Total Stocks	Change
2/17/2017	\$52.88	(\$0.45)	\$1.54	(\$0.01)	\$1.55	\$0.00	518,683	564	256,435	(2,628)	165,133	(4,924)	44,282	1,132	37,811	(1,900)	1,348,927	(11,014)
2/24/2017	\$53.22	\$0.34	\$1.54	\$0.01	\$1.57	\$0.02	520,184	1,501	255,889	(546)	164,208	(925)	44,561	279	38,278	467	1,349,207	280
3/3/2017	\$54.03	\$0.80	\$1.53	(\$0.01)	\$1.57	\$0.00	528,393	8,209	249,334	(6,555)	161,532	(2,676)	44,179	(382)	39,512	1,234	1,346,825	(2,382)
3/10/2017	\$53.56	(\$0.46)	\$1.51	(\$0.03)	\$1.52	(\$0.05)	528,156	(237)	246,279	(3,055)	157,303	(4,229)	42,059	(2,120)	39,144	(368)	1,338,993	(7,832)
3/17/2017	\$50.50	(\$3.06)	\$1.48	(\$0.02)	\$1.46	(\$0.06)	533,110	4,954	243,468	(2,811)	155,393	(1,910)	41,829	(230)	39,573	429	1,340,327	1,334

Commercial Crude Oil Stocks



Week Ending	WTI	Change	Production	Change	Imports	Change	Exports	Change	Capacity	Inputs	Change	Utilization	Crude Oil Stocks	Change
2/17/2017	\$52.88	(\$0.45)	9,001	24	7,286	(1,205)	1211	185	18,125	15,271	(187)	84.3%	518,683	564
2/24/2017	\$53.22	\$0.34	9,032	31	7,589	303	721	(490)	18,125	15,664	393	86.0%	520,184	1,501
3/3/2017	\$54.03	\$0.80	9,088	56	8,150	561	897	176	18,125	15,492	(172)	85.9%	528,393	8,209
3/10/2017	\$53.56	(\$0.46)	9,109	21	7,405	(745)	717	(180)	18,125	15,472	(20)	85.1%	528,156	(237)
3/17/2017	\$50.50	(\$3.06)	9,129	20	8,307	902	550	(167)	18,125	15,801	329	87.4%	533,110	4,954