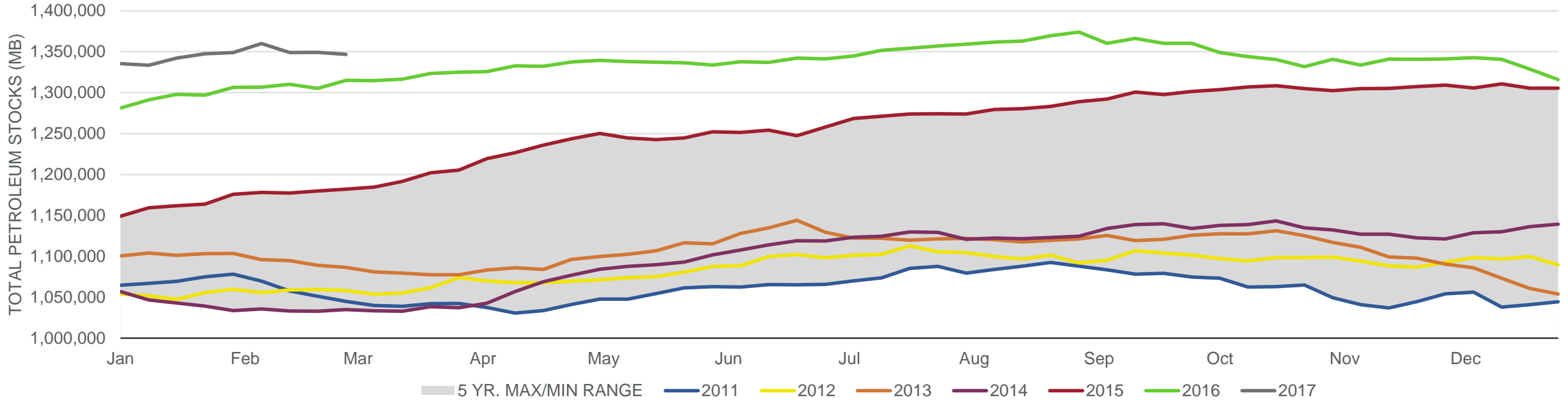
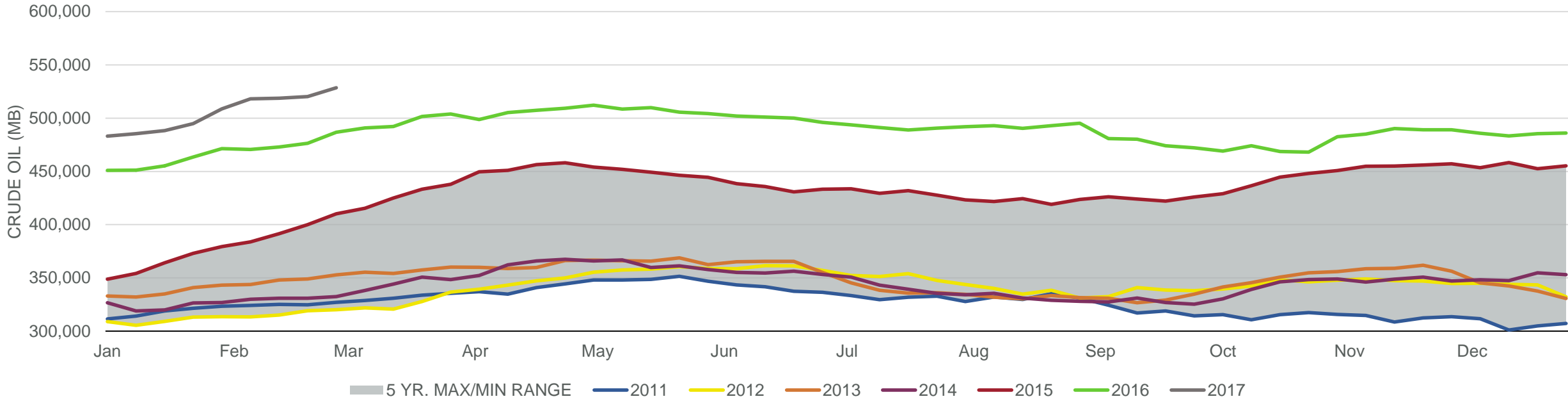


Total Petroleum Stocks



Week Ending	WTI	Change	GC Gaso	Change	NY No 2	Change	Crude	Change	Gasoline	Change	Distillate	Change	Kero	Change	Resid	Change	Total Stocks	Change
2/3/2017	\$53.33	\$0.59	\$1.55	\$0.01	\$1.55	\$0.02	508,592	13,830	256,217	(869)	170,746	29	40,585	(1,917)	41,032	(91)	1,348,887	1,430
2/10/2017	\$52.88	(\$0.45)	\$1.55	(\$0.01)	\$1.55	\$0.00	518,119	9,527	259,063	2,846	170,057	(689)	43,150	2,565	39,711	(1,321)	1,359,941	11,054
2/17/2017	\$53.22	\$0.34	\$1.51	(\$0.03)	\$1.55	(\$0.00)	518,683	564	256,435	(2,628)	165,133	(4,924)	44,282	1,132	37,811	(1,900)	1,348,927	(11,014)
2/24/2017	\$54.03	\$0.80	\$1.52	\$0.01	\$1.57	\$0.03	520,184	1,501	255,889	(546)	164,208	(925)	44,561	279	38,278	467	1,349,207	280
3/3/2017	\$53.56	(\$0.46)	\$1.55	\$0.03	\$1.57	\$0.00	528,393	8,209	249,334	(6,555)	161,532	(2,676)	44,179	(382)	39,512	1,234	1,346,825	(2,382)

Commercial Crude Oil Stocks



Week Ending	WTI	Change	Production	Change	Imports	Change	Exports	Change	Capacity	Inputs	Change	Utilization	Crude Oil Stocks	Change
2/3/2017	\$53.33	\$0.59	8,978	63	9,372	1,082	567	18	18,125	15,893	(54)	87.7%	508,592	13,830
2/10/2017	\$52.88	(\$0.45)	8,977	(1)	8,491	(881)	1026	459	18,125	15,458	(435)	85.4%	518,119	9,527
2/17/2017	\$53.22	\$0.34	9,001	24	7,286	(1,205)	1211	185	18,125	15,271	(187)	84.3%	518,683	564
2/24/2017	\$54.03	\$0.80	9,032	31	7,589	303	721	(490)	18,125	15,664	393	86.0%	520,184	1,501
3/3/2017	\$53.56	(\$0.46)	9,088	56	8,150	561	897	176	18,125	15,492	(172)	85.9%	528,393	8,209