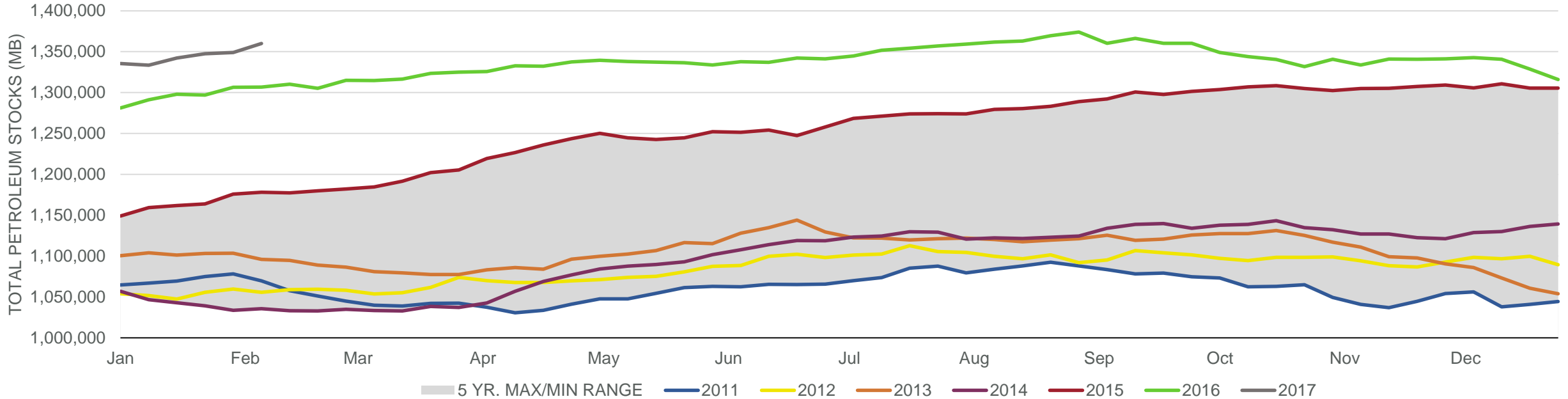
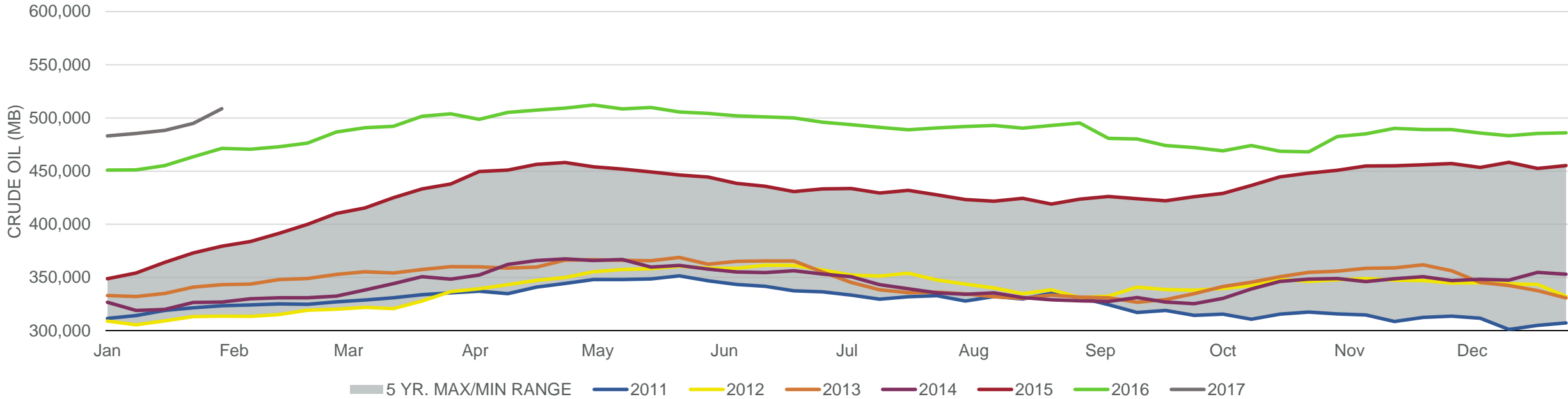


Total Petroleum Stocks



Week Ending	WTI	Change	GC Gaso	Change	NY No 2	Change	Crude	Change	Gaso	Change	Distillate	Change	Kero	Change	Resid	Change	Total Stocks	Change
1/13/2017	\$52.07	(\$1.36)	\$1.61	(\$0.06)	\$1.56	(\$0.04)	485,456	2,347	246,424	5,951	169,073	(968)	43,275	353	39,770	(2,076)	1,333,330	(2,009)
1/20/2017	\$51.82	(\$0.24)	\$1.58	(\$0.04)	\$1.54	(\$0.02)	488,296	2,840	253,220	6,796	169,149	76	44,127	852	41,427	1,657	1,342,194	8,864
1/27/2017	\$52.74	\$0.92	\$1.55	(\$0.03)	\$1.53	(\$0.01)	494,762	6,466	257,086	3,866	170,717	1,568	42,502	(1,625)	41,123	(304)	1,347,457	5,263
2/3/2017	\$53.33	\$0.59	\$1.55	\$0.00	\$1.55	\$0.02	508,592	13,830	256,217	(869)	170,746	29	40,585	(1,917)	41,032	(91)	1,348,887	1,430
2/10/2017	\$52.88	(\$0.45)	\$1.54	(\$0.01)	\$1.55	\$0.00	518,119	9,527	259,063	2,846	170,057	(689)	43,150	2,565	39,711	(1,321)	1,359,941	11,054

Commercial Crude Oil Stocks



Week Ending	WTI	Change	Production	Change	Imports	Change	Exports	Change	Capacity	Inputs	Change	Utilization	Crude Oil Stocks	Change
1/13/2017	\$52.07	(\$1.36)	8,944	(2)	8,378	(674)	704	(23)	18,125	16,468	(639)	90.7%	485,456	2,347
1/20/2017	\$51.82	(\$0.24)	8,961	17	7,810	(568)	599	(105)	18,125	16,047	(421)	88.3%	488,296	2,840
1/27/2017	\$52.74	\$0.92	8,915	(46)	8,290	480	549	(50)	18,125	15,947	(100)	88.2%	494,762	6,466
2/3/2017	\$53.33	\$0.59	8,978	63	9,372	1,082	567	18	18,125	15,893	(54)	87.7%	508,592	13,830
2/10/2017	\$52.88	(\$0.45)	8,977	(1)	8,491	(881)	1026	459	18,125	15,458	(435)	85.4%	518,119	9,527