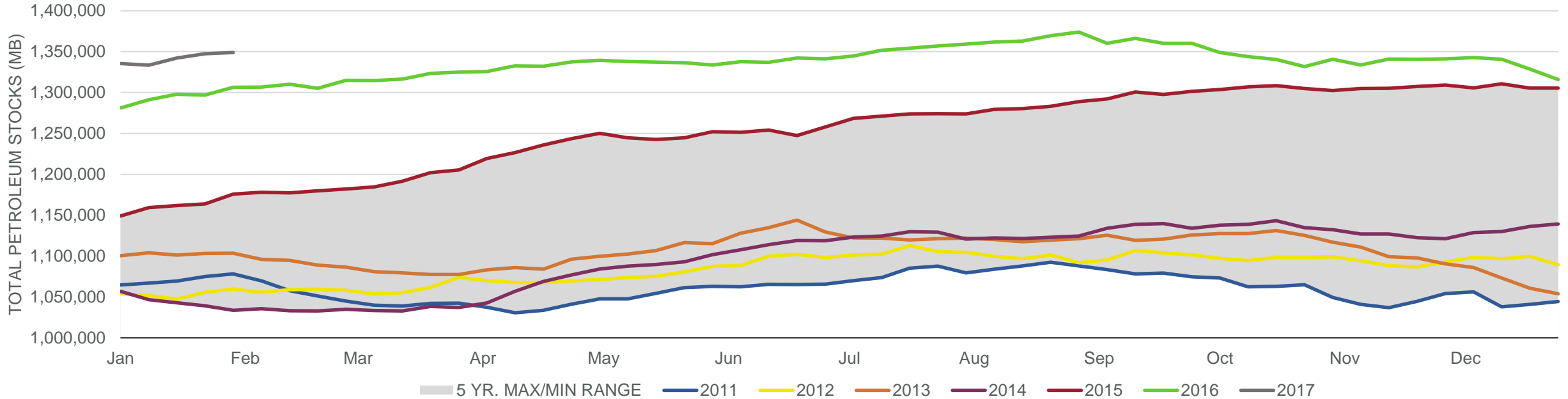
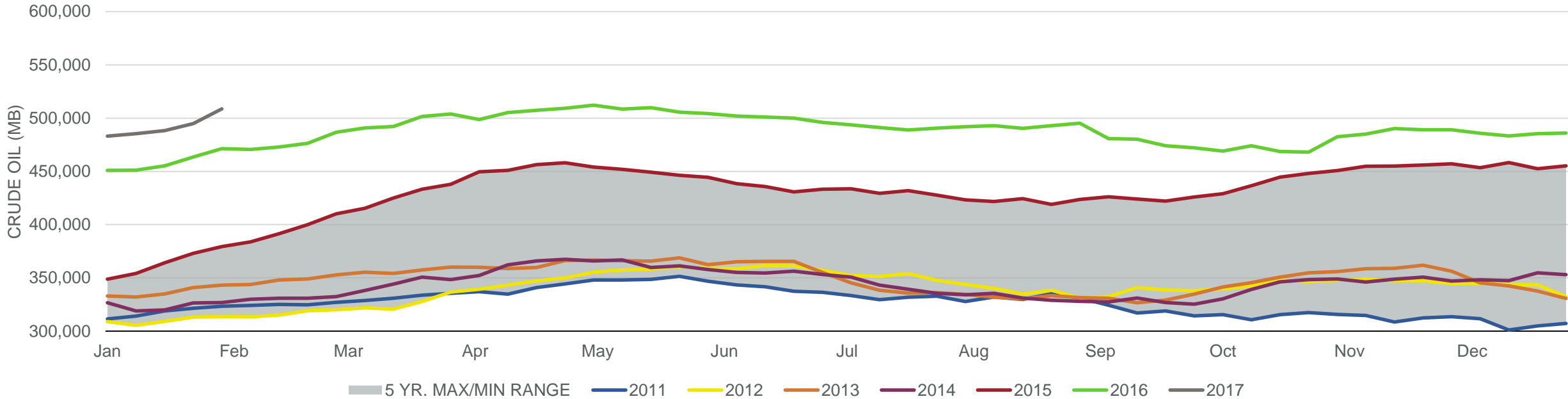


## Total Petroleum Stocks



Week Ending	WTI	Change	GC Gaso	Change	NY No 2	Change	Crude	Change	Gaso	Change	Distillate	Change	Kero	Change	Resid	Change	Total Stocks	Change
1/6/2017	\$53.42	\$0.50	\$1.67	\$0.02	\$1.60	\$0.03	483,109	4,097	240,473	5,023	170,041	8,356	42,922	(71)	41,846	(627)	1,335,339	13,436
1/13/2017	\$52.07	(\$1.36)	\$1.61	(\$0.06)	\$1.56	(\$0.04)	485,456	2,347	246,424	5,951	169,073	(968)	43,275	353	39,770	(2,076)	1,333,330	(2,009)
1/20/2017	\$51.82	(\$0.24)	\$1.58	(\$0.04)	\$1.54	(\$0.02)	488,296	2,840	253,220	6,796	169,149	76	44,127	852	41,427	1,657	1,342,194	8,864
1/27/2017	\$52.74	\$0.92	\$1.55	(\$0.03)	\$1.53	(\$0.01)	494,762	6,466	257,086	3,866	170,717	1,568	42,502	(1,625)	41,123	(304)	1,347,457	5,263
2/3/2017	\$53.33	\$0.59	\$1.55	(\$0.00)	\$1.55	\$0.02	508,592	13,830	256,217	(869)	170,746	29	40,585	(1,917)	41,032	(91)	1,348,887	1,430

## Commercial Crude Oil Stocks



Week Ending	WTI	Change	Production	Change	Imports	Change	Exports	Change	Capacity	Inputs	Change	Utilization	Crude Oil Stocks	Change
1/6/2017	\$53.42	\$0.50	8,946	176	9,052	1,869	727	41	18,125	17,107	418	93.6%	483,109	4,097
1/13/2017	\$52.07	(\$1.36)	8,944	(2)	8,378	(674)	704	(23)	18,125	16,468	(639)	90.7%	485,456	2,347
1/20/2017	\$51.82	(\$0.24)	8,961	17	7,810	(568)	599	(105)	18,125	16,047	(421)	88.3%	488,296	2,840
1/27/2017	\$52.74	\$0.92	8,915	(46)	8,290	480	549	(50)	18,125	15,947	(100)	88.2%	494,762	6,466
2/3/2017	\$53.33	\$0.59	8,978	63	9,372	1,082	567	18	18,125	15,893	(54)	87.7%	508,592	13,830