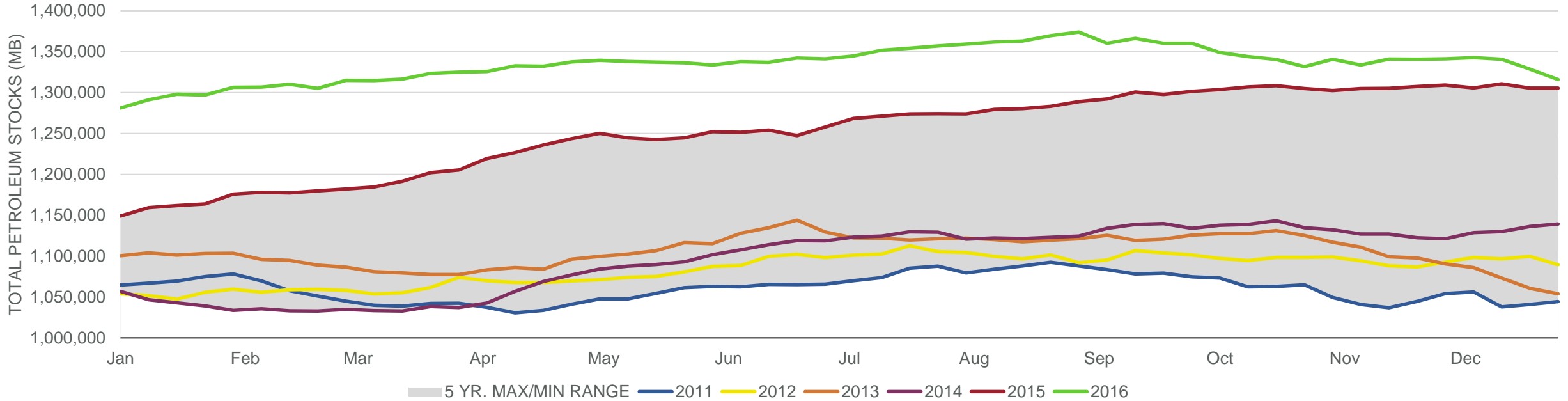
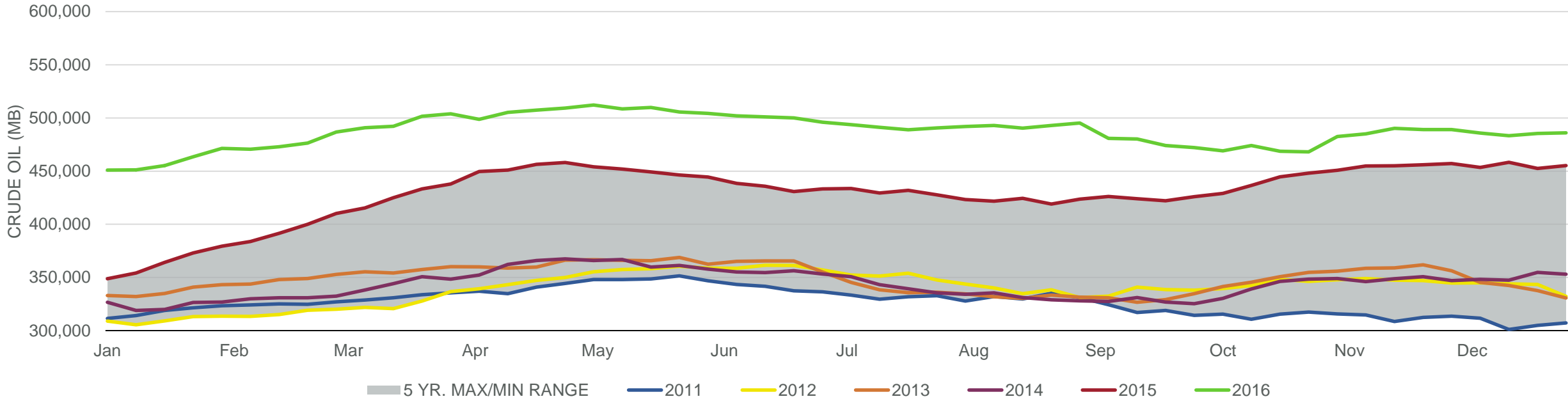


Total Petroleum Stocks



Week Ending	WTI	Change	GC Gaso	Change	NY No 2	Change	Crude	Change	Gaso	Change	Distillate	Change	Kero	Change	Resid	Change	Total Stocks	Change
12/2/2016	\$47.63	\$0.64	\$1.40	\$0.09	\$1.45	\$0.04	485,756	(2,389)	229,548	3,425	156,697	2,501	43,818	1,545	40,438	171	1,342,634	1,408
12/9/2016	\$51.01	\$3.38	\$1.49	\$0.10	\$1.52	\$0.07	483,193	(2,563)	230,045	497	155,935	(762)	44,276	458	41,937	1,499	1,340,654	(1,980)
12/16/2016	\$51.83	\$0.82	\$1.51	\$0.01	\$1.54	\$0.02	485,449	2,256	228,736	(1,309)	153,515	(2,420)	43,368	(908)	41,461	(476)	1,328,723	(11,931)
12/23/2016	\$51.94	\$0.11	\$1.56	\$0.06	\$1.55	\$0.01	486,063	614	227,143	(1,593)	151,634	(1,881)	42,017	(1,351)	42,210	749	1,315,821	(12,902)
12/30/2016	\$53.28	\$1.34	\$1.67	\$0.10	\$1.60	\$0.06	479,012	(7,051)	235,450	8,307	161,685	10,051	42,993	976	42,473	263	1,321,903	6,082

Commercial Crude Oil Stocks



Week Ending	WTI	Change	Production	Change	Imports	Change	Exports	Change	Capacity	Inputs	Change	Utilization	Crude Oil Stocks	Change
12/2/2016	\$47.63	\$0.64	8,697	(2)	8,303	755	499	25	18,125	16,417	134	90.4%	485,756	(2,389)
12/9/2016	\$51.01	\$3.38	8,796	99	7,360	(943)	485	(14)	18,125	16,474	57	90.5%	483,193	(2,563)
12/16/2016	\$51.83	\$0.82	8,786	(10)	8,471	1,111	557	72	18,125	16,658	184	91.5%	485,449	2,256
12/23/2016	\$51.94	\$0.11	8,766	(20)	8,167	(304)	627	70	18,125	16,557	(101)	91.0%	486,063	614
12/30/2016	\$53.28	\$1.34	8,770	4	7,183	(984)	686	59	18,125	16,689	132	92.0%	479,012	(7,051)