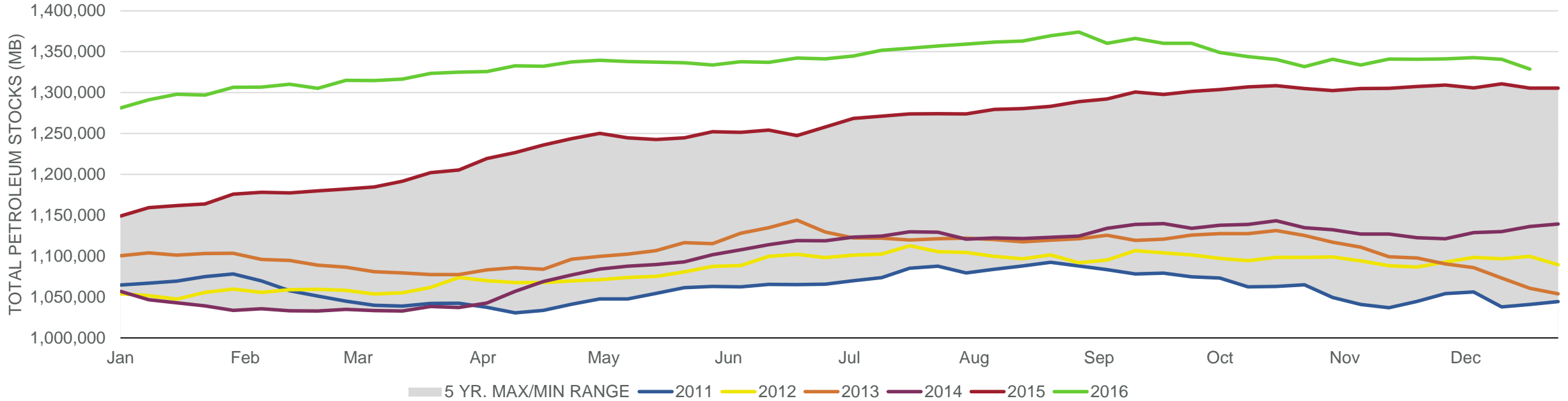
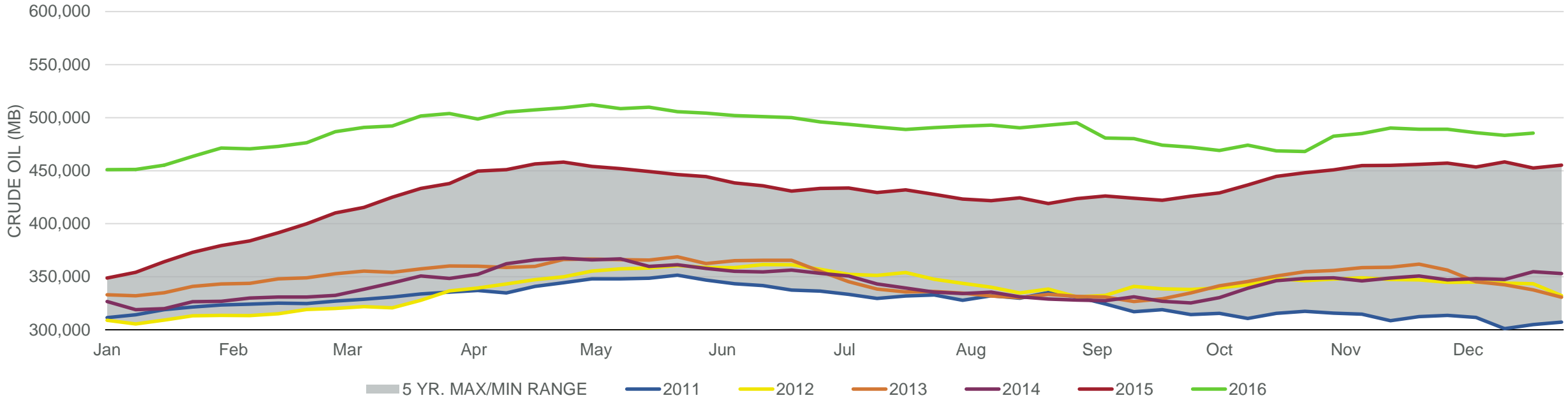


Total Petroleum Stocks



Week Ending	WTI	Change	GC Gaso	Change	NY No 2	Change	Crude	Change	Gasoline	Change	Distillate	Change	Kero	Change	Resid	Change	Total Stocks	Change
11/18/2016	\$45.15	\$0.54	\$1.23	(\$0.04)	\$1.35	\$0.01	489,029	(1,255)	224,026	2,317	149,239	327	41,693	(1,155)	40,321	(878)	1,340,760	(98)
11/25/2016	\$47.14	\$1.99	\$1.35	\$0.12	\$1.44	\$0.09	488,145	(884)	226,123	2,097	154,196	4,957	42,273	580	40,267	(54)	1,341,226	466
12/2/2016	\$48.63	\$1.49	\$1.42	\$0.07	\$1.48	\$0.03	485,756	(2,389)	229,548	3,425	156,697	2,501	43,818	1,545	40,438	171	1,342,634	1,408
12/9/2016	\$50.97	\$2.35	\$1.49	\$0.07	\$1.51	\$0.03	483,193	(2,563)	230,045	497	155,935	(762)	44,276	458	41,937	1,499	1,340,654	(1,980)
12/16/2016	\$51.91	\$0.94	\$1.51	\$0.01	\$1.55	\$0.04	485,449	2,256	228,736	(1,309)	153,515	(2,420)	43,368	(908)	41,461	(476)	1,328,723	(11,931)

Commercial Crude Oil Stocks



Week Ending	WTI	Change	Production	Change	Imports	Change	Exports	Change	Capacity	Inputs	Change	Utilization	Crude Oil Stocks	Change
11/18/2016	\$45.15	\$0.54	8,690	9	7,578	(845)	469	(12)	18,125	16,397	271	90.8%	489,029	(1,255)
11/25/2016	\$47.14	\$1.99	8,699	9	7,548	(30)	474	5	18,125	16,283	(114)	89.8%	488,145	(884)
12/2/2016	\$48.63	\$1.49	8,697	(2)	8,303	755	499	25	18,125	16,417	134	90.4%	485,756	(2,389)
12/9/2016	\$50.97	\$2.35	8,796	99	7,360	(943)	485	(14)	18,125	16,474	57	90.5%	483,193	(2,563)
12/16/2016	\$51.91	\$0.94	8,786	(10)	8,471	1,111	557	72	18,125	16,658	184	91.5%	485,449	2,256