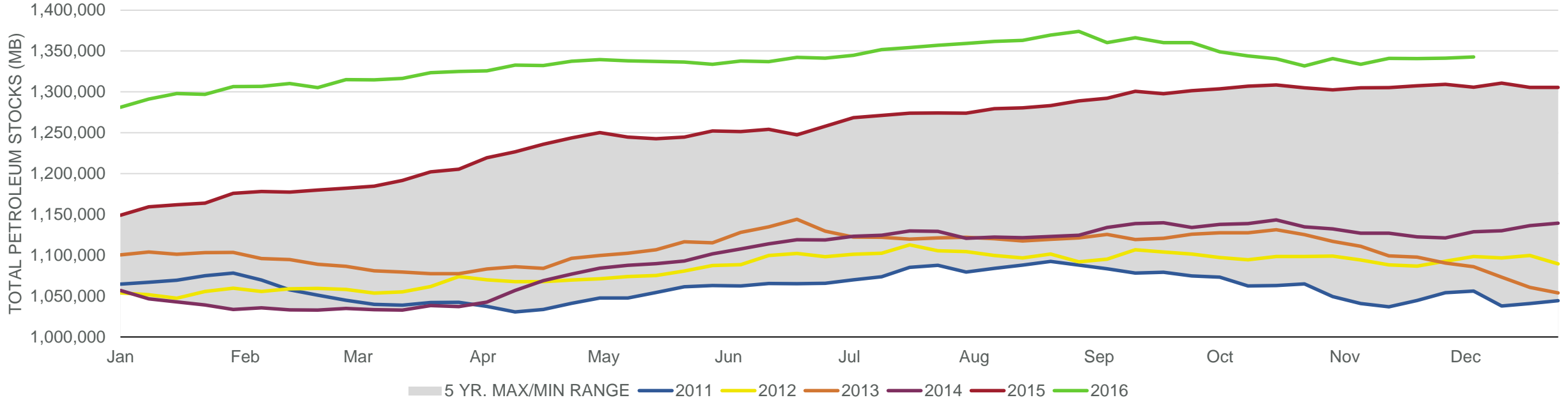


Total Petroleum Stocks



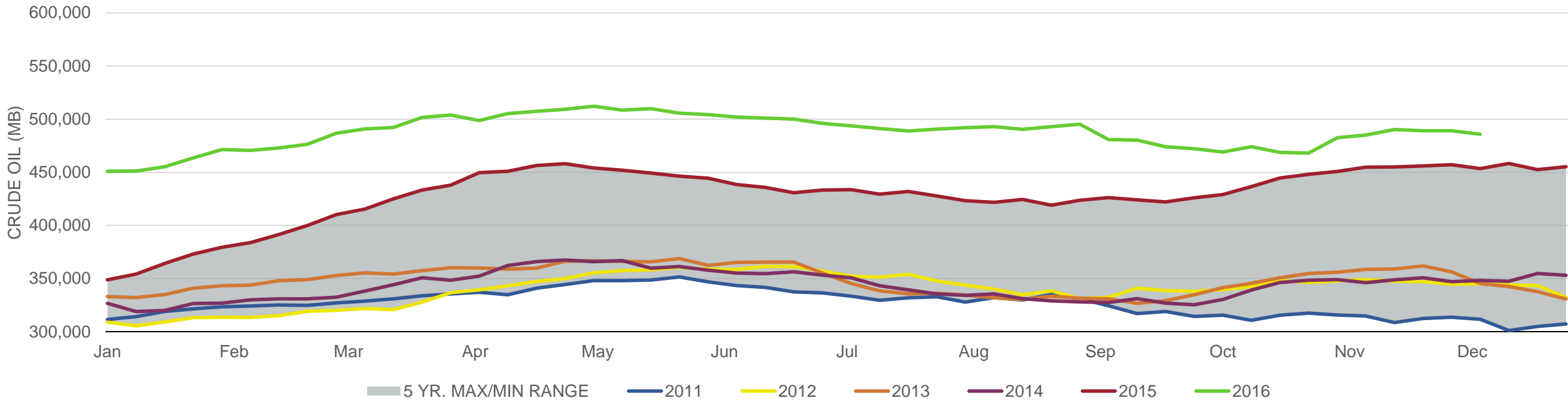
Week Ending	WTI	Change	GC Gaso	Change	NY No 2	Change	Crude	Change	Gasoline	Change	Distillate	Change	Kero	Change	Resid	Change	Total Stocks	Change
11/4/2016	\$45.51	(\$3.85)	\$1.42	(\$0.05)	\$1.42	(\$0.06)	485,010	2,432	220,963	(2,841)	148,602	(1,948)	41,924	(498)	39,170	(631)	1,333,766	(6,965)
11/11/2016	\$44.61	(\$0.90)	\$1.30	(\$0.12)	\$1.35	(\$0.07)	490,284	5,274	221,709	746	148,912	310	42,848	924	41,199	2,029	1,340,858	7,092
11/18/2016	\$45.15	\$0.54	\$1.21	(\$0.09)	\$1.34	(\$0.02)	489,029	(1,255)	224,026	2,317	149,239	327	41,693	(1,155)	40,321	(878)	1,340,760	(98)
11/25/2016	\$47.25	\$2.09	\$1.31	\$0.10	\$1.43	\$0.10	488,145	(884)	226,123	2,097	154,196	4,957	42,273	580	40,267	(54)	1,341,226	466
12/2/2016	\$48.63	\$1.38	\$1.40	\$0.09	\$1.48	\$0.04	485,756	(2,389)	229,548	3,425	156,697	2,501	43,818	1,545	40,438	171	1,342,634	1,408

EIA Weekly Petroleum Status Report

Week Ending: 12/2/2016

Total Stocks: **1,408 Mb** Crude Oil Stocks (excl. SPR): **-2,389Mb** Production: **-2 Mb/d**

Commercial Crude Oil Stocks



Week Ending	WTI	Change	Production	Change	Imports	Change	Exports	Change	Capacity	Inputs	Change	Utilization	Crude Oil Stocks	Change
11/4/2016	\$45.51	(\$3.85)	8,692	170	7,442	(1,553)	410	6	18,125	15,817	369	87.1%	485,010	2,432
11/11/2016	\$44.61	(\$0.90)	8,681	(11)	8,423	981	481	71	18,125	16,126	309	89.2%	490,284	5,274
11/18/2016	\$45.15	\$0.54	8,690	9	7,578	(845)	469	(12)	18,125	16,397	271	90.8%	489,029	(1,255)
11/25/2016	\$47.25	\$2.09	8,699	9	7,548	(30)	474	5	18,125	16,283	(114)	89.8%	488,145	(884)
12/2/2016	\$48.63	\$1.38	8,697	(2)	8,303	755	499	25	18,125	16,417	134	90.4%	485,756	(2,389)